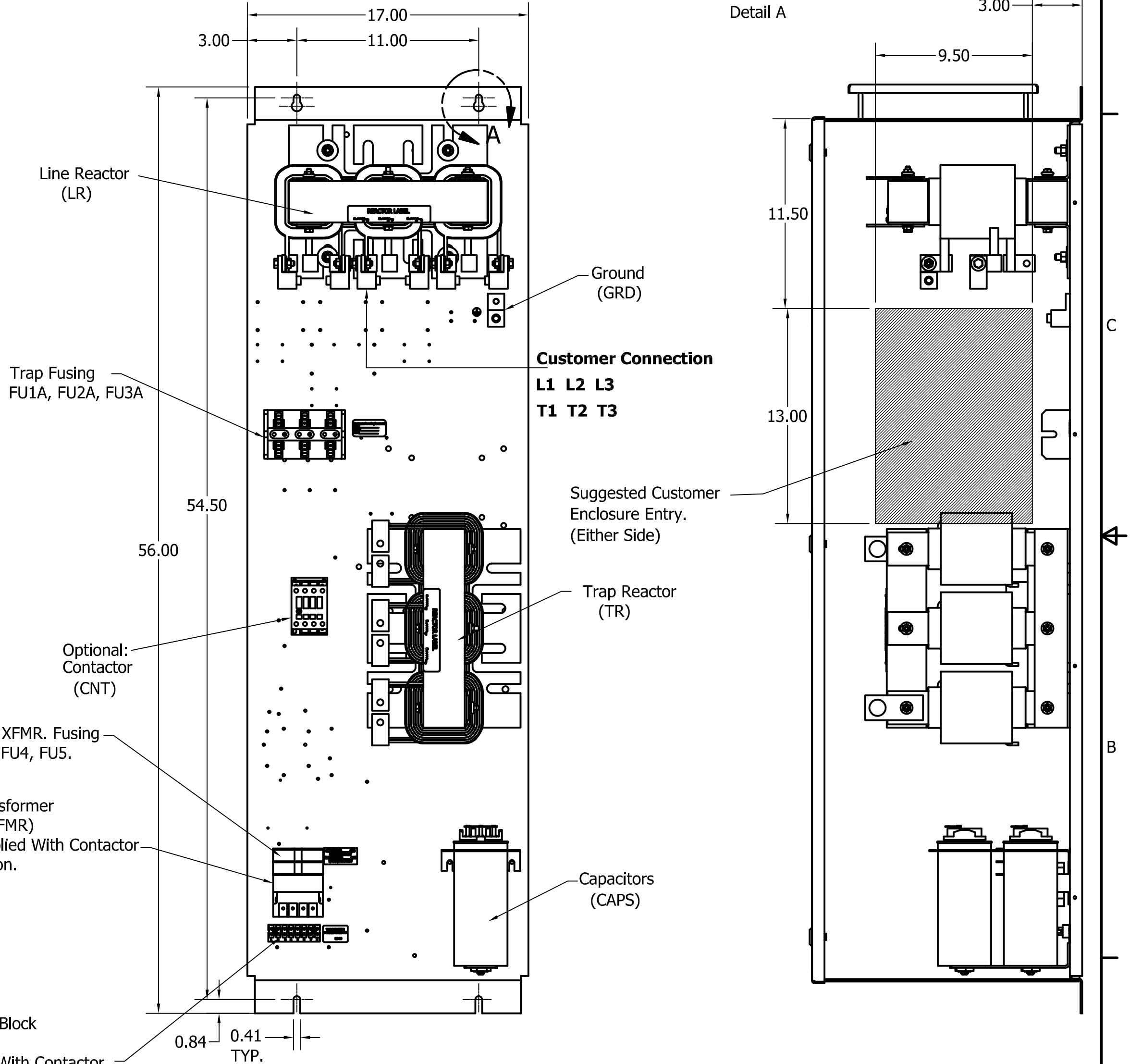
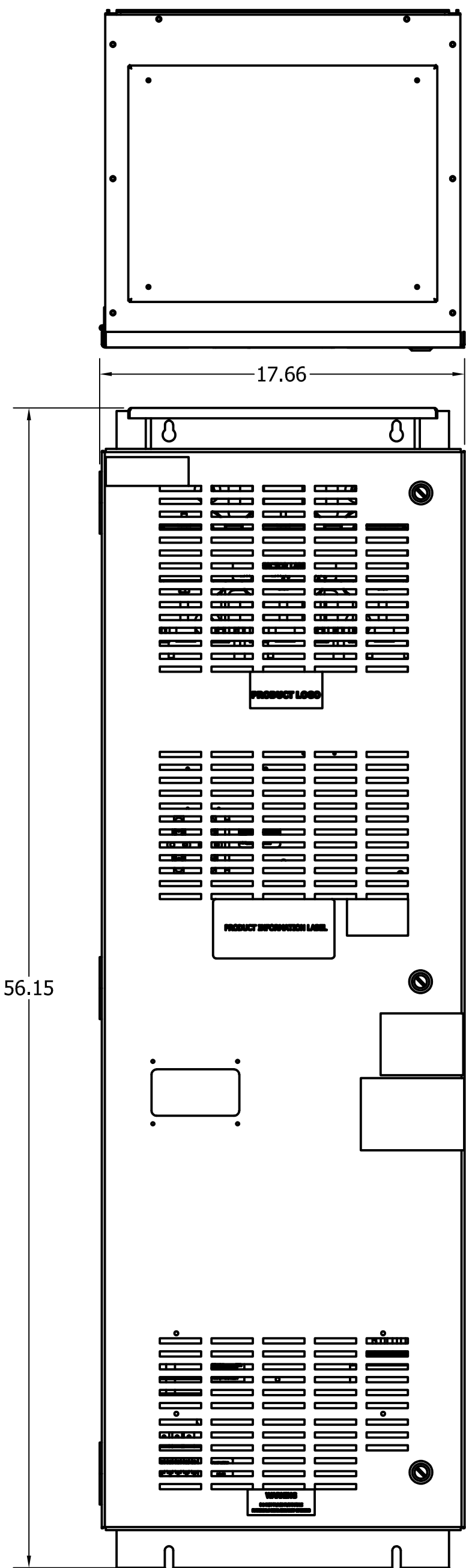
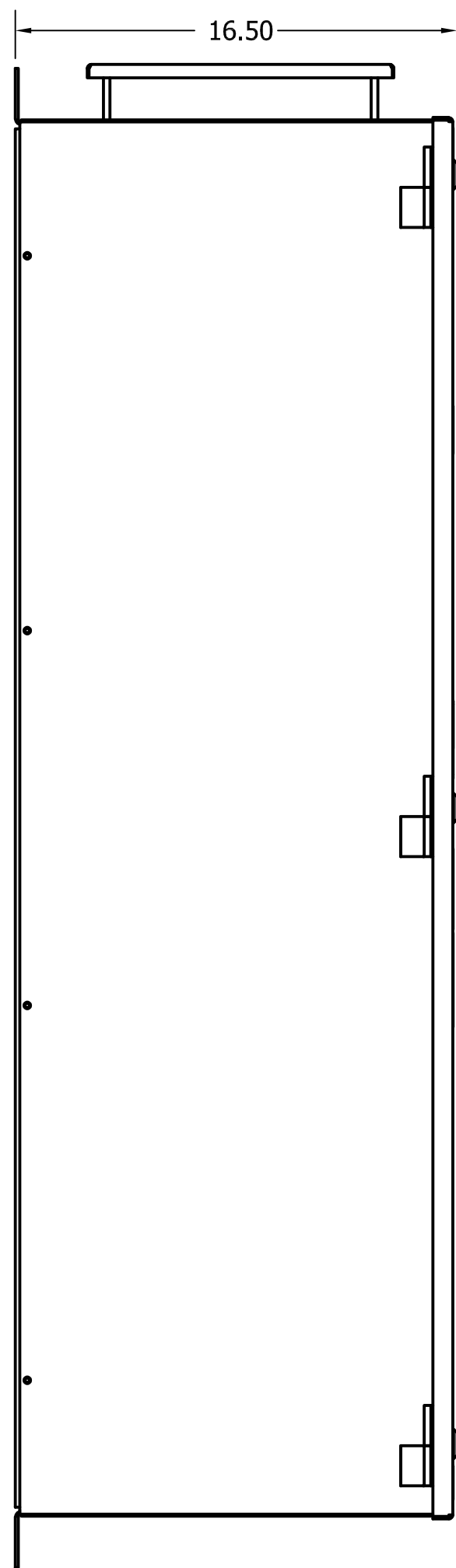
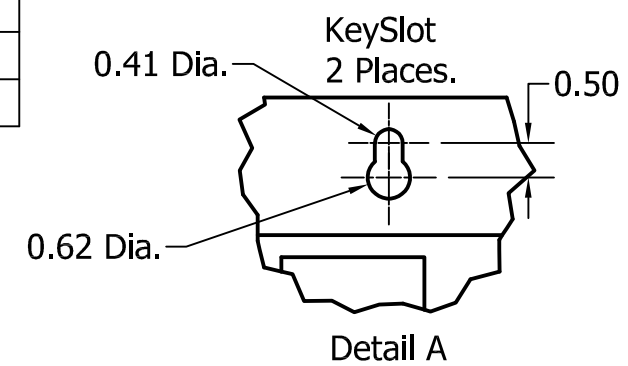


Unit Specifications					
kVar	Harmonic	Volt	HZ.	Phase	HP
20	5TH	600	60	3	125

TCI Part Number	Option	Weight	Schematic
HGL0125CW1S0000	Standard	315lbs	30807-1
HGL0125CW1C0000	Contactor	320lbs	30807

See IOM Manual For Wire Range  
And Tightening Torque.



CUSTOMER IS RESPONSIBLE FOR INSTALLATION  
TO MEET ALL NATIONAL AND LOCAL ELETRICAL CODES.

Material(s) Shall be RoHS Compliant

TCI, LLC CLAIMS PROPRIETARY RIGHTS IN THE MATERIAL HEREIN DISCLOSED. IT IS SUPPLIED WITHOUT PREDJUDICE TO ANY PATENT RIGHTS OF TCI AND MAY NOT BE REPRODUCED OR USED TO MANUFACTURE ANYTHING SHOWN THEREIN WITHOUT WRITTEN PERMISSION FROM TCI.

NO	REVISION	DATE	BY	TOLERANCES (EXCEPT AS NOTED)
				DECIMAL
				.XX +/- .25
				.XXX +/- .12
				FRACTIONAL
				+/- 1/16
				ANGULAR
				+/- 1°

**TCI** W132 N10611 GRANT DRIVE  
GERMANTOWN, WI 53022

HGL0125CW1C0000, 600V, 125HP, 3 Phase  
HGL0125CW1S0000, 600V, 125HP, 3 Phase  
60 Hz, Type 1, Low C, Passive Harmonic Filter

DRN. BY: DSW DATE: 10/4/17 DWG. No.: 107289DG  
SCALE: 1/8 APRVD.

SHEET 1 OF 1