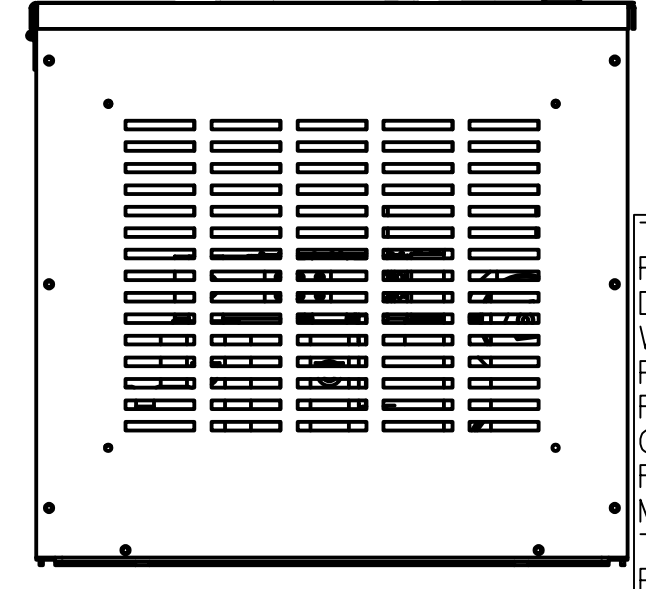
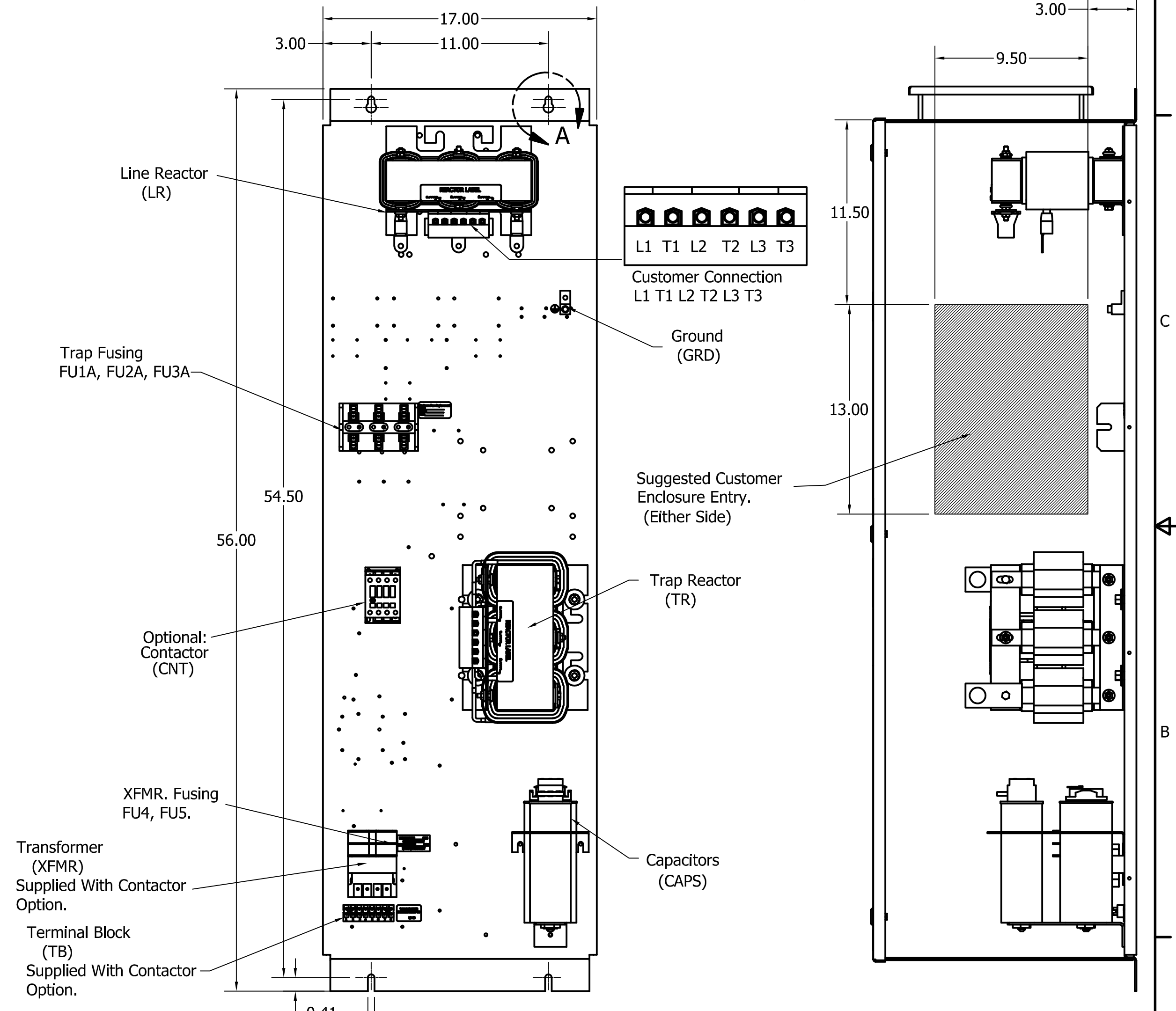
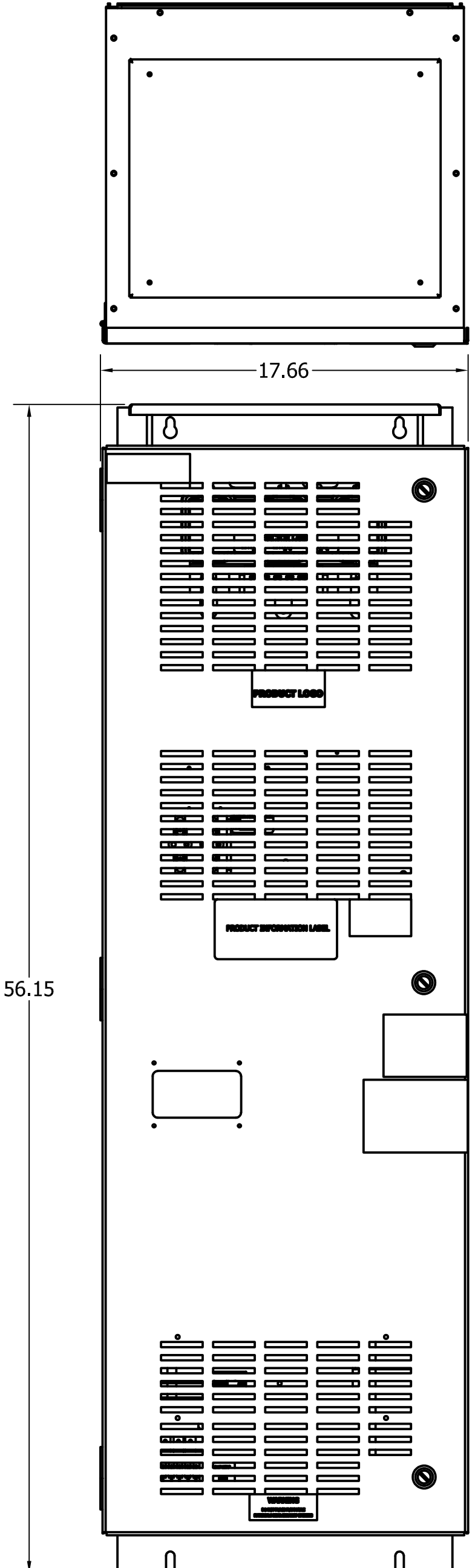
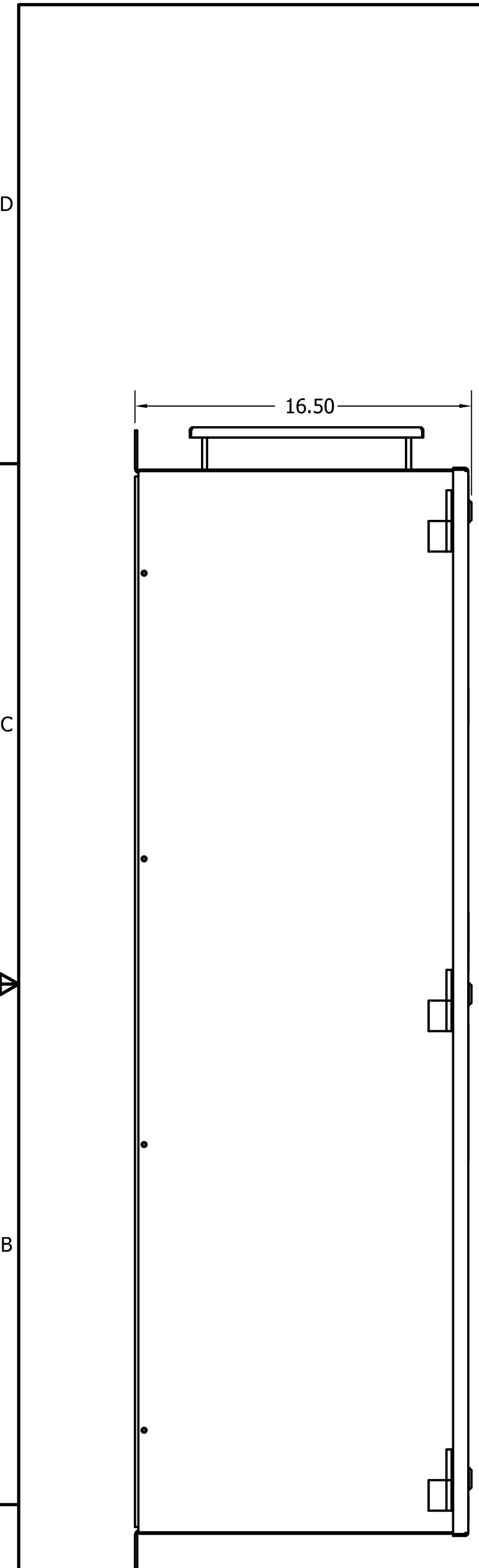
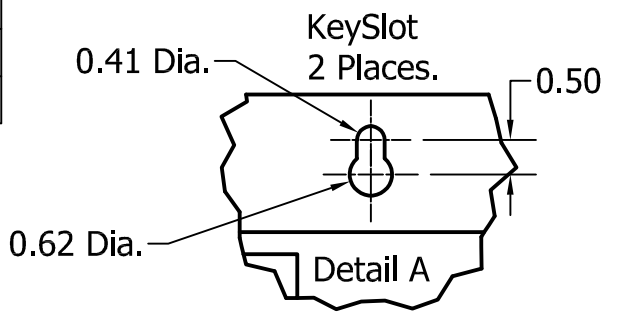


4 3 2 1

Unit Specifications					
kVar	Harmonic	Volt	HZ.	Phase	HP
15	5TH	600	60	3	75

TCI Part Number	Option	Weight	Schematic
HGL0075CW1S0000	Standard	275lbs	30807-1
HGL0075CW1C0000	Contactor	280lbs	30807

See IOM Manual For Wire Range
And Tightening Torque.



CUSTOMER IS RESPONSIBLE FOR INSTALLATION TO MEET ALL NATIONAL AND LOCAL ELETRICAL CODES.

Material(s) Shall be RoHS Compliant

TCI, LLC CLAIMS PROPRIETARY RIGHTS IN THE MATERIAL HEREIN DISCLOSED. IT IS SUPPLIED WITHOUT PREDJUDICE TO ANY PATENT RIGHTS OF TCI AND MAY NOT BE REPRODUCED OR USED TO MANUFACTURE ANYTHING SHOWN THEREIN WITHOUT WRITTEN PERMISSION FROM TCI.

NO	REVISION	DATE	BY	TOLERANCES (EXCEPT AS NOTED)
A	AS DESIGNED	10/3/17	DSW	DECIMAL .XX +/- .25 .XXX +/- .12 FRACTIONAL +/- 1/16 ANGULAR +/- 1°

TCI W132 N10611 GRANT DRIVE GERMANTOWN, WI 53022

HGL0075CW1C0000, 600V, 75HP, 3 Phase
HGL0075CW1S0000, 600V, 75HP, 3 Phase
60 Hz, Type 1, Low C, Passive Harmonic Filter

DRN. BY: DSW DATE: 10/3/17 DWG. No.: 107287DG
SCALE: 1/8 APRVD.

SHEET 1 OF 1

4 3 2 1