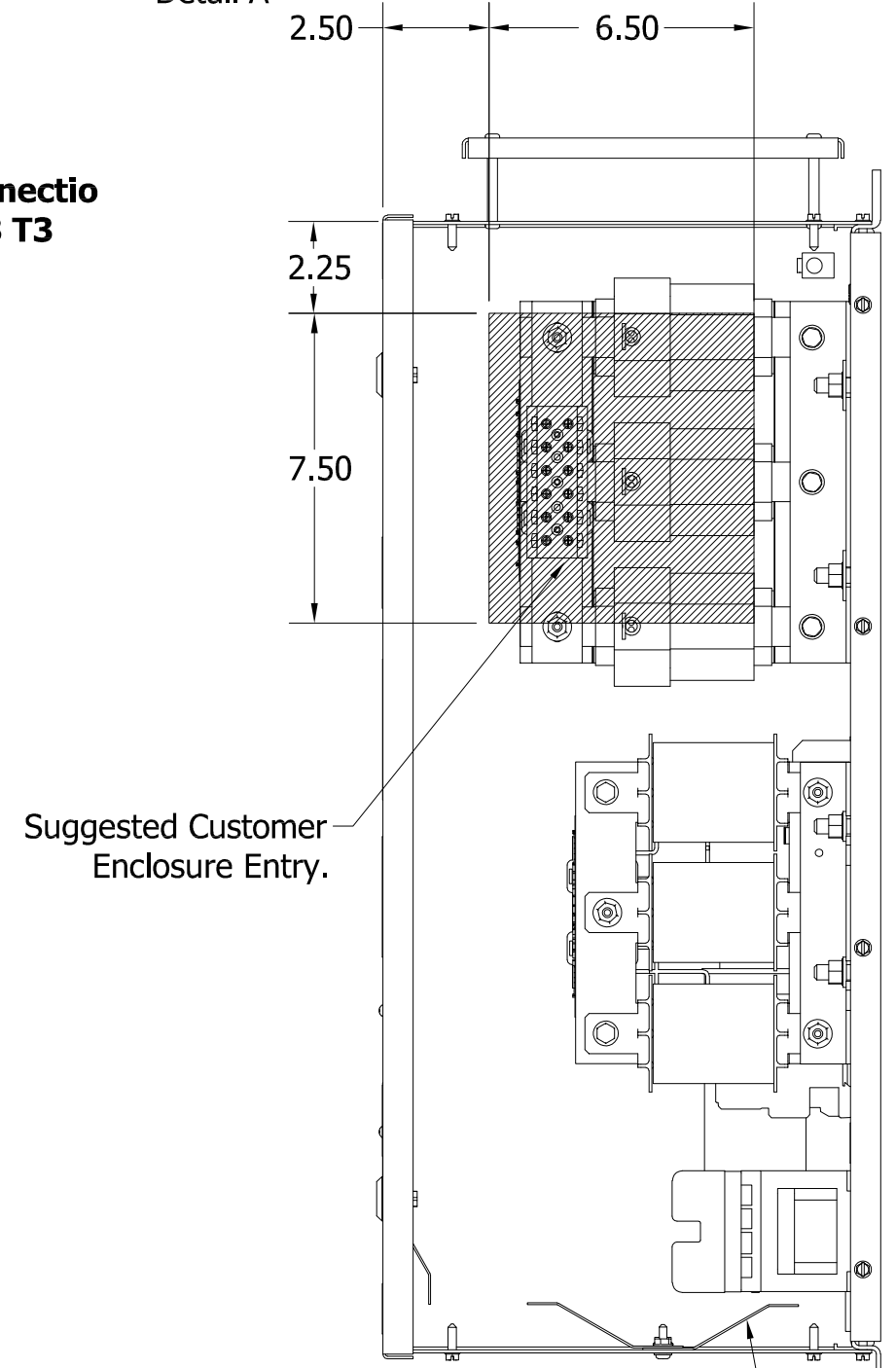
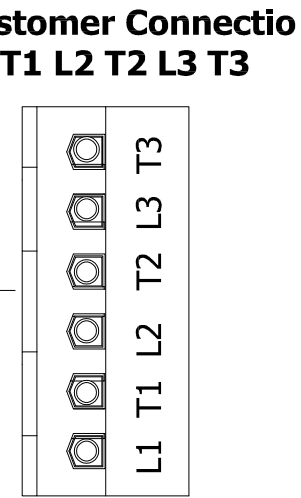
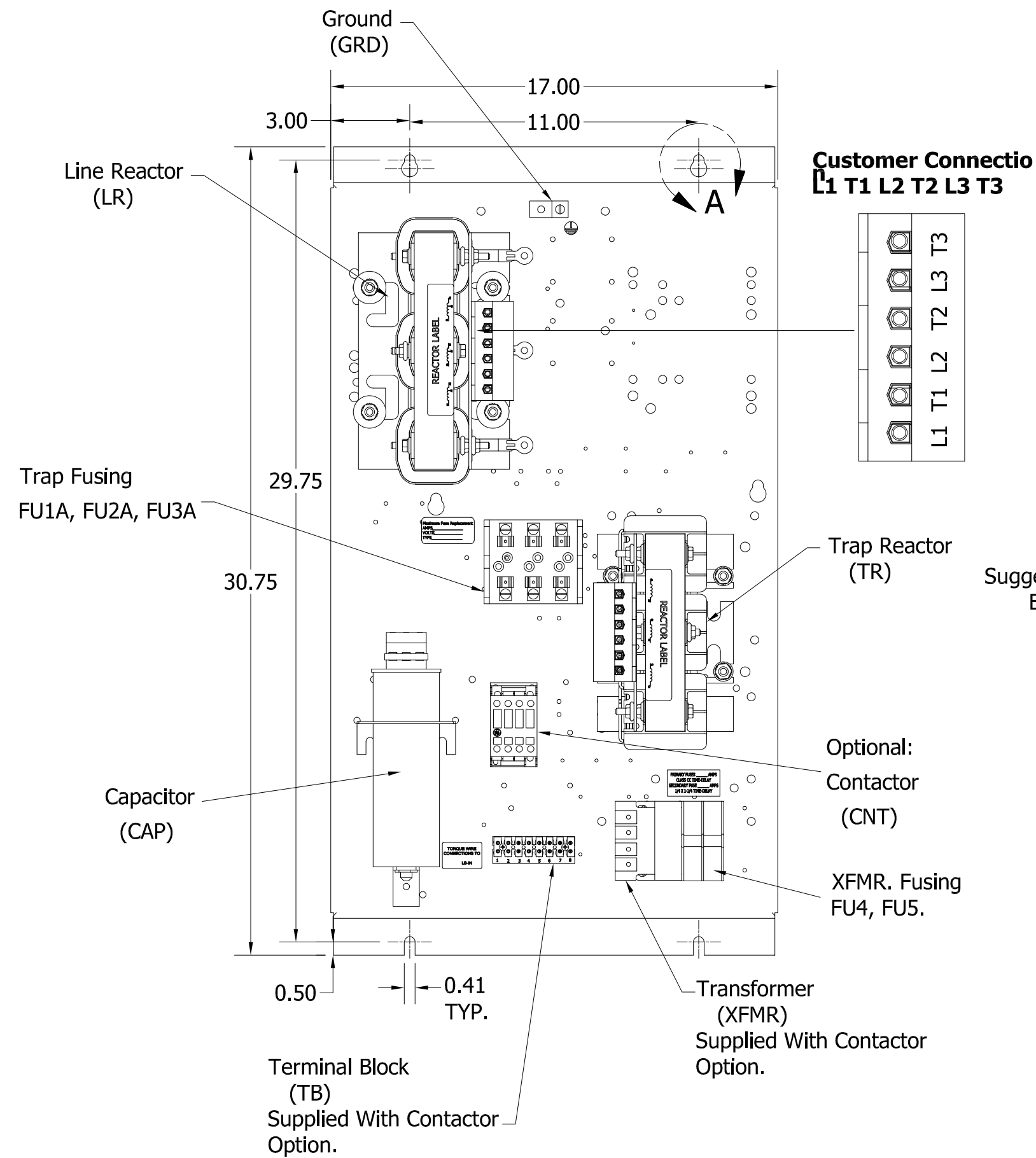
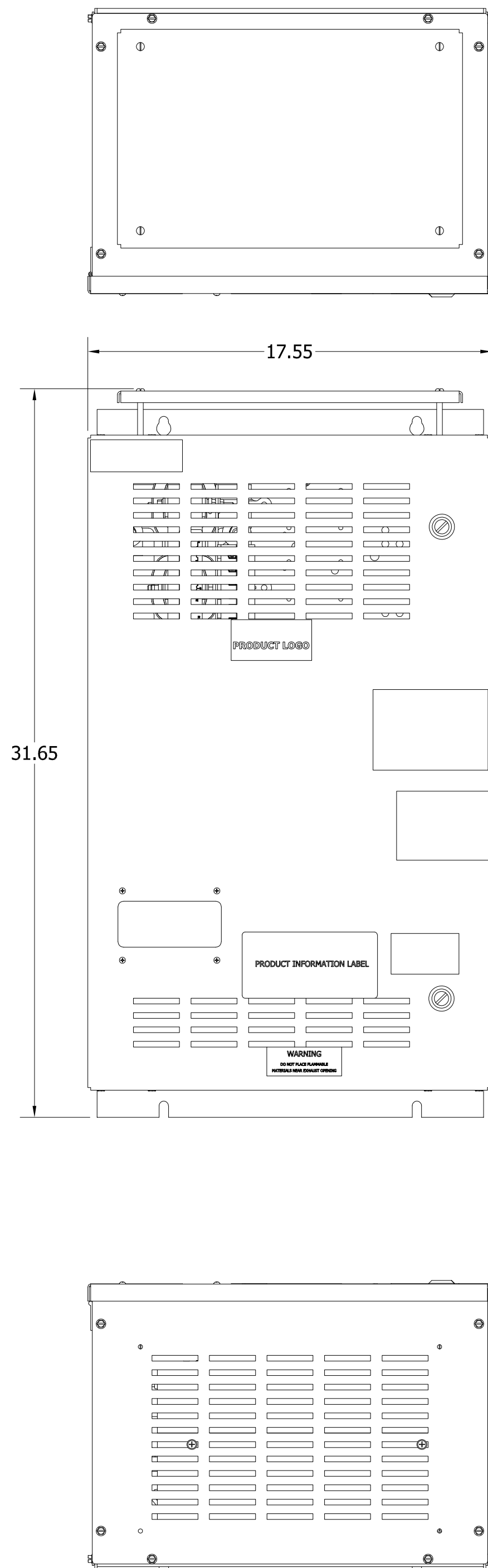
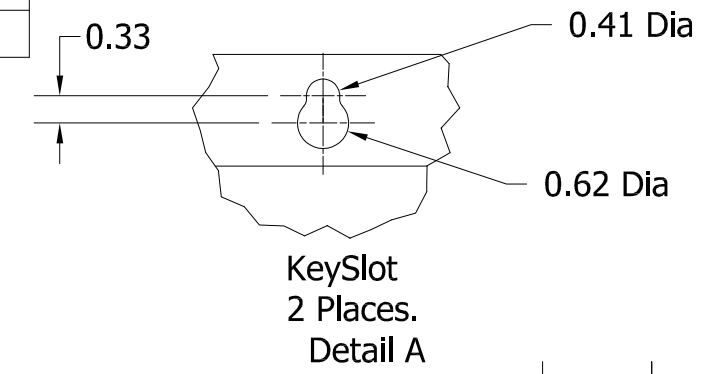


Unit Specifications					
kVar	Harmonic	Volt	HZ.	Phase	HP
5	5TH	600	60	3	30

TCI Part Number	Option	Weight	Schematic
HGL0030CW1S0000	Standard	166lbs	30807-1
HGL0030CW1C0000	Contactor	170lbs	30807

See IOM Manual For Wire Range
And Tightening Torque.



CUSTOMER IS RESPONSIBLE FOR INSTALLATION
TO MEET ALL NATIONAL AND LOCAL ELETRICAL CODES.
Material(s) Shall be RoHS Compliant

TCI, LLC CLAIMS PROPRIETARY RIGHTS IN THE MATERIAL HEREIN DISCLOSED. IT IS SUPPLIED WITHOUT PREDJUDICE TO ANY PATENT RIGHTS OF TCI AND MAY NOT BE REPRODUCED OR USED TO MANUFACTURE ANYTHING SHOWN THEREIN WITHOUT WRITTEN PERMISSION FROM TCI.

NO	REVISION	DATE	BY
A	AS DESIGNED	10/3/17	DSW

	W132 N10611 GRANT DRIVE GERMANTOWN, WI 53022
	HGL0030CW1C0000, 600V, 30HP, 3 Phase HGL0030CW1S0000, 600V, 30HP, 3 Phase 60 Hz, Type 1, Low C, Passive Harmonic Filter
	DRN. BY: DSW SCALE: 1/8 DATE: 10/3/17 APRVD.
DWG. No. 107283DG SHEET 1 OF 1	