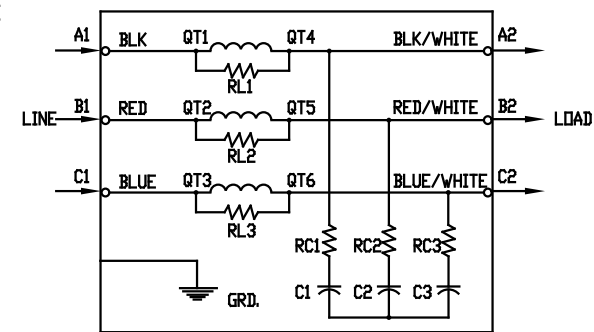


REAR VIEW

SPECIFICATIONS:					
ENCLOSURE OPEN DESIGN					
BASE COLOR POLY PEEL BLACK					
AMP.	305	PHASE	3	WGHT.	80 LB.
VOLT	480	HZ	60		



WIRE LUG :
 RANGE: (1) 600 MCM-#4 AWG
 (2) 250 MCM-1/0 AWG
 500 IN-LB TORQUE

TOLERANCE UNLESS OTHERWISE NOTED:	
MOUNTING	+/- .06
OVERALL	+/- .12

CUSTOMER IS RESPONSIBLE FOR INSTALLATION TO MEET ALL NATIONAL AND LOCAL ELECTRICAL CODES.

					TOLERANCES EXCEPT AS NOTED	7878 N. 86th STREET MILWAUKEE, WI 53224
					DECIMAL .XX ± .01 XXX ± .005	
					FRACTIONAL $\pm 1/32$	V1K305A00 OUTPUT FILTER 305 AMP., 480 V., OPEN
					ANGULAR $\pm 1/2^\circ$	DRN BY RJC DATE 5/20/05 DWG. NO. B 102655DG
NO	REVISION	DATE	BY			SCALE -- APPRVS. SHT.1 OF 1