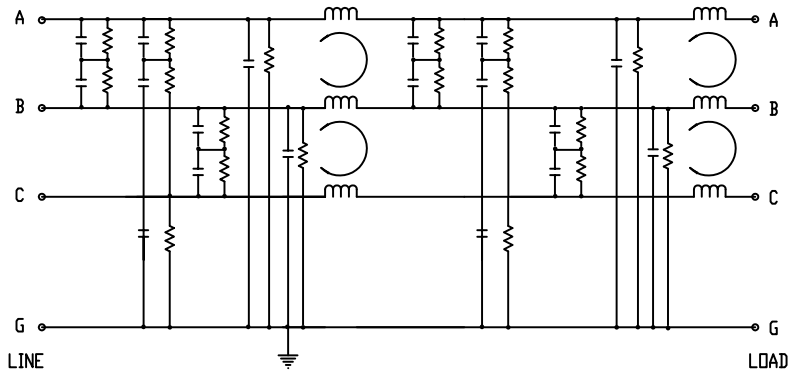
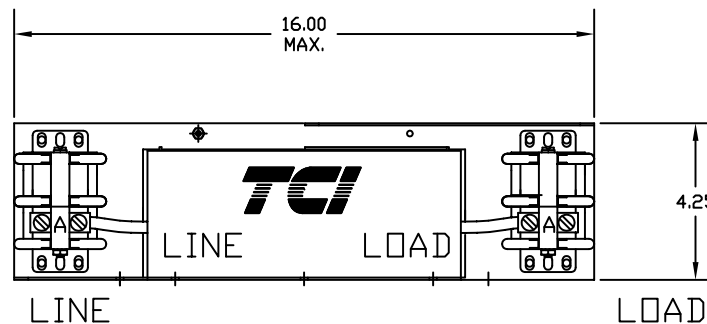
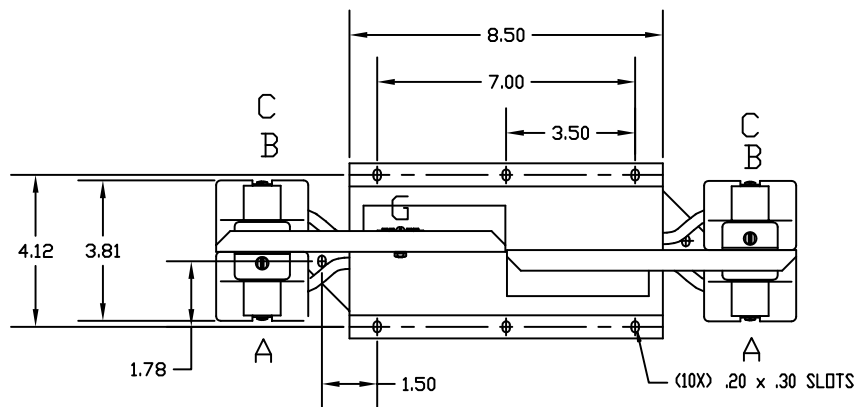


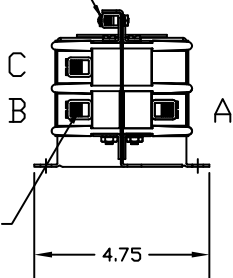
SCHEMATIC DIAGRAM



NOTE: TORQUE WIRE LUGS TO 50 LB-IN.



ONE 4-14 AWG CONNECTOR FOR GROUND



ONE 6-1/0 AWG CONNECTION PER TERMINAL

| MINIMUM INSERTION LOSS 50 Ω CIRCUIT | | | |
|-------------------------------------|----------------|-------------------|----------------|
| COMMON MODE | | DIFFERENTIAL MODE | |
| mHz | min. I.L. (dB) | mHz | min. I.L. (dB) |
| .01 | | .01 | |
| .05 | | .05 | |
| .15 | 60 | .15 | 15 |
| 0.5 | 70 | 0.5 | 25 |
| 1.0 | 70 | 1.0 | 45 |
| 5.0 | 65 | 5.0 | 40 |
| 10 | 55 | 10 | 40 |
| 30 | 45 | 30 | 30 |
| 100 | | 100 | |

TEST SPECIFICATIONS

WEIGHT: 13 LBS MAX

POWER DISSIPATION @ RATED CURRENT: 25.0W MAX

DESIGNED TO COMPLY TO EN 133200. CAN 22.2 NO.8 APPROVED TO UL 1283

MAX LEAKAGE CURRENT EACH LINE TO GROUND

30 mA AT 250 VAC 60 Hz

60 mA AT 480 VAC 60 Hz

HI-POT(1 MIN) HI-POT(1 MIN)
L/G 2210 VDC A-G, B-G, C-G (3 TESTS).
L/L 2780 VDC A-B, B-C, A-C, (3 TESTS).

RATED VOLTAGE: 480VAC MAX, 50-60Hz (3-PHASE)

RATED CURRENT AT: 480VAC, 80A

MAX OPERATING AMBIENT TEMPERATURE AT RATED CURRENT: 40°C

HUMIDITY RANGE: 0-95% R.H.

(REV 2)

| | | | | |
|----|----------|-------------------------------------|----|--|
| | | TOLERANCES EXCEPT AS NOTED: DECIMAL | | TCI 7878 N. 86th STREET MILWAUKEE, WI 53224 |
| | | .XX ± .03 .XXX ± .01 | | |
| | | FRACTIONAL ± 1/32 | | KRF80APT 80 AMP, 3PH, 480V, RFI |
| | | ANGULAR ± 1/2° | | |
| NO | REVISION | DATE | BY | DRAWN BY DSW SCALE 3/8"=1" DATE 02-01-02 APPROVED BY C KRF80APT SHT.1 OF 1 |