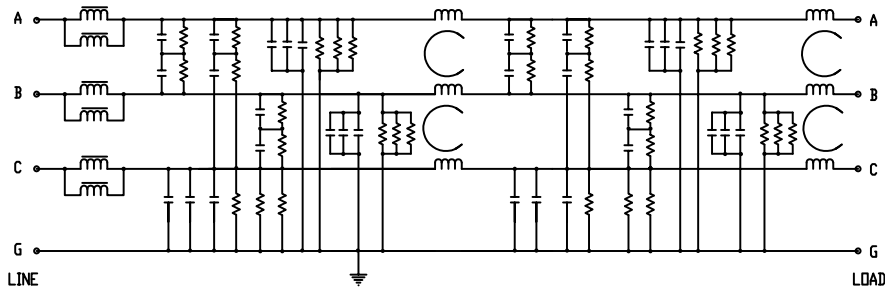
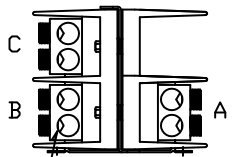
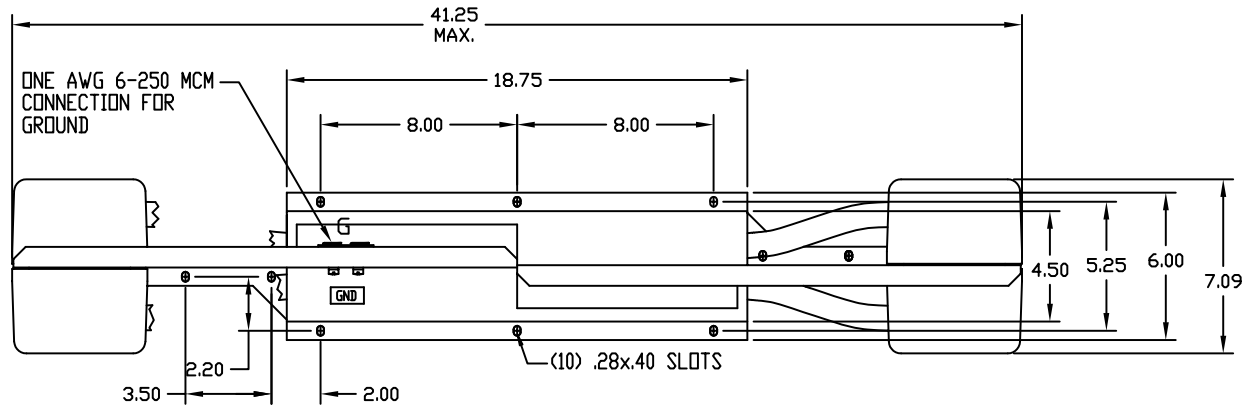


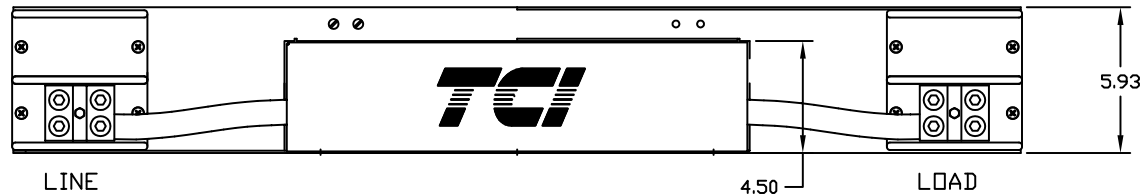
SCHEMATIC DIAGRAM



NOTE: TORQUE WIRE LUGS TO 375 LB-IN.



TWO AWG 4-500 MCM CONNECTIONS PER TERMINAL



TEST SPECIFICATIONS

MINIMUM INSERTION LOSS 50 Ω CIRCUIT			
COMMON MODE		DIFFERENTIAL MODE	
mHz	min. I.L. (dB)	mHz	min. I.L. (dB)
.01		.01	
.05	15	.05	20
.15	60	.15	30
0.5	70	0.5	40
1.0	70	1.0	40
5.0	60	5.0	35
10	45	10	30
30	30	30	20
100		100	

WEIGHT: 65 LBS MAX.

POWER DISSIPATION @ RATED CURRENT: 60.0W MAX

DESIGNED TO COMPLY TO EN 133200. CAN 22.2 NO.8 APPROVED TO UL 1283

MAX. LEAKAGE CURRENT EACH LINE TO GROUND

140 mA AT 250 VAC 60 Hz

280 mA AT 480 VAC 60 Hz

HI-POT(1 MIN) HI-POT(1 MIN)

L/G 2210 VDC A-G, B-G, C-G (3 TESTS).

L/L 2780 VDC A-B, B-C, A-C, (3 TESTS).

RATED VOLTAGE: 480VAC MAX, 50/60Hz (3-PHASE)

RATED CURRENT AT: 480VAC, 608A

MAX OPERATING AMBIENT TEMPERATURE AT RATED CURRENT: 40°C

HUMIDITY RANGE: 0-95% R.H.

PATENT #6218913

(REV 2)

		TOLERANCES EXCEPT AS NOTED DECIMAL		TCI 7878 N. 86th STREET MILWAUKEE, WI 53224
		.XX ± .03 .XXX ± .01		
		FRACTIONAL ± 1/32		KRF608APT 608 AMP, RFI FILTER
		ANGULAR ± 1/2°		
NO	REVISION	DATE	BY	DRAWN BY DSW DATE 02-06-02 SCALE 1/4"=1' APPROVED BY C KRF608APT SHT.1 OF 1