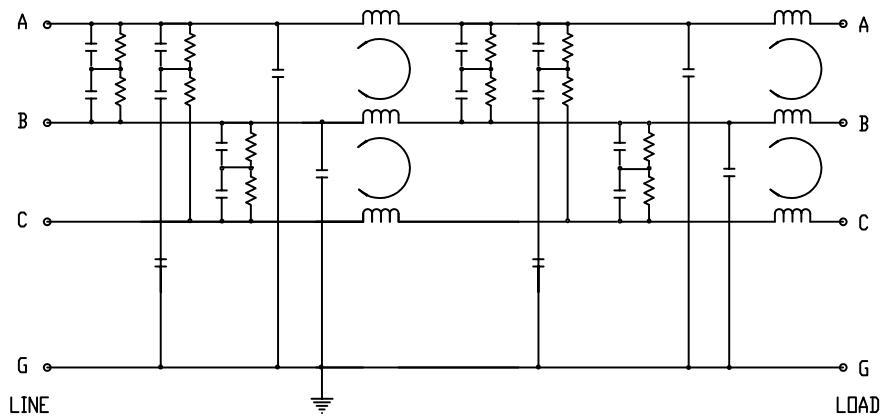
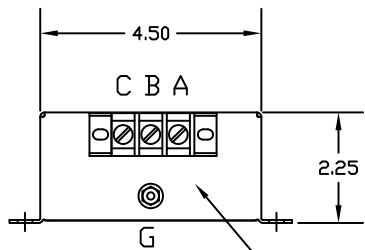
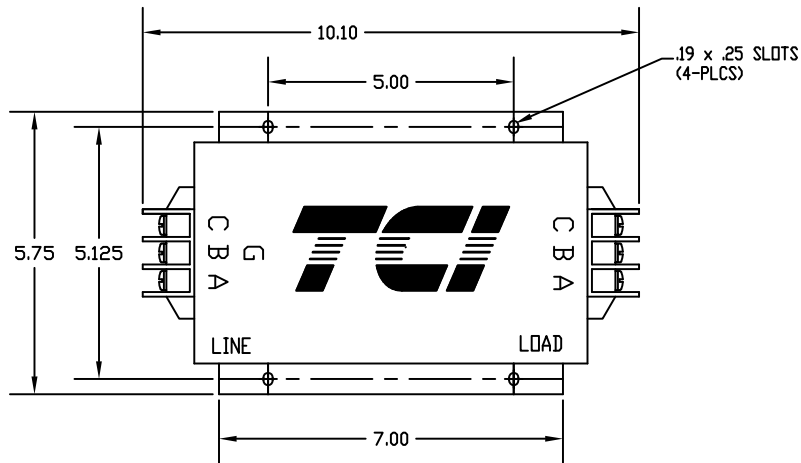


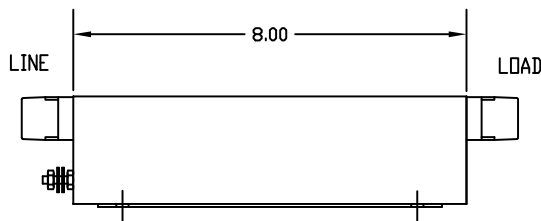
SCHEMATIC DIAGRAM



NOTE: TORQUE TERMINALS TO 20 LB-IN MAX.



TERMINALS:  
A,B,C: 10-32 SCREW  
G: 8-32 SCREW



MINIMUM INSERTION LOSS 50 Ω CIRCUIT			
COMMON MODE		DIFFERENTIAL MODE	
mHz	min. I.L. (dB)	mHz	min. I.L. (dB)
.01		.01	
.05		.05	
.15	60	.15	10
0.5	75	0.5	40
1.0	80	1.0	50
5.0	75	5.0	50
10	70	10	50
30	50	30	40
100		100	

TEST SPECIFICATIONS

WEIGHT: 7 LBS MAX

POWER DISSIPATION @ RATED CURRENT: 21.0W MAX

DESIGNED TO COMPLY TO EN 133200. CAN 22.2 NO.8  
APPROVED TO UL 1283

MAX LEAKAGE CURRENT EACH LINE TO GROUND

15 mA AT 250 VAC 60 Hz  
30 mA AT 480 VAC 60 Hz

HI-POT(1 MIN) HI-POT(1 MIN)  
L/G 2210 VDC A-G, B-G, C-G (3 TESTS).  
L/L 2780 VDC A-B, B-C, A-C, (3 TESTS).

RATED VOLTAGE: 480VAC MAX, 50/60Hz (3-PHASE)  
RATED CURRENT AT: 480VAC, 50A  
MAX OPERATING AMBIENT TEMPERATURE AT RATED CURRENT: 40°C  
HUMIDITY RANGE: 0-95% R.H.  
INSULATION RESISTANCE: 1000 MEGOHMS MIN AT 250VDC

(REV 2)

				TOLERANCES EXCEPT AS NOTED: DECIMAL		7878 N. 86th STREET MILWAUKEE, WI 53224
				.XX ±.03		
				.XXX±.01		
				FRACTIONAL ± 1/32		
				ANGULAR ± 1/2°		
NO	REVISION	DATE	BY	SCALE 1/2"=1"	DRAWN BY DSW DATE 02-01-02 APPROVED BY [Signature]	DWG. NO. KRF50ATB 50 AMP, 3PH, 480V, RFI KRF50ATB SHT.1 OF1