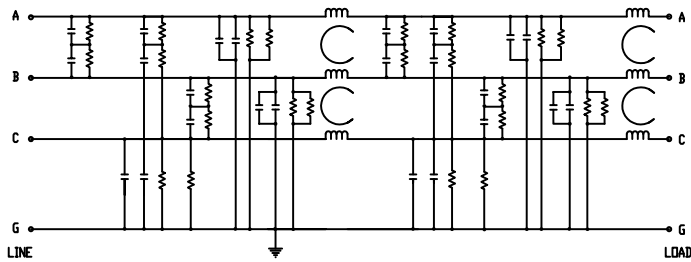
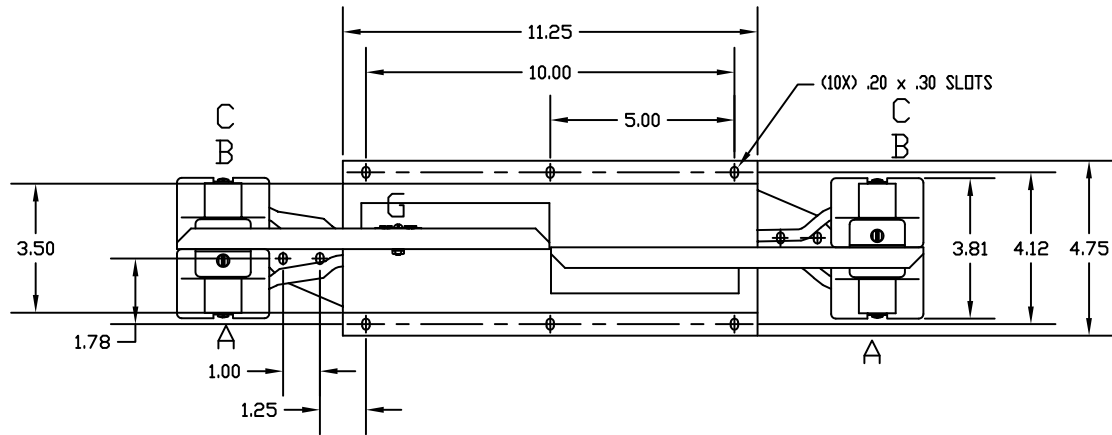


SCHEMATIC DIAGRAM



NOTE: TORQUE WIRE LUGS TO 150 LB-IN.



MINIMUM INSERTION LOSS 50 Ω CIRCUIT			
COMMON MODE		DIFFERENTIAL MODE	
mHz	min. I.L. (dB)	mHz	min. I.L. (dB)
.01		.01	
.05		.05	
.15	60	.15	30
0.5	70	0.5	35
1.0	70	1.0	35
5.0	65	5.0	45
10	55	10	40
30	45	30	30
100		100	

TEST SPECIFICATIONS

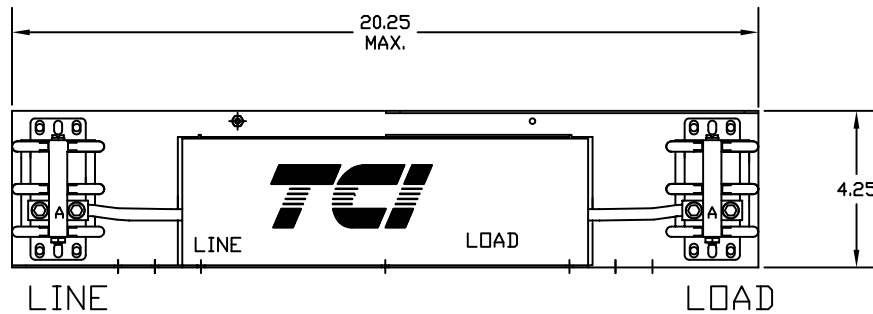
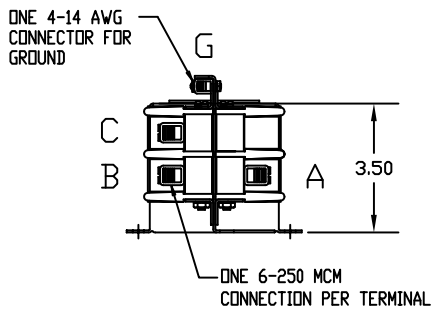
WEIGHT: 20 LBS MAX

POWER DISSIPATION @ RATED CURRENT: 15.0W MAX
 DESIGNED TO COMPLY TO EN 133200. CAN 22.2 NO.8
 APPROVED TO UL 1283

MAX LEAKAGE CURRENT EACH LINE TO GROUND
 90 mA AT 250 VAC 60 Hz
 180 mA AT 480 VAC 60 Hz

HI-POT(1 MIN) HI-POT(1 MIN)
 L/G 2210 VDC A-G, B-G, C-G (3 TESTS).
 L/L 2780 VDC A-B, B-C, A-C, (3 TESTS).

RATED VOLTAGE: 480VAC MAX, 50/60Hz (3-PHASE)
 RATED CURRENT AT: 480VA, 160A
 MAX OPERATING AMBIENT TEMPERATURE AT RATED CURRENT: 40°C
 HUMIDITY RANGE: 0-95% R.H.
 PATENT #6218913



(REV 2)

		TOLERANCES EXCEPT AS NOTED: DECIMAL		TCI 7878 N. 86th STREET MILWAUKEE, WI 53224
		.XX ±.03 .XXX±.01 FRACTIONAL ± 1/32		
		ANGULAR ± 1/2°		KRF160APT 160 AMP, 3PH, 480V, RFI
NO	REVISION	DATE	BY	
		SCALE 3/8"=1"		DATE 02-01-02
		APPROV'D		DRWG NO C KRF160APT
		SHT.1 OF 1		