

TORQUE WIRE LUG TO 50 IN-LBS

WEIGHT: 13 LBS

POWER DISSIPATION @ RATED CURRENT: 20W MAX

AGENCIES: UL RECOGNIZED UNDER UL 1283

MAX LEAKAGE CURRENT EACH LINE TO GROUND

15X6mA AT 250VAC 60Hz

35X6mA AT 600VAC 60Hz

HI-POT(1 MIN)

L/G 3150VDC

L/L 3150VDC

HI-POT(3150 VDC,1 MIN)

A-B, A-C, A-N, A-G

B-C, B-N, B-G

C-N, C-G, N-G (10 TESTS)

RATED VOLTAGE: 600VAC MAX, 50-60Hz

RATED CURRENT AT: 250VAC, 80A - 600VAC, 80A

MAX OPERATING AMBIENT TEMPERATURE AT RATED CURRENT: 40°C

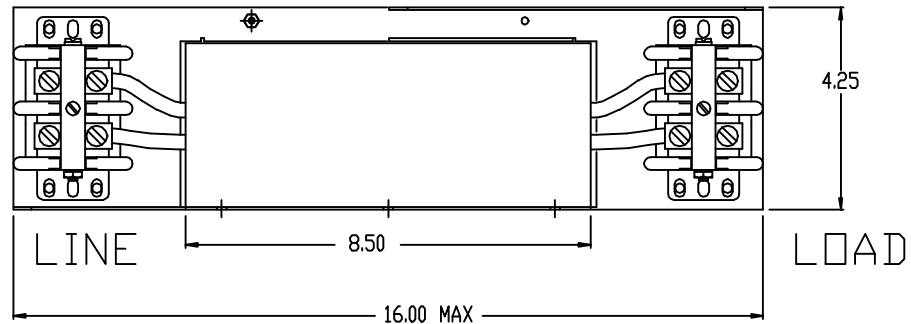
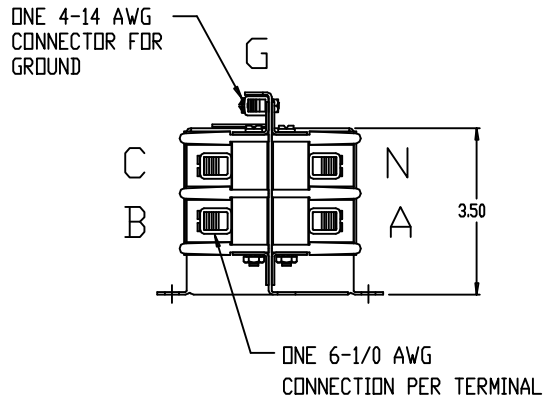
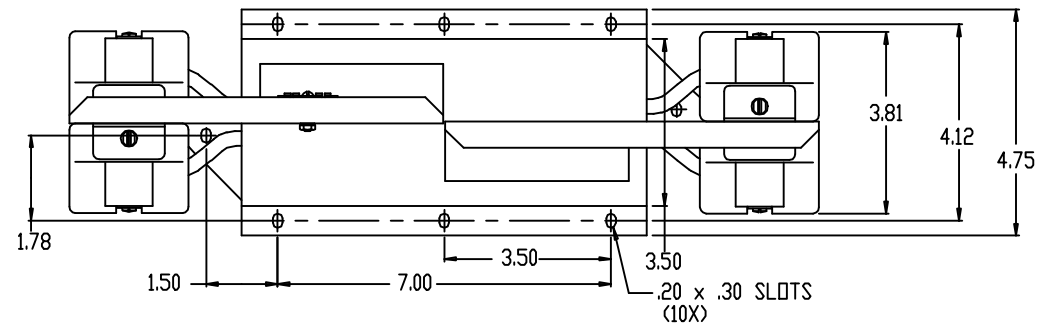
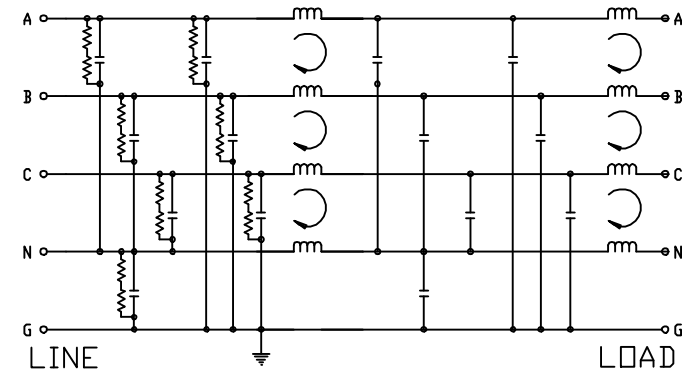
HUMIDITY RANGE: 0-95% R.H.

INSULATION RESISTANCE: 1000 MEGOHMS MIN AT 250VDC

50 Ω INSERTION LOSS

COMMON MODE		DIFFERENTIAL MODE	
mHz	min. I.L. (dB)	mHz	min. I.L. (dB)
.01		.01	
.05		.05	
.15	60	.15	15
0.5	60	0.5	25
1.0	60	1.0	25
5.0	60	5.0	40
10	50	10	40
30	40	30	30
100		100	

ELECTRICAL SCHEMATIC



				TOLERANCES (EXCEPT AS NOTED)		7878 N. 86th STREET MILWAUKEE, WI 53224	
				DECIMAL			
				.XX ± .03		FILTER SPECIFICATION KRF80CPT	
				.XXX ± .010			
SEE ECD #1887		1/14/2000	BW	FRACTIONAL		DRN BY: BW DATE: 07-17-98 SCALE: 1/2"=1" APVAL:	
SEE ECD #1792		7-15-99	BW	± 1/16		DWG. NO. C 100282DG SHT. 1 OF 1	
NO REVISION		DATE	BY	ANGULAR			
				± 1/2°			