

TORQUE WIRE LUGS TO 375 IN-LBS

WEIGHT: 35 LBS

POWER DISSIPATION @ RATED CURRENT: 30W MAX

AGENCIES: UL RECOGNIZED UNDER UL 1283

MAX LEAKAGE CURRENT EACH LINE TO GROUND

30X6mA AT 250VAC 60Hz

70X6mA AT 600VAC 60Hz

HI-POT(1 MIN)

HI-POT(3150 VDC,1 MIN)

L/G 3150VDC

A-B, A-C, A-N, A-G

B-C, B-N, B-G

L/L 3150VDC

C-N, C-G, N-G (10 TESTS)

RATED VOLTAGE: 600VAC MAX, 50-60Hz

RATED CURRENT AT: 250VAC, 300A - 600VAC, 300A

MAX OPERATING AMBIENT TEMPERATURE AT RATED CURRENT: 40°C

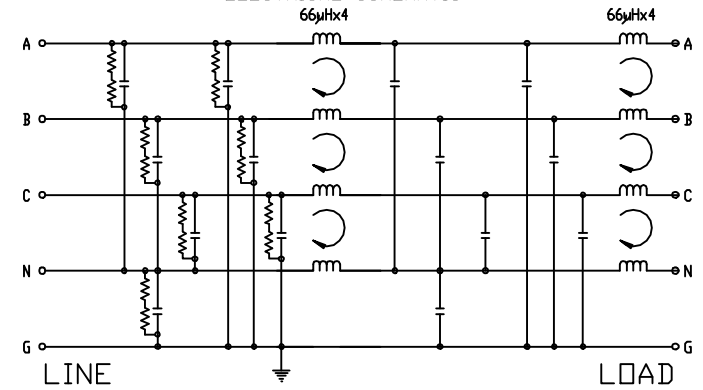
HUMIDITY RANGE: 0-95% R.H.

INSULATION RESISTANCE: 1000 MEGOHMS MIN AT 250VDC

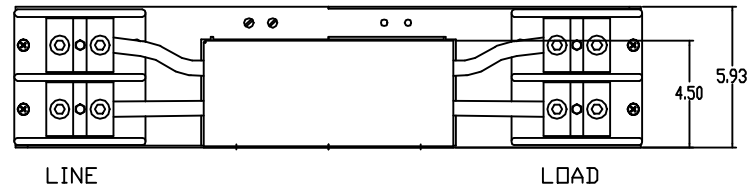
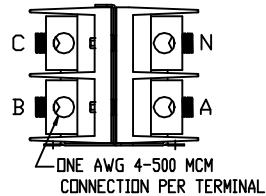
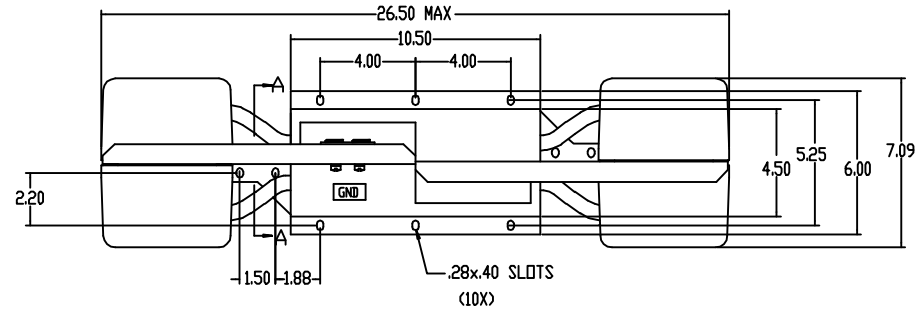
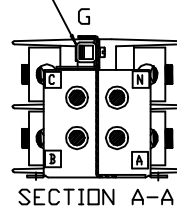
50 Ω INSERTION LOSS

COMMON MODE		DIFFERENTIAL MODE	
mHz	min. I.L. (dB)	mHz	min. I.L. (dB)
.01		.01	
.05		.05	
.15	60	.15	20
0.5	55	0.5	30
1.0	55	1.0	35
5.0	50	5.0	35
10	40	10	30
30	30	30	20
100		100	

ELECTRICAL SCHEMATIC



ONE AWG 6-250 AWG CONNECTION FOR GROUND



		TOLERANCES (EXCEPT AS NOTED)		TCI 7878 N. 86th STREET MILWAUKEE, WI 53224
		DECIMAL .XX ± .03 .XXX ± .010		
SEE ECD #1887	1/14/2000	BW	FRACTIONAL ± 1/16	FILTER SPECIFICATIONS KRF300CPT
SEE ECD #1792	7-15-99	BW	ANGULAR ± 1/2°	
NO	REVISION	DATE	BY	DRN BY: BW DATE: 06-03-98 SCALE: 1/4"=1" DWG. NO: C 100280DG SHT. 1 OF 1