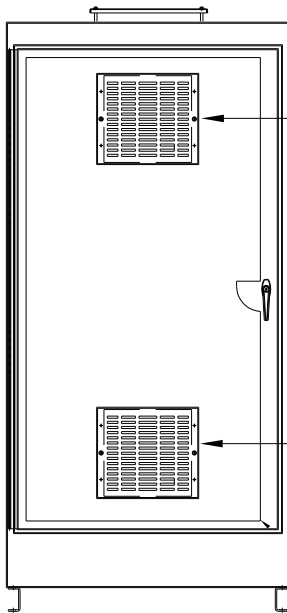


CAT# KMG750AE01  
 HP 600 FLA 750  
 VOLTS 460/480V  
 60 HZ 3 PH

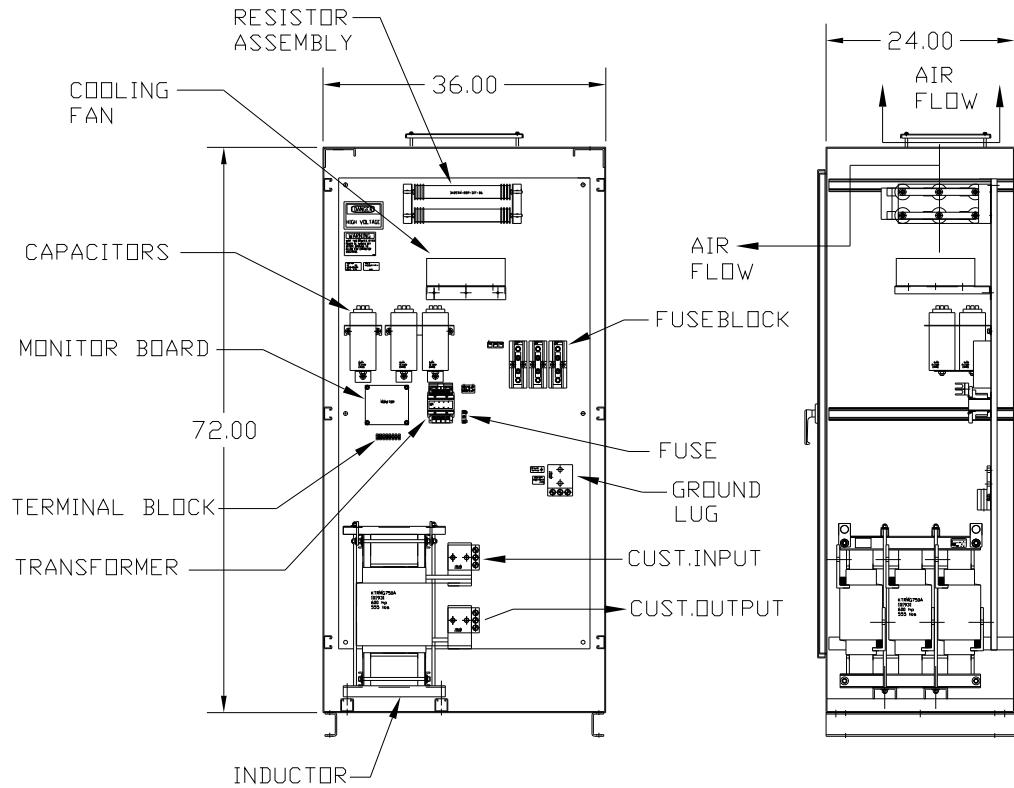
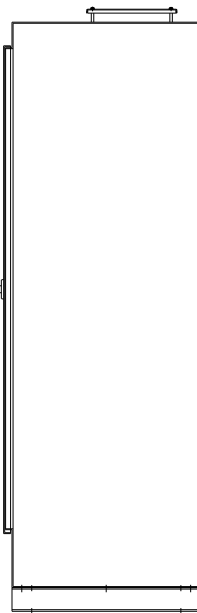
DWG # 101977DG  
 ENCLOSURE TYPE 1  
 DATE

FOR SCHEMATIC SEE DRAWING P/N 24281-5  
 CUSTOMER IS RESPONSIBLE FOR PROPER  
 INSTALLATION OF ASSEMBLY IN ACCORDANCE  
 WITH LOCAL AND NATIONAL CODES.



10" FAN  
 AND FILTER


10" GRILLE  
 AND FILTER



CAT# KMG750AE01

GROUND LUG  
 WIRE RANGE: (3)600MCM-#2 AWG  
 TORQUE: 375 LB-IN

LINE CONNECTIONS  
 WIRE RANGE: (3)600MCM-#2 AWG  
 TORQUE: 375 LB-IN

				TOLERANCES (EXCEPT AS NOTED)	 7878 N. 86th STREET MILWAUKEE, WI 53224
				DECIMAL	
				.XX ± .01 .XXX ± .005	
				FRACTIONAL ± 1/32	
				ANGULAR ± 1/2°	DRN BY RJC DATE 1/6/03 DWG. NO. 101977DG
NO	REVISION	DATE	BY	SCALE FULL	APRVD. B SHT. 1 OF 1

SINEWAVE FILTER-ENCLOSED  
 600 HP, 750 AMP, 480 V.