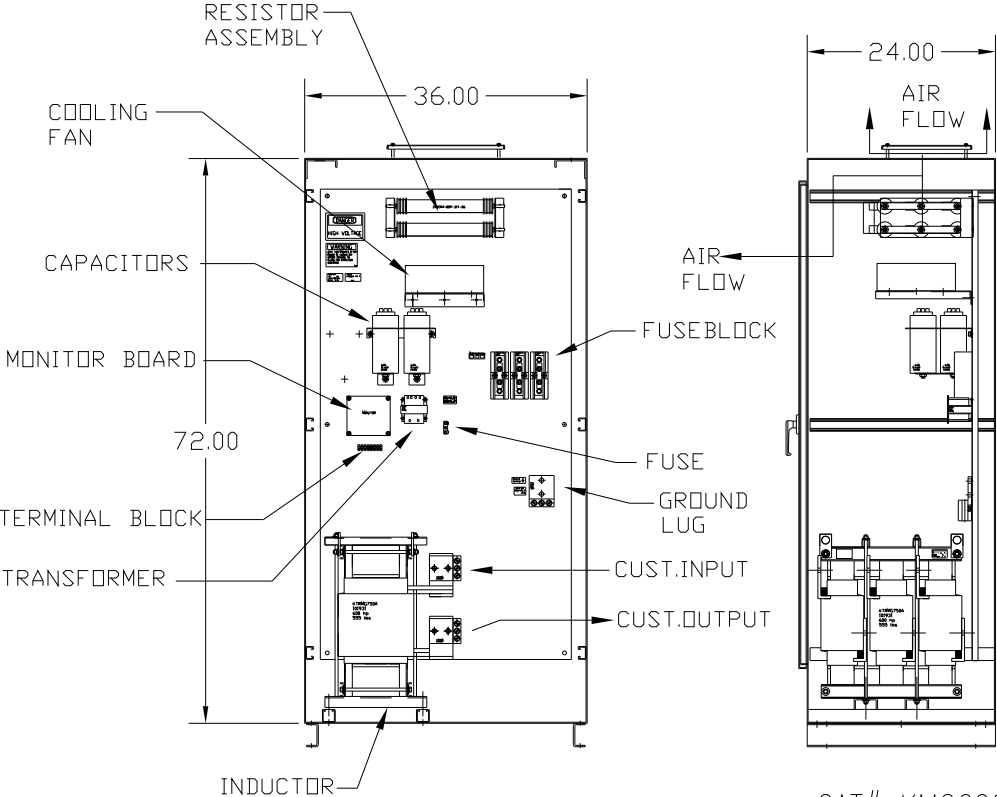
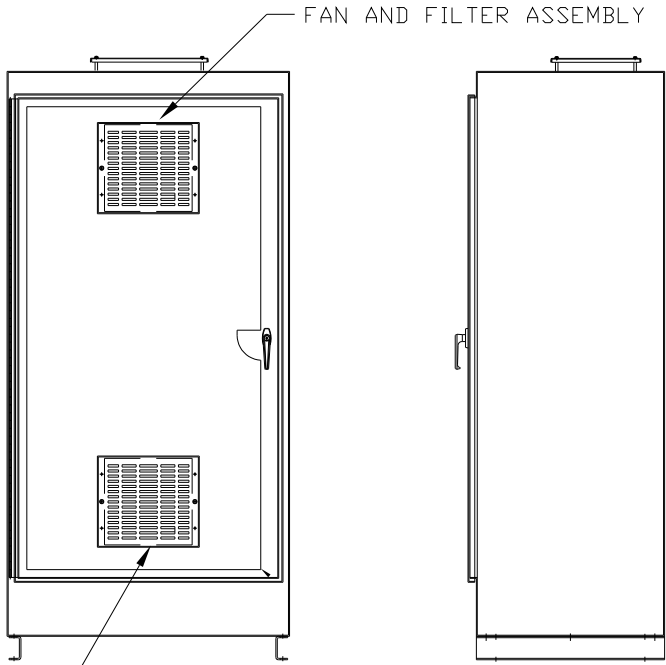


CAT# KMG600CE01  
 HP 600 FLA 600  
 VOLTS 575/600V  
 60 HZ 3 PH

DWG # 102021DG  
 ENCLOSURE TYPE 1  
 DATE

FOR SCHEMATIC SEE DRAWING P/N 24281-\_\_\_\_\_


CUSTOMER IS RESPONSIBLE FOR PROPER  
 INSTALLATION OF ASSEMBLY IN ACCORDANCE  
 WITH LOCAL AND NATIONAL CODES.



CAT# KMG600CE01

GROUND LUG  
 WIRE RANGE: (2)600MCM-#2 AWG  
 TORQUE: 500 LB-IN

LINE CONNECTIONS  
 WIRE RANGE: (2)600MCM-#2 AWG  
 TORQUE: 500 LB-IN

					TOLERANCES (EXCEPT AS NOTED):	 7878 N. 86th STREET MILWAUKEE, WI 53224
					DECIMAL	
					.XX ± .01 .XXX ± .005	
					FRACTIONAL ± 1/32	
					ANGULAR ± 1/2°	DRN BY: RJC SCALE: --
NO	REVISION	DATE	BY			DATE: 1/26/03 APRVD:
						DWG. NO. B 102021DG SHT. 1 OF 1

SINEWAVE FILTER-ENCLOSED  
 600 HP, 600 AMP, 600 V.