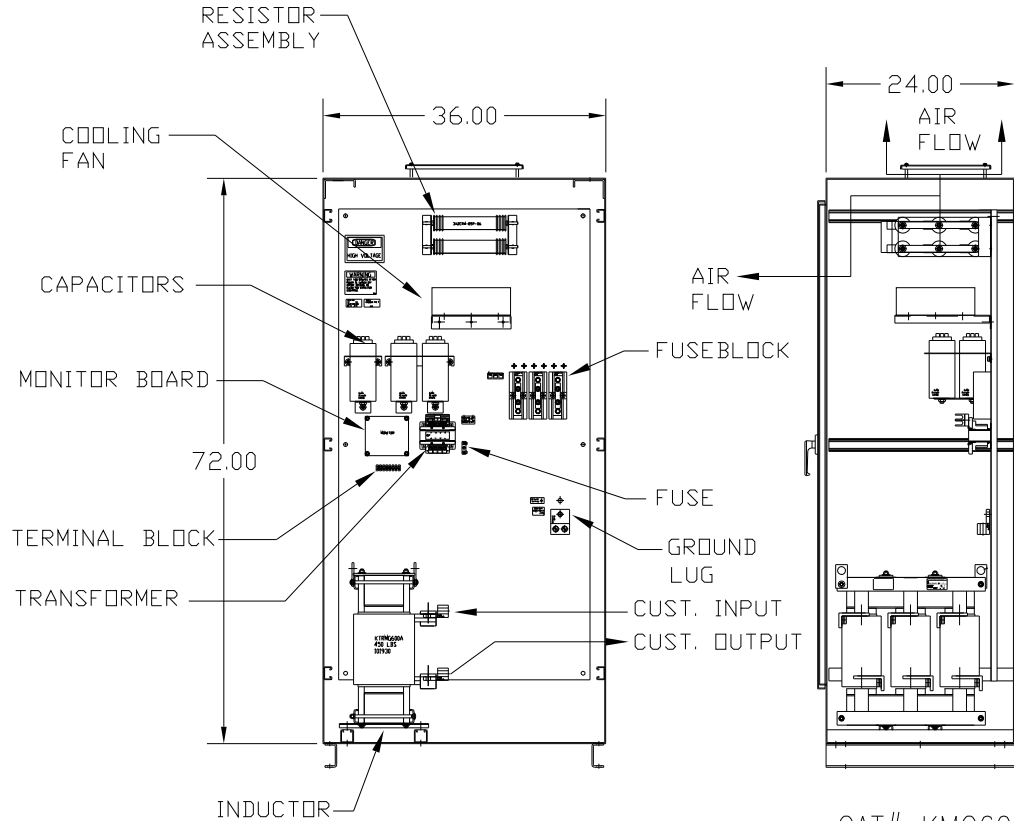
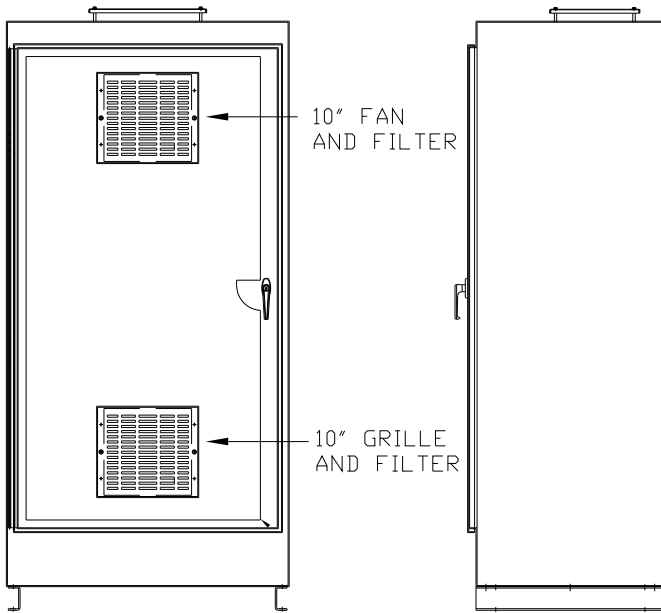


CAT# KMG600AE01  
 HP 500 FLA 600  
 VOLTS 460/480V  
 60 HZ 3 PH

DWG # 101976DG  
 ENCLOSURE TYPE 1  
 DATE

FOR SCHEMATIC SEE DRAWING P/N 24281-5


CUSTOMER IS RESPONSIBLE FOR PROPER  
 INSTALLATION OF ASSEMBLY IN ACCORDANCE  
 WITH LOCAL AND NATIONAL CODES.



CAT# KMG600AE01

GROUND LUG  
 WIRE RANGE: 2>600MCM-#2 AWG  
 TORQUE: 500 LB-IN

LINE CONNECTIONS  
 WIRE RANGE: 2>600MCM-#2 AWG  
 TORQUE: 500 LB-IN

					TOLERANCES (EXCEPT AS NOTED)	 7878 N. 86th STREET MILWAUKEE, WI 53224
					DECIMAL	
					.XX ± .01 .XXX ± .005	
					FRACTIONAL ± 1/32	
					ANGULAR ± 1/2°	SINEWAVE FILTER-ENCLOSED 500 HP, 600 AMP, 480 V.
NO	REVISION	DATE	BY			DRN BY RJC DATE 1/6/03 DWG. NO. 101976DG SCALE FULL APRVD. B SHT. 1 OF 1