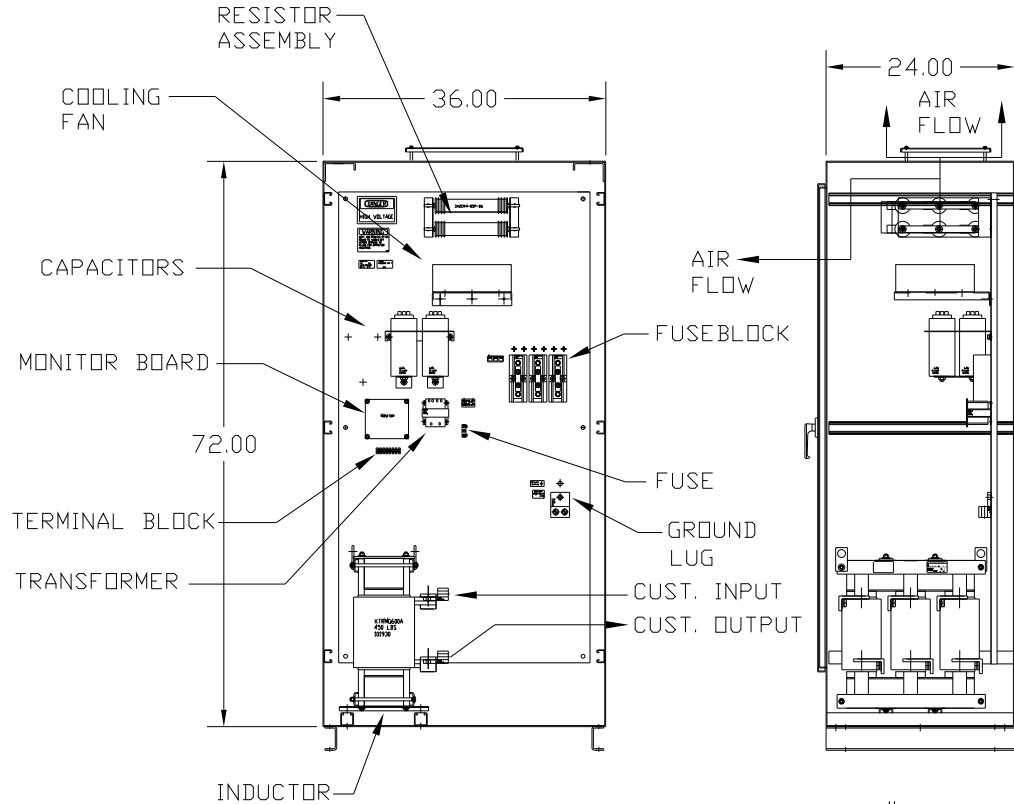
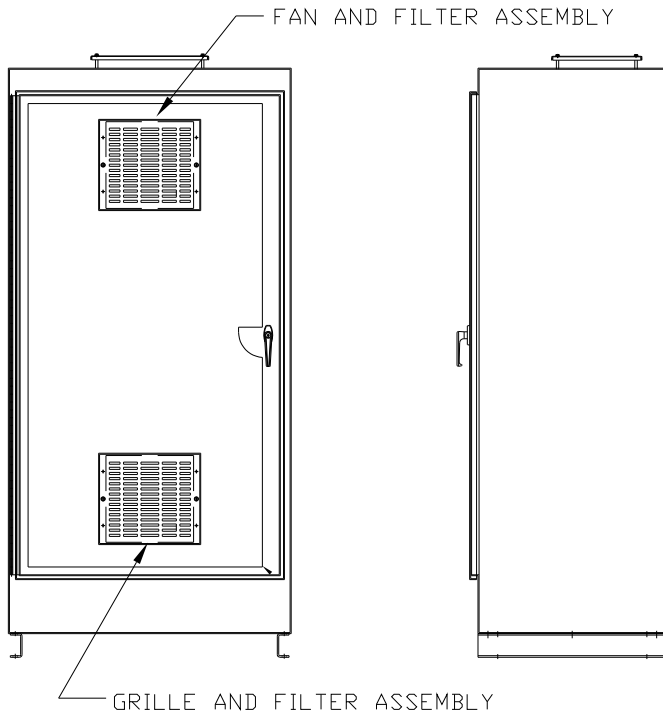


CAT# KMG500CE01  
 HP 500 FLA 500  
 VOLTS 575/600V  
 60 HZ 3 PH

DWG # 102020DG  
 ENCLOSURE TYPE 1  
 DATE

FOR SCHEMATIC SEE DRAWING P/N 24281-15


CUSTOMER IS RESPONSIBLE FOR PROPER  
 INSTALLATION OF ASSEMBLY IN ACCORDANCE  
 WITH LOCAL AND NATIONAL CODES.



CAT# KMG500CE01

GROUND LUG  
 WIRE RANGE: <2>600MCM-#2 AWG  
 TORQUE: 500 LB-IN

LINE CONNECTIONS  
 WIRE RANGE: <2>600MCM-#2 AWG  
 TORQUE: 500 LB-IN

					TOLERANCES (EXCEPT AS NOTED)	 7878 N. 86th STREET MILWAUKEE, WI 53224
					DECIMAL	
					.XX ± .01 .XXX ± .005	
					FRACTIONAL ± 1/32	
					ANGULAR ± 1/2°	SINEWAVE FILTER-ENCLOSED 500 HP, 500 AMP, 600 V.
NO	REVISION	DATE	BY		DRN BY RJC	DATE 1/26/03 SCALE -- APRVD.
						DWG. NO. B 102020DG SHT. 1 of 1