

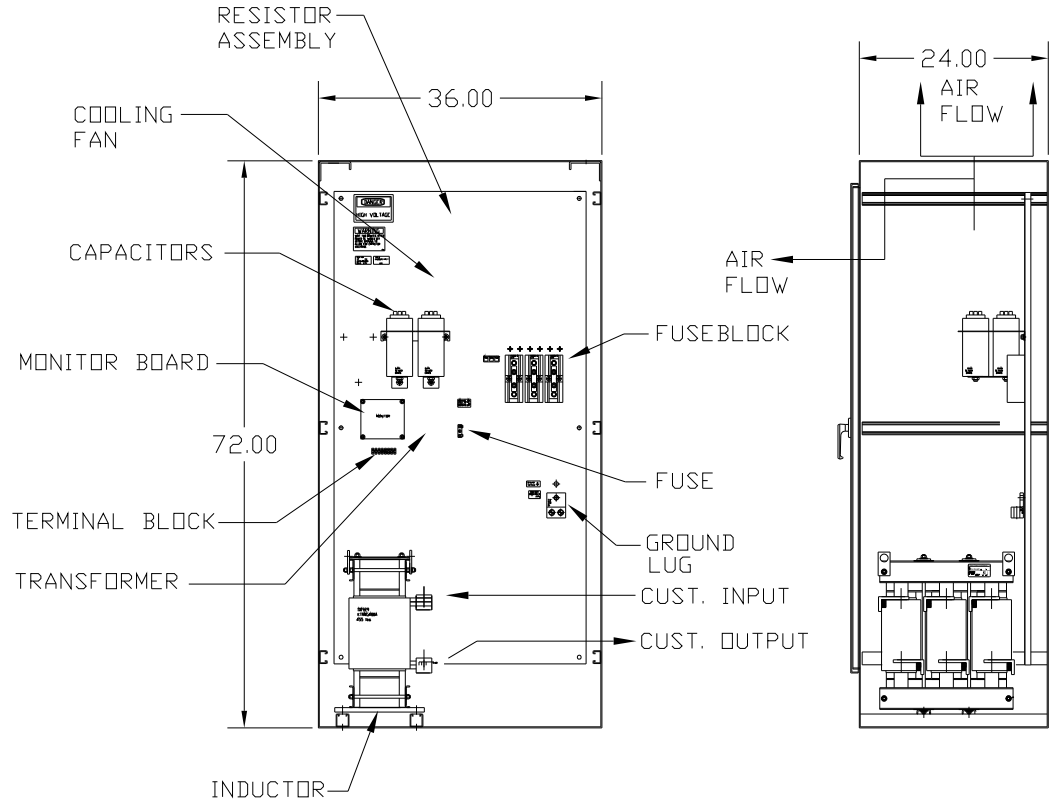
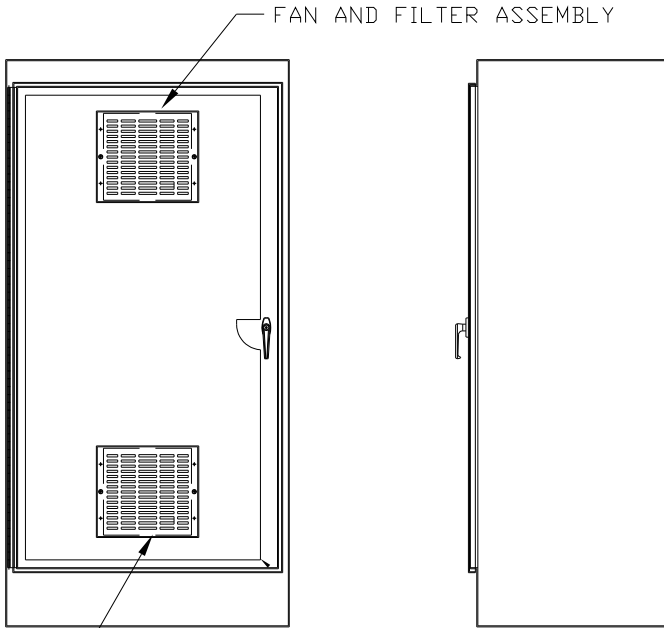


CAT# KMG420CE01
 HP 400 FLA 480
 VOLTS 575/600V
 60 HZ 3 PH

DWG # 102019DG
 ENCLOSURE TYPE 1
 DATE


FOR SCHEMATIC SEE DRAWING P/N 24281-14

CUSTOMER IS RESPONSIBLE FOR PROPER
 INSTALLATION OF ASSEMBLY IN ACCORDANCE
 WITH LOCAL AND NATIONAL CODES.



GROUND LUG
 WIRE RANGE: (2)350MCM-#4 AWG
 TORQUE: 275 LB-IN

LINE CONNECTIONS
 WIRE RANGE: (2)350MCM-#4 AWG
 TORQUE: 275 LB-IN

				TOLERANCES (EXCEPT AS NOTED)	 7878 N. 86th STREET MILWAUKEE, WI 53224
				DECIMAL	
				.XX ±.01 .XXX±.005	
				FRACTIONAL ± 1/32	
				ANGULAR ± 1/2°	SINEWAVE FILTER-ENCLOSED 400 HP, 420 AMP, 600 V.
NO	REVISION	DATE	BY		DRN BY RJC DATE 1/26/03 DWG. NO. 102019DG SCALE FULL APRVD. B SHT. 1 of 1