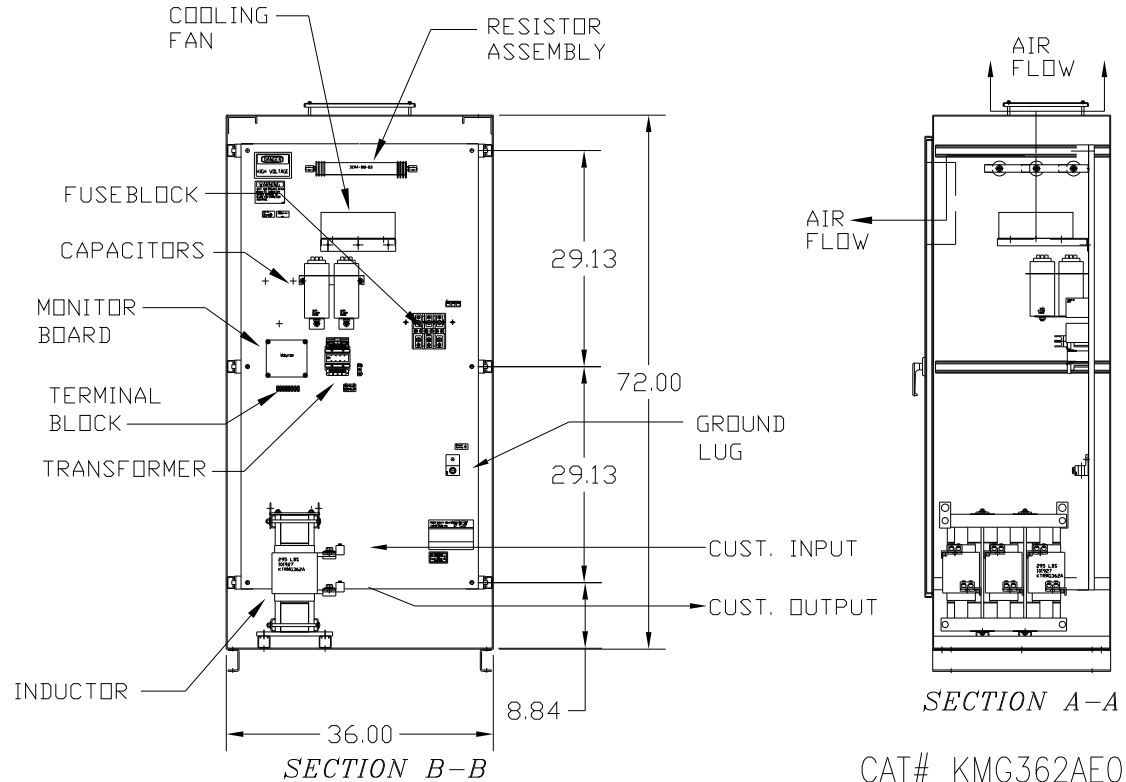
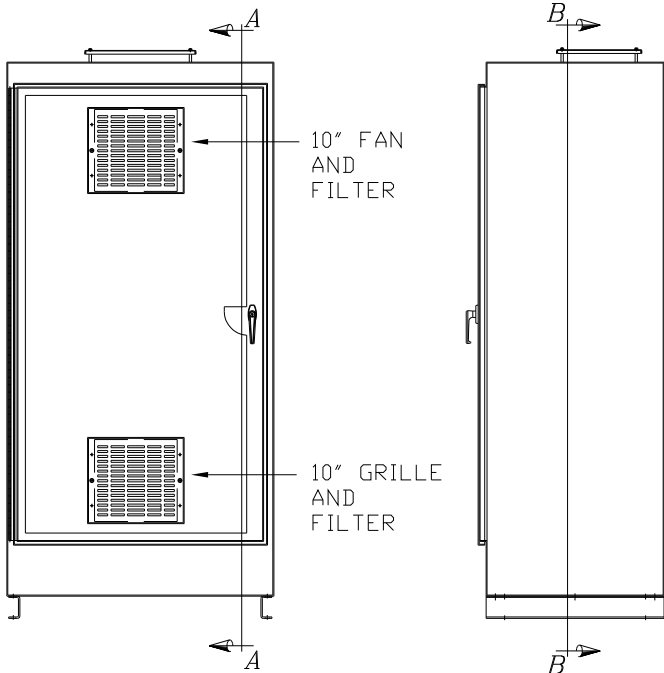


CAT# KMG362AE01
 HP 300 FLA 362
 VOLTS 460/480V
 60 HZ 3 PH

DWG # 101973DG
 ENCLOSURE TYPE 1
 DATE

FOR SCHEMATIC SEE DRAWING P/N 24281-5
 CUSTOMER IS RESPONSIBLE FOR PROPER
 INSTALLATION OF ASSEMBLY IN ACCORDANCE
 WITH LOCAL AND NATIONAL CODES.



GROUND LUG
 WIRE RANGE: (2)350CM-#4 AWG
 TORQUE: 275 LB-IN

LINE CONNECTIONS
 WIRE RANGE: (2)350MCM-#4 AWG
 TORQUE: 275 LB-IN

| | | | | | | | |
|----|----------|------|----|---------------------------------|--|---|--|
| | | | | TOLERANCES (EXCEPT AS NOTED) | | 7878 N. 86th STREET MILWAUKEE, WI 53224 | |
| | | | | DECIMAL | | | |
| | | | | .XX ± .01 | | SINEWAVE FILTER-ENCLOSED 300 HP, 362 AMP, 480 V. | |
| | | | | .XXX ± .005 | | | |
| | | | | FRACTIONAL | | DRN BY RJC | |
| | | | | ± 1/32 | | DATE 1/6/03 | |
| | | | | ANGULAR | | APRVD. B | |
| | | | | ± 1/2° | | DWG. NO. 101973DG | |
| NO | REVISION | DATE | BY | SCALE -- | | SHT. 1 OF 1 | |