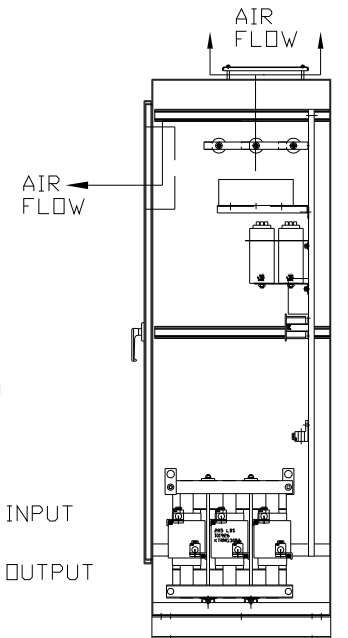
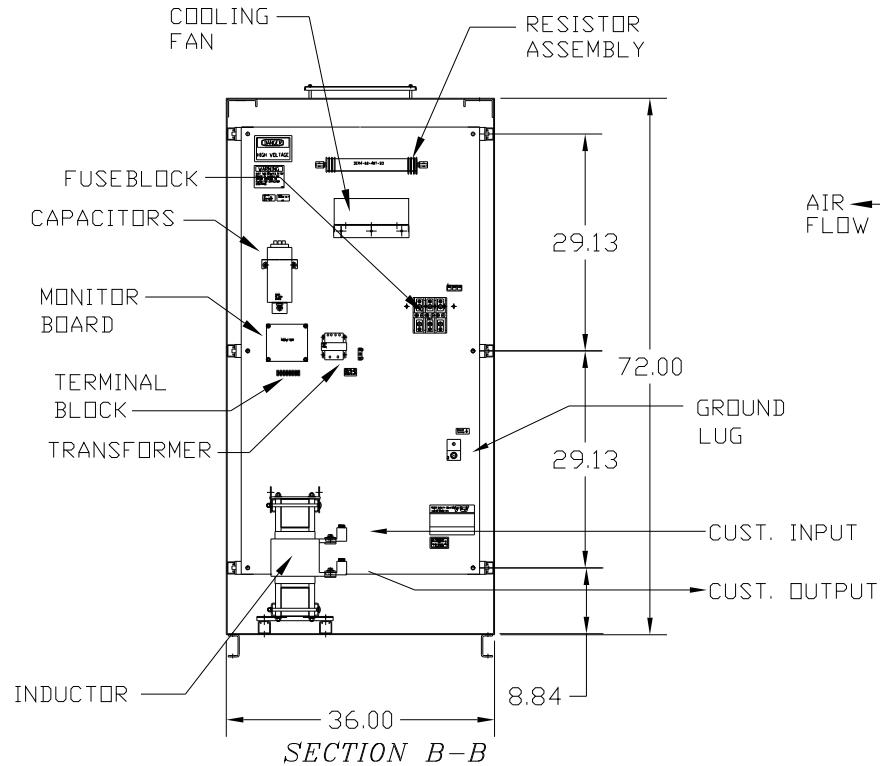
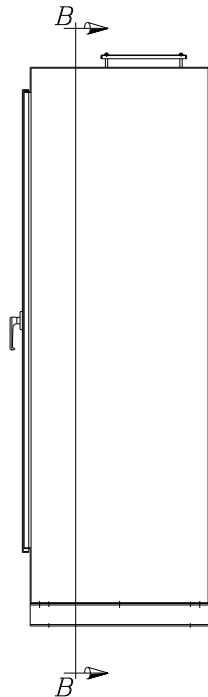
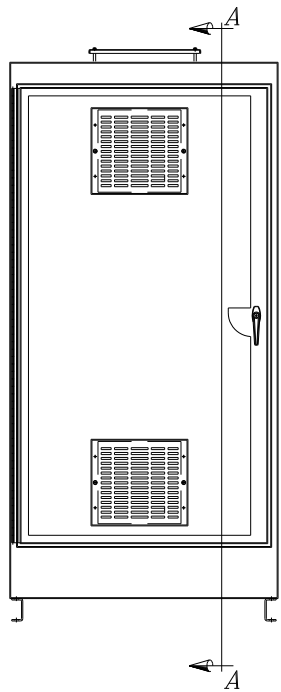


CAT# KMG250CE01
 HP 250 FLA 250
 VOLTS 575/600V
 60 HZ 3 PH

DWG # 102016DG
 ENCLOSURE TYPE 1
 DATE

FOR SCHEMATIC SEE DRAWING P/N 24281-14

CUSTOMER IS RESPONSIBLE FOR PROPER
 INSTALLATION OF ASSEMBLY IN ACCORDANCE
 WITH LOCAL AND NATIONAL CODES.



SECTION A-A

CAT# KMG250CE01

GROUND LUG
 WIRE RANGE: (1)600MCM-#4 AWG
 (2)250MCM-1/0 AWG
 TORQUE: 500 LB-IN

LINE CONNECTIONS
 WIRE RANGE: (1)600MCM-#4 AWG
 (2)250MCM-1/0 AWG
 TORQUE: 500 LB-IN

				TOLERANCES (EXCEPT AS NOTED)		7878 N. 86th STREET MILWAUKEE, WI 53224		
				DECIMAL				
				.XX ±.01		SINEWAVE FILTER-ENCLOSED 250 HP, 250 AMP, 600 V.		
				.XXX±.005				
				FRACTIONAL ± 1/32				
				ANGULAR ± 1/2°		DRN BY	DATE	DWG. NO.
						RJC	1/26/03	B 102016DG
NO	REVISION	DATE	BY			SCALE	APRVD.	SHT. 1 of 1