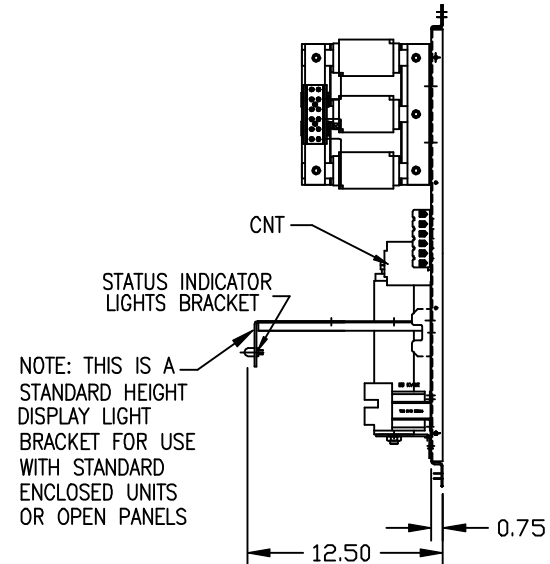


PB—POWER INPUT BLOCK:
 WIRE RANGE—#18 TO #4 AWG.
 TIGHTENING TORQUE 20 IN-LB.



NOTE: THIS IS A
 STANDARD HEIGHT
 DISPLAY LIGHT
 BRACKET FOR USE
 WITH STANDARD
 ENCLOSED UNITS
 OR OPEN PANELS

SEE 21579-1 FOR WIRING CONNECTIONS
 SEE 21725-1 FOR SCHEMATIC


CUSTOMER IS RESPONSIBLE FOR PROPER
 COOLING OF FILTER COMPONENTS.
 CAPACITORS MAXIMUM AMBIENT 50°C

CUSTOMER IS RESPONSIBLE FOR INSTALLATION
 TO MEET ALL NATIONAL AND LOCAL ELECTRICAL CODES.

UNIT SPECIFICATIONS:					
KVAR	HARMONIC	VOLT	HZ	PHASE	HP
10	5TH	480	60	3	30
ENCLOSURE		WHITE OPEN PANEL			
		INDICATOR LIGHTS			
APPROX.WT. LBS.		95			

TRAP FILTER FUSING Fu1j2j3
 XFMR. Fu4,6 Fu5

SYMBOL	TCI PART NUMBER
LR	KLR45CTB
TR	KTR10A65
CAP	16448
XFMR.	23891
Fu1j2j3	11307
Fu4,6	13180
Fu5	13364
CNT	12434

				TOLERANCES (EXCEPT AS NOTED) DECIMAL	 7878 N. 86th STREET MILWAUKEE, WI 53224
				.XX ± .03	
				.XXX ± .01	
				FRACTIONAL ± 1/16	TCI, KH010A6L5B30, OPEN HARMONIC FILTER
				ANGULAR ± 1/2°	
B	2152, ADD XFMR FBLK	02/14/02	DSW	DRN. BY	DSW
NO	REVISION	DATE	BY	SCALE	1/8"=1'
				DATE	03/11/99
				APRVD.	B
				DWG. NO.	100470DG
				SHT. 1	of 1