

| CATALOG NO | VOLTAGE | NEC MOTOR HP | NEC MOTOR CURRENT | WATTS LOSS | APPROX. WEIGHT-LBS |
|------------|---------|--------------|-------------------|------------|--------------------|
| KDRULJ23L | 208/240 | 150 | 396 | 401 | 80 |

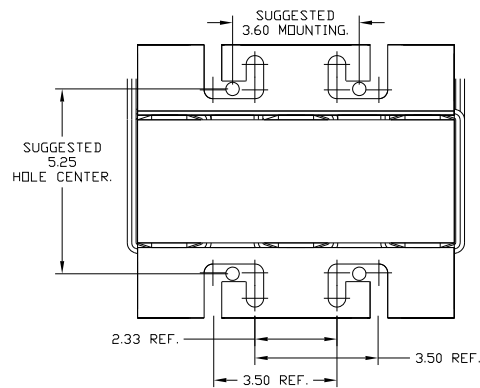
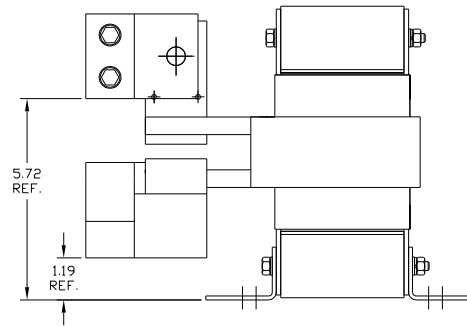
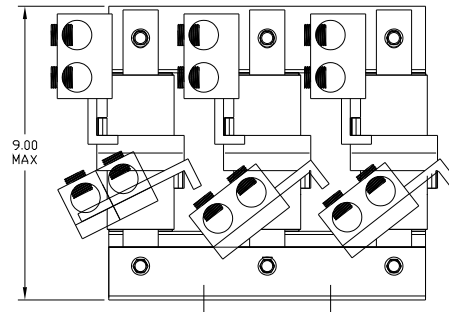
LUG WIRE RANGE TWO 350MCM-4, AL. OR CU.
FOR REACTOR.

TIGHTENING TORQUE. 275 LB-IN

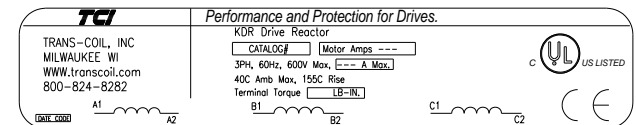
NOTE 1: WATTS LOSS WILL VARY DUE TO FUNDAMENTAL FREQUENCY, CARRIER FREQUENCY AND OTHER SYSTEM CHARACTERISTICS.

KDR DRIVE REACTORS COMPLY WITH THE THERMAL AND ALTITUDE STANDARDS SET FORTH BY NEMA ST20-1992..

NEC MOTOR CURRENTS SHOWN IN THE 208/240 VOLT CHART ARE BASED ON HORSEPOWER AT 208 VOLT. 575/600 VOLT CHART USE THE 575 VOLT CURRENT RATING.



NOTE: ROTATE AS NEEDED TO MEET .50 CLEARANCE BETWEEN TERMINAL OR LUGS (PHASE TO PHASE). ALSO .50 CLEARANCE FROM TERMINALS OR LUGS TO GROUNDING SURFACE.



| | | | |
|-----------|------------|-------------|-------|
| STRIP 1.8 | 3.50 STACK | HI-PDT VOLT | VAC |
| | | 2650 | 468-2 |

| TOLERANCES (EXCEPT AS NOTED) | | TCI 7878 N. 86th STREET MILWAUKEE, WI 53224 | |
|------------------------------|-------------|---|-------------------------|
| DECIMAL | .XX ± .01 | KDRUL OPEN (FRAME J) KDR DRIVE REACTOR | |
| FRACTIONAL | .XXX ± .005 | | |
| ANGULAR | ± 1/32 | DRN BY | DATE 5/04/04 |
| SCALE | TO FIT | APPRV | DWG NO. KDRULOPEN-77 DG |
| NO | REVISION | DATE | BY |
| | | | |