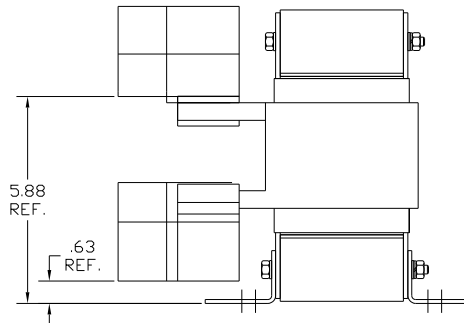
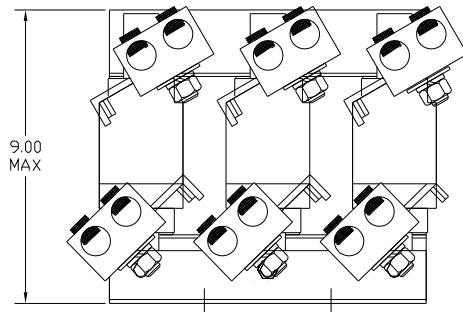


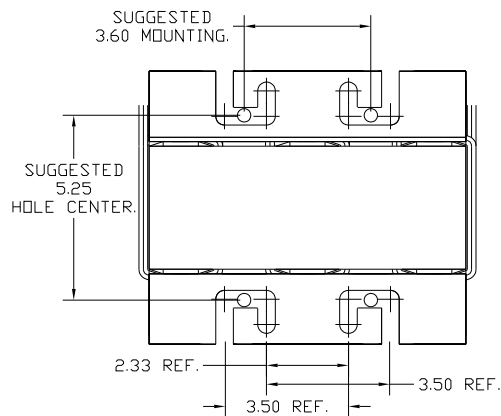
CATALOG NO	VOLTAGE	NEC MOTOR HP	NEC MOTOR CURRENT	WATTS LOSS	APPROX. WEIGHT-LBS
KDRULJ24L	208/240	200	528	442	80
KDRULJ21H	208/240	200	528	516	80
KDRULJ2L	480	350	414	465	80
KDRULJ1L	480	400	477	470	80

LUG WIRE RANGE TWO 600MCM-2, AL. OR CU.  
FOR REACTOR.  
TIGHTENING TORQUE. 500 LB-IN



NOTE 1: WATTS LOSS WILL VARY DUE TO FUNDAMENTAL FREQUENCY, CARRIER FREQUENCY AND OTHER SYSTEM CHARACTERISTICS.  
KDR DRIVE REACTORS COMPLY WITH THE THERMAL AND ALTITUDE STANDARDS SET FORTH BY NEMA ST20-1992..

NEC MOTOR CURRENTS SHOWN IN THE 208/240 VOLT CHART ARE BASED ON HORSEPOWER AT 208 VOLT. 575/600 VOLT CHART USE THE 575 VOLT CURRENT RATING.



NOTE: LUGS ROTATED TO MEET CLEARANCE (PHASE TO PHASE), AND TO MEET CLEARANCE FROM LUGS TO GROUNDING SURFACE.

<b>TCI</b> TRANS-COIL, INC MILWAUKEE WI WWW.transcoil.com 800-824-8282	<b>Performance and Protection for Drives.</b> KDR Drive Reactor <input type="checkbox"/> CHALCO <input type="checkbox"/> Motor Amps --- 3PH, 60Hz, 600V Max, <input type="checkbox"/> A (MGL) 40C Amb Max, 155C Rise Terminal Torque <input type="checkbox"/> LB-IN		
	A1  A2	B1  B2	

				TOLERANCES (EXCEPT AS NOTED) DECIMAL .XX ± .01 .XXX ± .005 FRACTIONAL ± 1/32 ANGULAR ± 1/2°		7878 N. 86th STREET MILWAUKEE, WI 53224	
				KDRUL OPEN (FRAME J) KDR DRIVE REACTOR			
NO	REVISION	DATE	BY	DRN BY	DATE	DWG NO.	
				DSW	5/04/04	KDRULOPEN-21.DWG	
				SCALE	APPROV		SHT. 1 OF 1
				TO FIT			