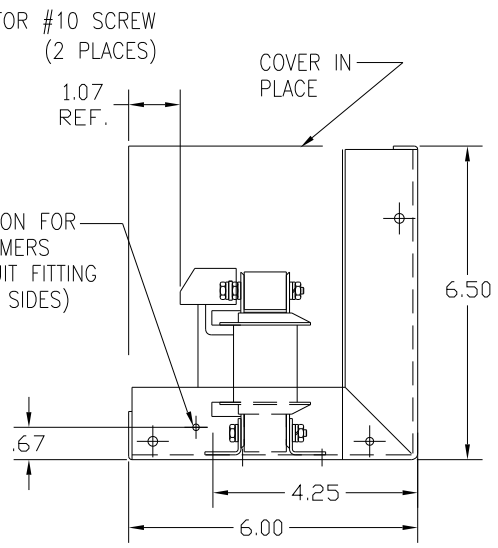
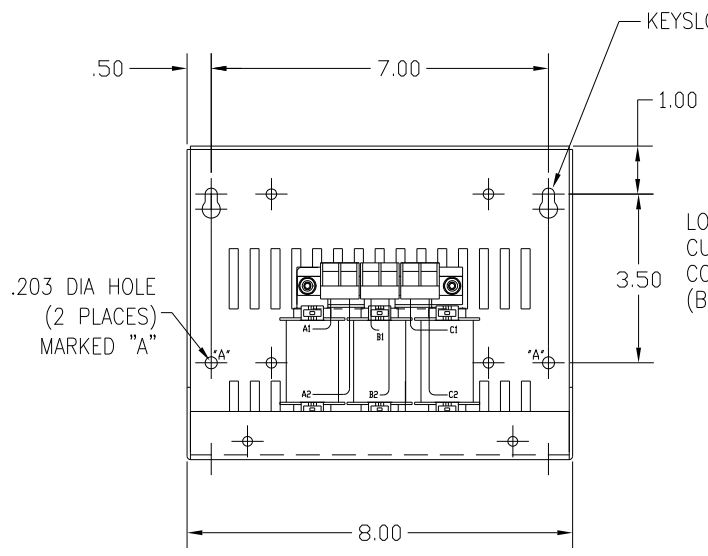
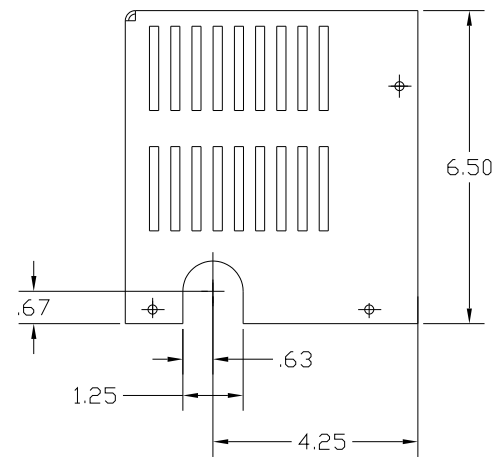
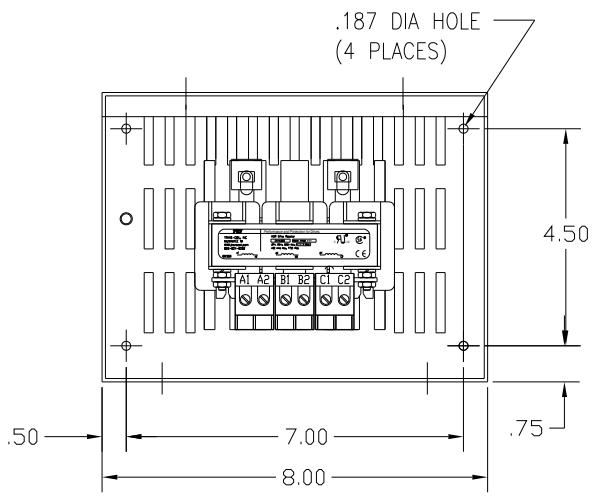


**TCI** PERFORMANCE AND PROTECTION FOR DRIVES  
 TRANS-COL, INC. MILWAUKEE, WI WWW.transcol.com 800-824-8282  
 KDR Drive Reactor  
 CATALOG # MOTOR HP AMPS  
 3PH, 60Hz, 600V Max, E-----A Wdg.  
 40C Amb Max, 115C Rise

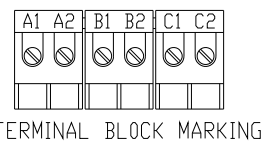
ENCLOSURE LABEL PLACED ON FRONT COVER



CATALOG NO	VOLTAGE	NEC MOTOR HP	NEC MOTOR CURRENT	WATTS LOSS	APPROX. WEIGHT-LBS	TERMINAL BLOCK TORQUE: (LB-IN)
KDRA54LC1	208/240	0.5	2.40	7	8	10
KDRA53LC1	208/240	0.75	3.50	12	8	10
KDRA25LC1	208/240	1.0	4.60	11	8	10
KDRA26LC1	208/240	1.5	6.60	18	8	10
KDRA27LC1	208/240	2.0	7.50	21	8	10
KDRA28LC1	208/240	3.0	10.6	29	8	10
KDRA54HC1	208/240	0.5	2.40	14	8	10
KDRA53HC1	208/240	0.75	3.50	16.8	8	10
KDRA25HC1	208/240	1.0	4.60	23.6	8	10
KDRA27HC1	208/240	1.5	6.60	30.6	8	10
KDRA26HC1	208/240	2.0	7.50	30.5	8	10
KDRA28HC1	208/240	3.0	10.6	43.1	8	10

KDRA55LC1	575/600	0.5	0.90	6	8	10
KDRA56LC1	575/600	0.75	1.30	9.3	8	10
KDRA50LC1	575/600	1.0	1.70	12	8	10
KDRA51LC1	575/600	1.5	2.40	19	8	10
KDRA46LC1	575/600	2.0	2.70	22	8	10
KDRA52LC1	575/600	3.0	3.90	23.3	8	10
KDRA47LC1	575/600	5.0	6.10	34.7	8	10
KDRA48LC1	575/600	7.50	9.0	42.9	8	10
KDRA49LC1	575/600	10.0	11.0	43.8	8	10
KDRA55HC1	575/600	0.5	0.90	9	8	10
KDRA52HC1	575/600	0.75	1.30	13	8	10
KDRA50HC1	575/600	1.0	1.70	17	8	10
KDRA51HC1	575/600	1.5	2.40	26	8	10
KDRA43HC1	575/600	2.0	2.70	24	8	10
KDRA44HC1	575/600	3.0	3.90	35	8	10
KDRA45HC1	575/600	5.0	6.10	48	8	10

NEC MOTOR CURRENTS SHOWN IN THE 208/240 VOLT CHART ARE BASED ON HORSE POWERS AT 208 VOLT. 575/600 VOLT CHART USE THE 575 VOLT CURRENT RATING.



CUSTOMER IS RESPONSIBLE FOR INSTALLATION TO MEET ALL NATIONAL AND LOCAL ELECTRICAL CODES.

				TOLERANCES (EXCEPT AS NOTED)		7878 N. 86th STREET MILWAUKEE, WI 53224	
				DECIMAL			
				.XX ± .03		KDR (FRAME A) ENCLOSED WIDE RANGE REACTOR DRN BY DSW DATE 2/25/03 DWG NO. KDR-31DG SCALE 1:2 APPROV	
				.XXX ± .01			
				FRACTIONAL ± 1/32			
				ANGULAR ± 1/2°			
NO	REVISION	DATE	BY				