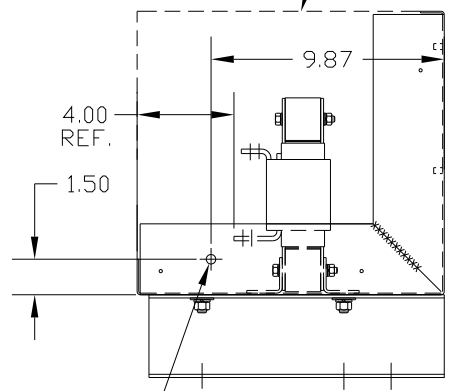
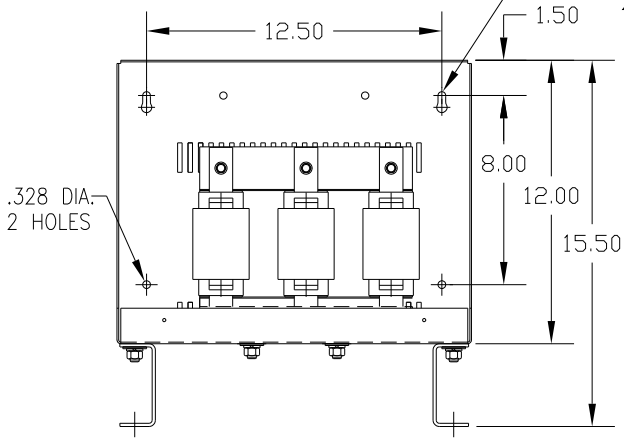


KEYSLOTS FOR 1/4-20 SCREWS 2 PLACES

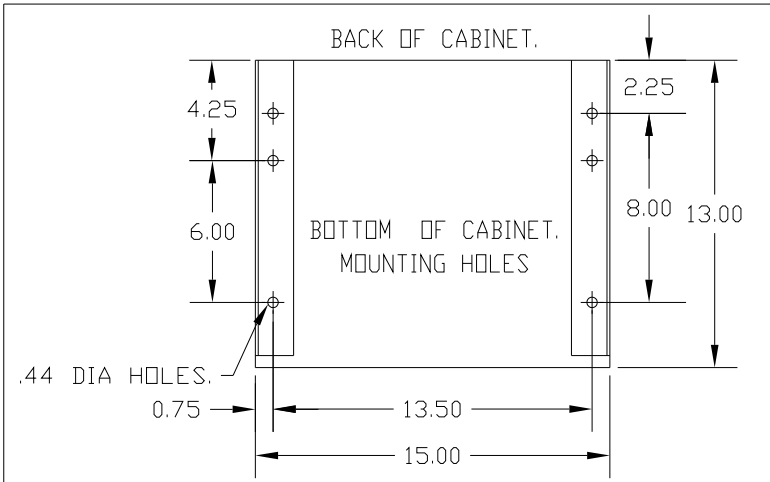


COVER IN PLACE

LOCATION FOR CUSTOMERS CONDUIT FITTING (BOTH SIDES)

CATALOG NO	VOLTAGE	NEC MOTOR HP	NEC MOTOR CURRENT	WATTS LOSS	APPROX. WEIGHT-LBS
KDRH3LC4	480	100	124	225	75
KDRH2LC4	480	125	156	254	75
KDRH1LC4	480	150	180	299	75
KDRH2HC4	480	75	124	362	80
KDRH1PC4	480	100	124	NOTE 1:	75
KDRH31PC4	575	125	125	NOTE 1:	75

NOTE 1: WATTS LOSS WILL VARY DUE TO FUNDAMENTAL FREQUENCY, CARRIER FREQUENCY AND OTHER SYSTEM CHARACTERISTICS. KDR DRIVE REACTORS COMPLY WITH THE THERMAL AND ALTITUDE STANDARDS SET FORTH BY NEMA ST20-1992..



<p>TRANS-COIL, INC MILWAUKEE WI WWW.TRANSCOIL.COM 800-824-8282</p>	<p>PERFORMANCE AND PROTECTION FOR DRIVES.</p> <p>KDR Drive Reactor</p>
	<p>CATALOG # MOTOR HP AMPS</p> <p>3PH, 60Hz, 600V Max. [--- A Max.] 40C Amb Max, 115C Rise</p>

ENCLOSURE LABEL PLACED ON FRONT COVER.

CUSTOMER IS RESPONSIBLE FOR INSTALLATION TO MEET ALL NATIONAL AND LOCAL ELECTRICAL CODES.

NO	REVISION	DATE	BY	TOLERANCES (EXCEPT AS NOTED)
D	REMOVE COIL MARKINGS	01/03/05	DSW	.XX ±.03
C	ADD H3L	1/23/04	DSW	.XXX±.01
B	2235 REACTOR MTG	09/15/03	DSW	FRACTIONAL ± 1/32
A	2128 ADD H1H	10/12/01	DSW	ANGULAR ± 1/2°

<p>7878 N. 86th STREET MILWAUKEE, WI 53224</p>	<p>KDR ASSEMBLY, "H" FRAME "C4" ENCL., INPUT & OUTPUT</p>
	<p>DRN BY RJC DATE 5/29/01 DWG. NO. B KDR-13DG</p> <p>SCALE 3/16"=1" APPRVD. SHT. 1 OF 1</p>