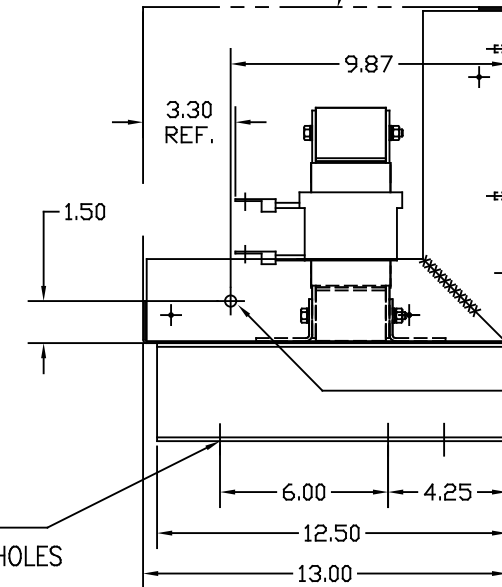


KEYSLOTS FOR 1/4-20 SCREWS 2 PLACES
COVER IN PLACE



LOCATION FOR CUSTOMERS CONDUIT FITTING (BOTH SIDES)

.328 DIA. 2 HOLES

.44 DIA. 4 MTG. HOLES

CUSTOMER IS RESPONSIBLE FOR INSTALLATION TO MEET ALL NATIONAL AND LOCAL ELECTRICAL CODES.

VOLTS	NEC MOTOR HP	CATALOG NO	__AMPS(A)	APPROX WT-LBS	WATTS LOSS	TERMINAL RING HOLE SIZE
690V	60-75	KLR80ERL4V	80	84	178	.38 DIA HOLE

TOLERANCES EXCEPT AS NOTED			7878 N. 86th STREET MILWAUKEE, WI 53224 KLR SERIES 3 PH REACTOR 690V (FRAME G) ENCLOSED
DECIMAL			
.XX ±.03 .XXX ±.010			
FRACTIONAL ± 1/16			
ANGULAR ± 1/2°			DRN BY DSW DATE 03/30/07 DWG NO. KLR80ERL4VDG SCALE TO FIT APPR'D SHT. 1 OF 1
NO	REVISION	DATE	BY