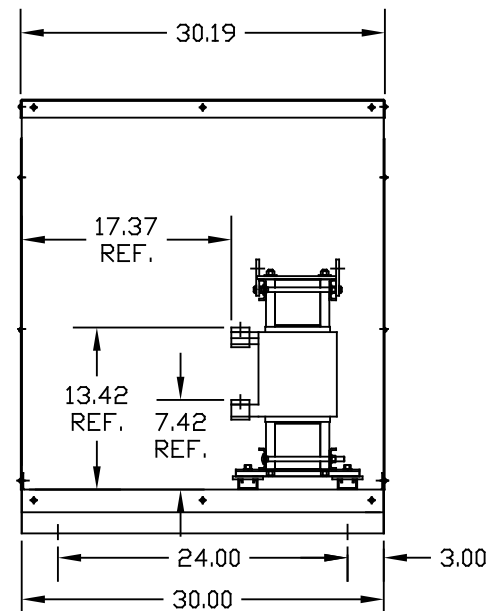


.50 DIA MOUNTING HOLES 4 PLACES.



CUSTOMER IS RESPONSIBLE FOR INSTALLATION TO MEET ALL NATIONAL AND LOCAL ELECTRICAL CODES.

VOLTS	NEC MOTOR HP	CATALOG NO	__AMPS(A)	APPROX WT-LBS	WATTS LOSS	TERMINAL HOLE SIZE
690V						
5% Z	700	KLR750ECB7V	750	420	604	.53 DIA HOLE

NO	REVISION	DATE	BY

TOLERANCES (EXCEPT AS NOTED)
DECIMAL
.XX ±.03
.XXX±.010
FRACTIONAL
± 1/16
ANGULAR
± 1/2°

TPC 7878 N. 86th STREET MILWAUKEE, WI 53224

KLR SERIES 3 PH REACTOR 690V (FRAME X) ENCLOSED

DRN. BY DSW DATE 03/30/07 DWG. NO. KLR750ECB7VDG
 SCALE TO FIT APPRVD. SHT.1 of 1