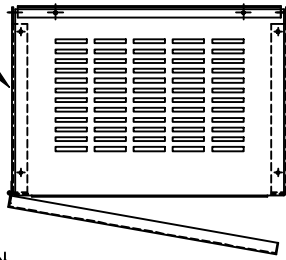


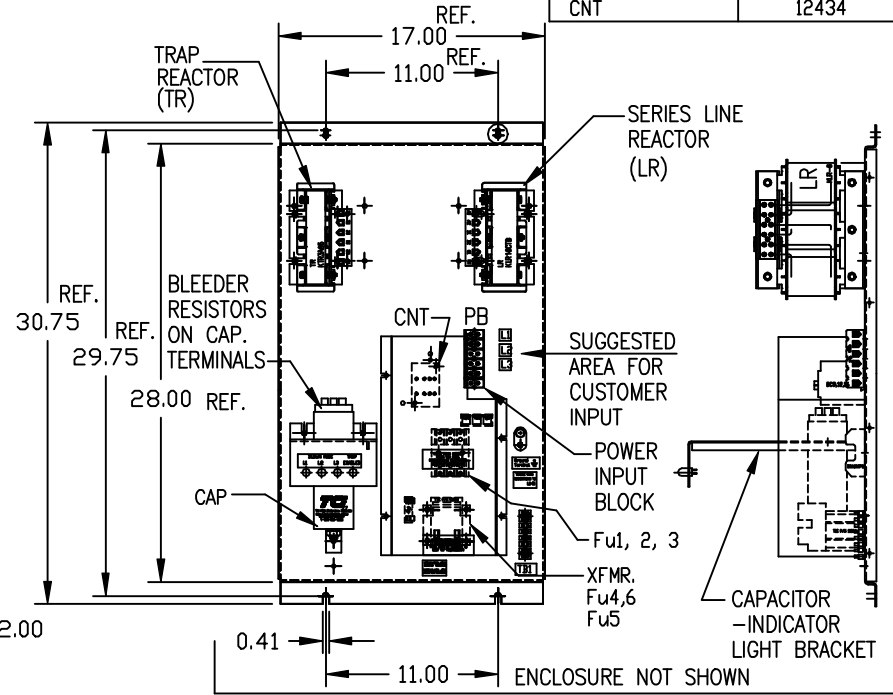
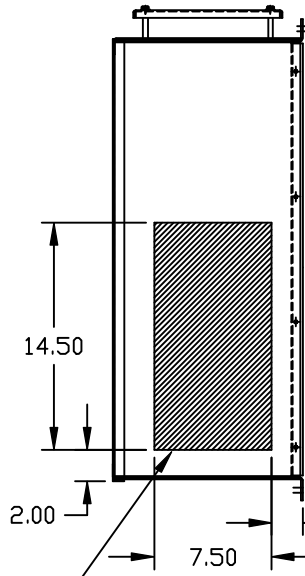
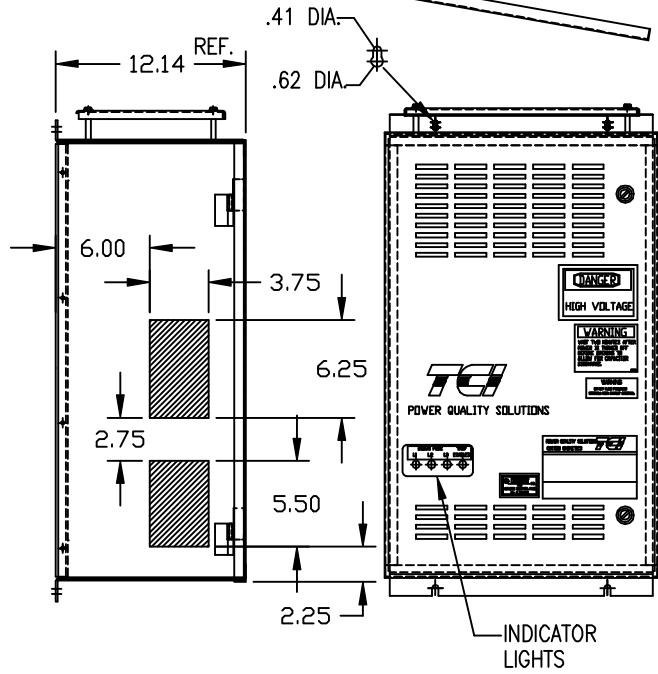
REMOVEABLE DOOR, SIDE PLATES AND VENTED TOP AND UNVENTED BOTTOM PANELS.



PB-POWER INPUT BLOCK:
WIRE RANGE-#18 TO #4 AWG.
TIGHTENING TORQUE 20 IN-LB.

UNIT SPECIFICATIONS:					
KVAR	HARMONIC	VOLT	HZ	PHASE	HP
3	5TH	480	60	3	10
ENCLOSURE		NEMA 1 - BEIGE COLOR			
		W/INDICATOR LIGHTS			
OPTIONS					
APPROX.WT. LBS.		100			

SYMBOL	TCI PART NUMBER
LR	KLR16CTB
TR	KTR3A65
CAP. (5 KVAR)	16446
XFMR.	23891
Fu1, 2, 3	11262
Fu4,6	13180
Fu5	13364
CNT	12434



HATCHED AREAS ARE SUGGESTED CUSTOMER WIRE AND EXIT LOCATIONS (BOTTOM ENTRANCE ALTERNATE-CONSULT TCI)

SEE 21725-1 FOR SCHEMATIC

CUSTOMER IS RESPONSIBLE FOR INSTALLATION TO MEET ALL NATIONAL AND LOCAL ELECTRICAL CODES.

				TOLERANCES (EXCEPT AS NOTED) DECIMAL	TCI 8788 N. 86th STREET MILWAUKEE, WI 53224
				.XX ± .03 .XXX ± .010	
B	2152 ADD XFMR FBLOCK	02/13/02	DSW	FRACTIONAL ± 1/16	TCI, KH003A6L5A10, 480V "FLEXPAC" HARMONIC FILTER
A	RMVD. BOTTOM PLATE	11-15-99	RJC	ANGULAR ± 1/2°	
NO	REVISION	DATE	BY	SCALE 1/8"=1"	DRN BY DSW DATE 3/9/99 DVG. NO. B 100476DG APRVD. SHT.1 OF 1