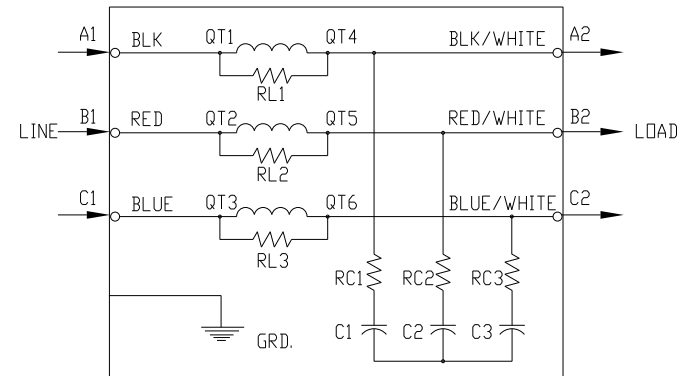
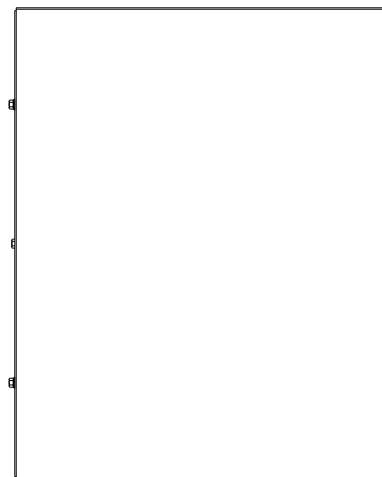
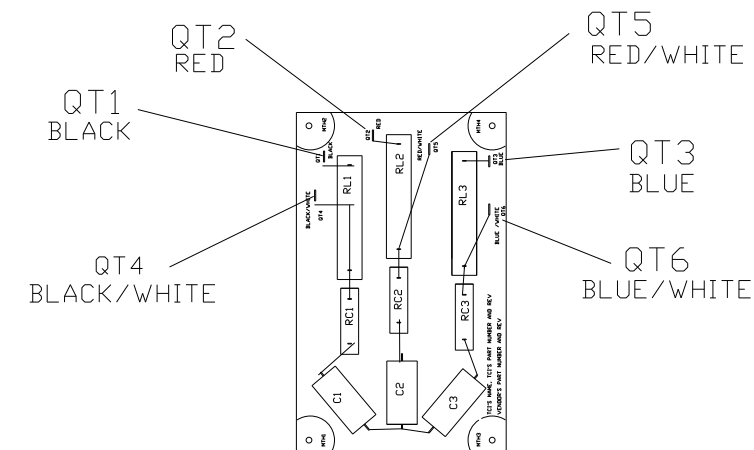


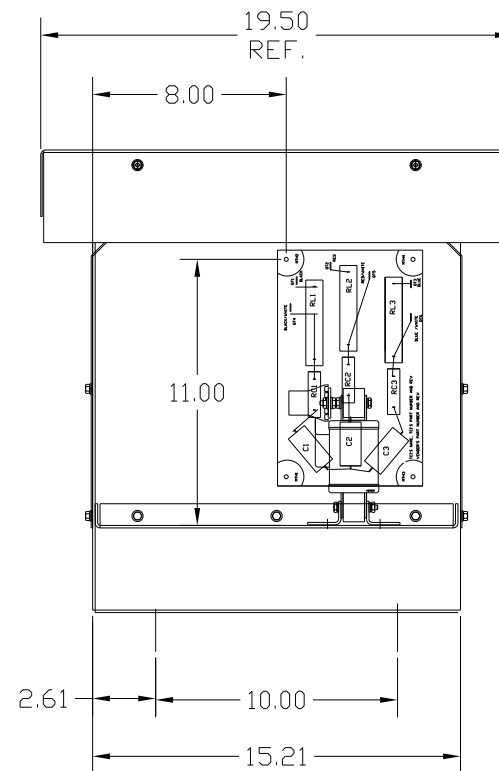
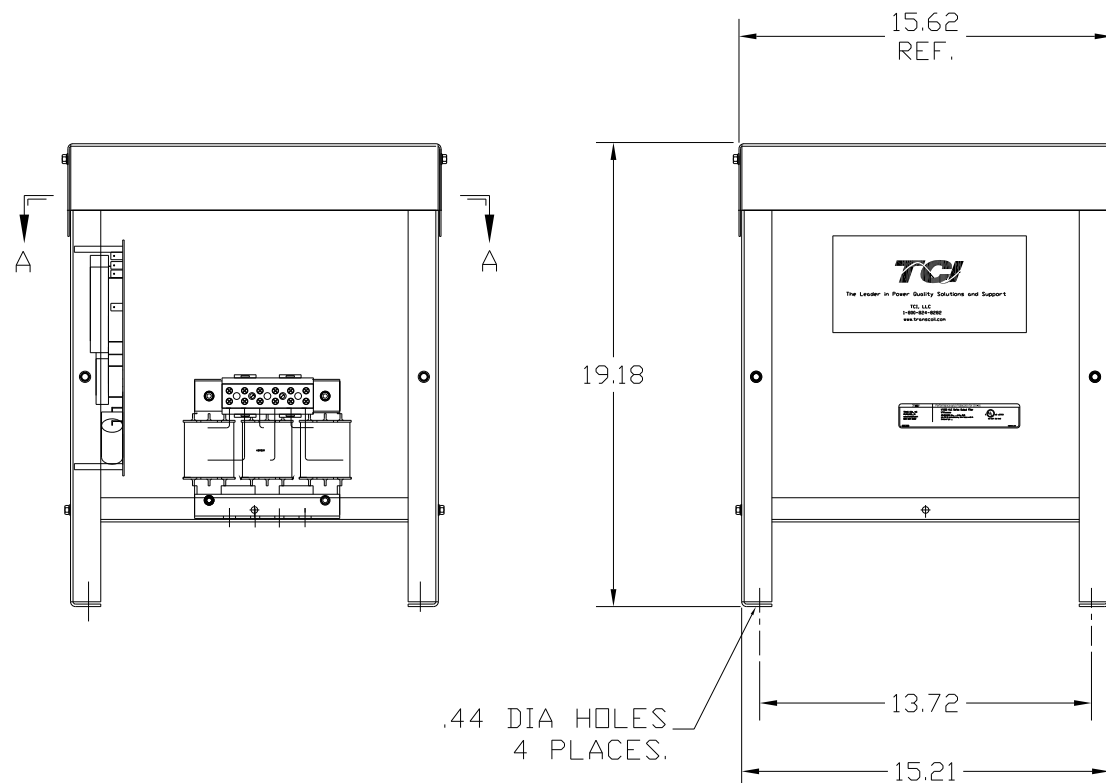
SECTION A-A



SPECIFICATIONS:	
AMP.	55
VOLT	240-600
PHASE	3
HZ	60
WEIGHT, LBS.	56
ENCLOSURE	ENCLOSED, 3R
ENCL., COLOR	PEBBLE GRAY




P.C. BOARD VIEW A-A



FINISH:
 VENDOR - LILLY POWDER COATINGS, INC.
 PRODUCT CODE - 312E
 COLOR - PEBBLE GRAY
 POWDER TYPE - POLYESTER-POLYURETHANE
 PAINT SUITABLE FOR OUTDOOR APPLICATION PER UL TYPE 3R
 AND APPLIED PER A UL ACCEPTED DTVV2 COATING PROGRAM.

CUSTOMER IS RESPONSIBLE FOR INSTALLATION TO MEET ALL NATIONAL AND LOCAL ELECTRICAL CODES.

TERMINAL BLOCK SPECIFICATIONS:
 600 V.
 85 AMP. COPPER
 50 AMP. ALUM.
 WIRE RANGE
 1 AWG (<7&19 STRAND ONLY)
 2 AWG TO 22 AWG.
 TORQUE 35 LB-IN #1-#4 AWG
 30 LB-IN #6-#14 AWG
 25 LB-IN #16-#22 AWG

NO	REVISION	DATE	BY	TOLERANCES (EXCEPT AS NOTED)	 7878 N. 86th STREET MILWAUKEE, WI 53224 V1K55A03 OUTPUT FILTER 55 AMP, 480/3/60, ENCL.,3R
				DECIMAL	
				.XX ± .02	
				.XXX ± .01	
				FRACTIONAL	
				± 1/32	
				ANGULAR	
				± 1/2°	
				DRN. BY RJC	DATE 5/20/10
				SCALE --	APRVD.
					DWG. NO. B 104228DG
					SHT. 1 OF 1