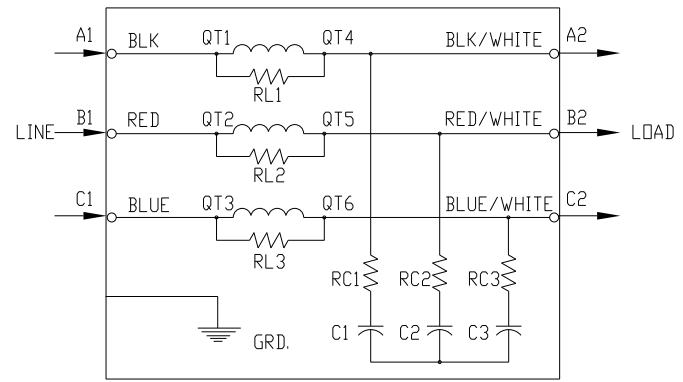
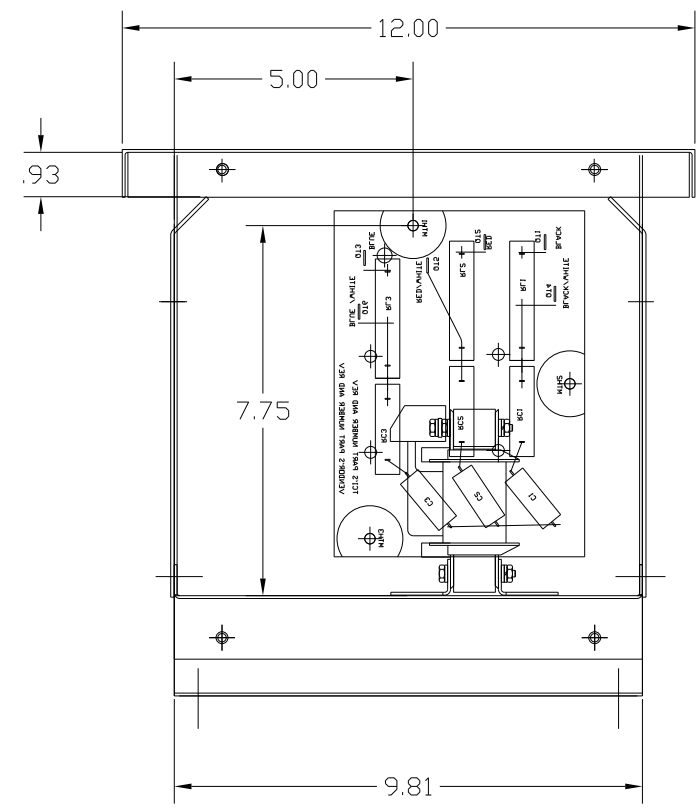
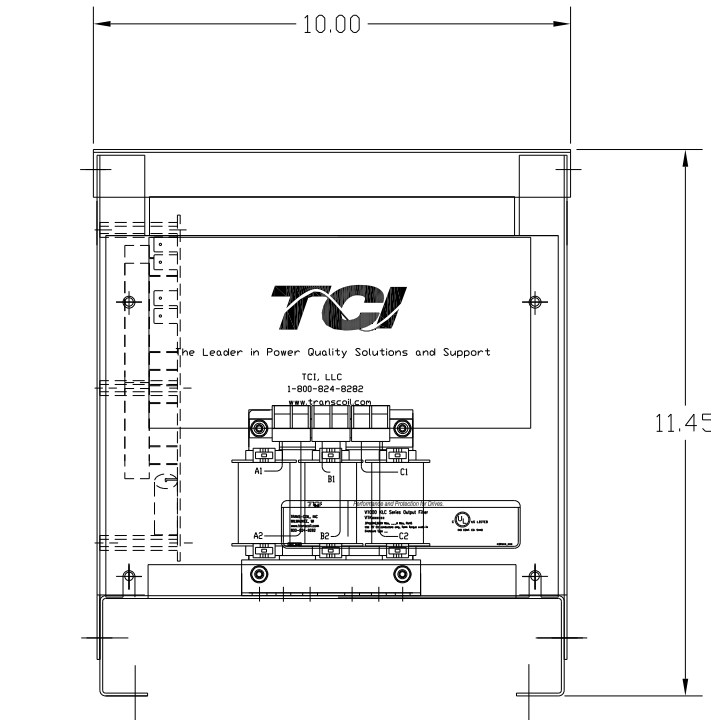
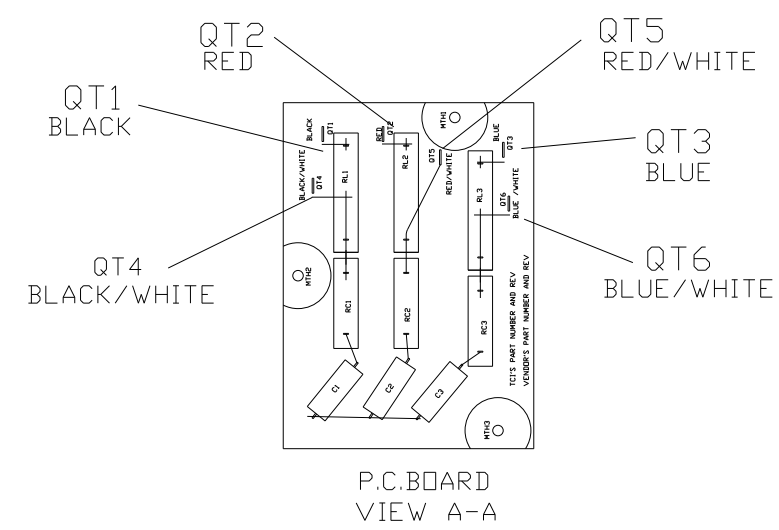


TERMINAL BLOCK SPECIFICATIONS:  
 600 V.  
 20 AMP  
 22-12 AWG  
 TORQUE 10 IN-LBS

.265 DIA HOLES  
 4 PLACES



SPECIFICATIONS:	
AMP.	3
VOLT	240-600
PHASE	3
HZ	60
WEIGHT, LBS.	25
ENCLOSURE	ENCLOSED, 3R
ENCL., COLOR	PEBBLE GRAY



FINISH:  
 VENDOR - LILLY POWDER COATINGS, INC.  
 PRODUCT CODE - 312E  
 COLOR - PEBBLE GRAY  
 POWDER TYPE - POLYESTER-POLYURETHANE  
 PAINT SUITABLE FOR OUTDOOR APPLICATION PER UL TYPE 3R  
 AND APPLIED PER A UL ACCEPTED DTVV2 COATING PROGRAM.

CUSTOMER IS RESPONSIBLE FOR INSTALLATION TO  
 MEET ALL NATIONAL AND LOCAL ELECTRICAL CODES.

NO	REVISION	DATE	BY

TOLERANCES (EXCEPT AS NOTED)
DECIMAL
.XX ± .02
.XXX ± .01
FRACTIONAL
± 1/32
ANGULAR
± 1/2°

**TCI** 7878 N. 86th STREET  
 MILWAUKEE, WI 53224

V1K3A03 OUTPUT FILTER  
 3 AMP, 480/3/60, ENCL., 3R

DRN. BY	RJC	DATE	5/20/10	DWG. NO.	104216DG
SCALE	--	APRVD.		B	SHT. 1 OF 1