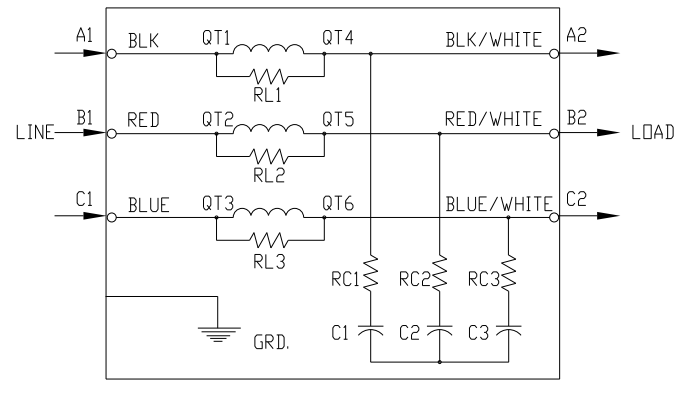
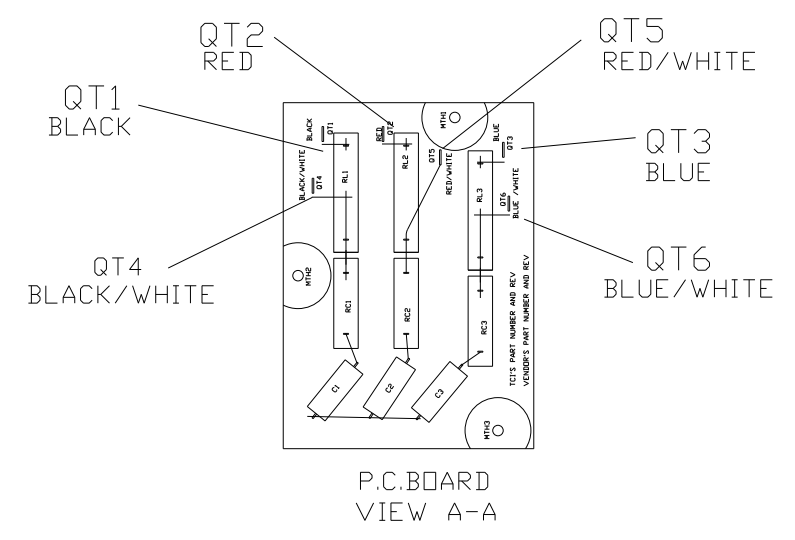
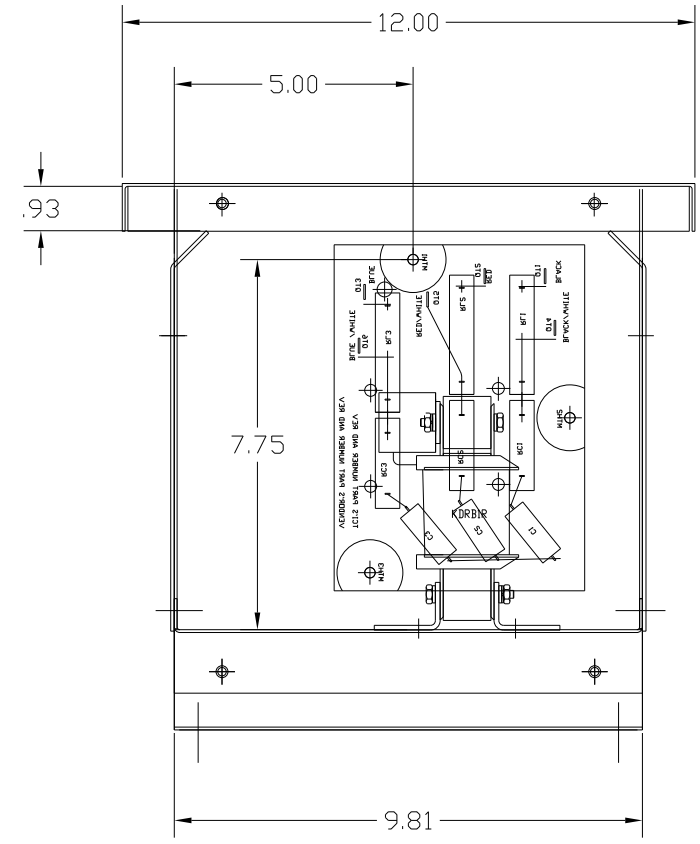
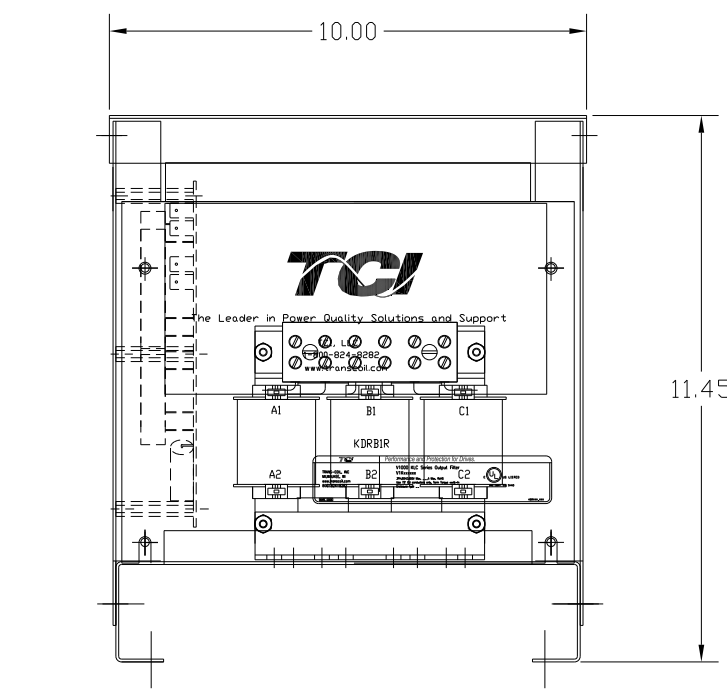


TERMINAL BLOCK SPECIFICATIONS:
 600 V.
 85 AMP
 18-4 AWG
 TORQUE 20 IN-LBS



SPECIFICATIONS:	
AMP.	18
VOLT	240-600
PHASE	3
HZ	60
WEIGHT, LBS.	25
ENCLOSURE	ENCLOSED, 3R
ENCL., COLOR	PEBBLE GRAY



FINISH:
 VENDOR - LILLY POWDER COATINGS, INC.
 PRODUCT CODE - 312E
 COLOR - PEBBLE GRAY
 POWDER TYPE - POLYESTER-POLYURETHANE
 PAINT SUITABLE FOR OUTDOOR APPLICATION PER UL TYPE 3R
 AND APPLIED PER A UL ACCEPTED DTVV2 COATING PROGRAM.

CUSTOMER IS RESPONSIBLE FOR INSTALLATION TO
 MEET ALL NATIONAL AND LOCAL ELECTRICAL CODES.

NO	REVISION	DATE	BY

TOLERANCES (EXCEPT AS NOTED)
DECIMAL
.XX ± .02
.XXX ± .01
FRACTIONAL
± 1/32
ANGULAR
± 1/2°

TCI 7878 N. 86th STREET
 MILWAUKEE, WI 53224

V1K18A03 OUTPUT FILTER
 18 AMP, 480/3/60, ENCL., 3R

DRN. BY	RJC	DATE	5/20/10	DWG. NO.	104222DG
SCALE	--	APRVD.		B	SHT.1 OF 1