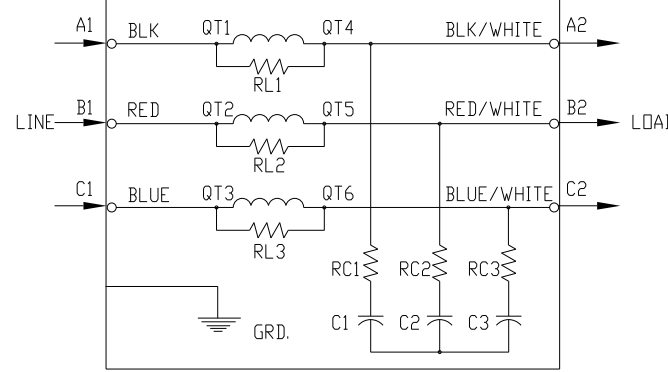
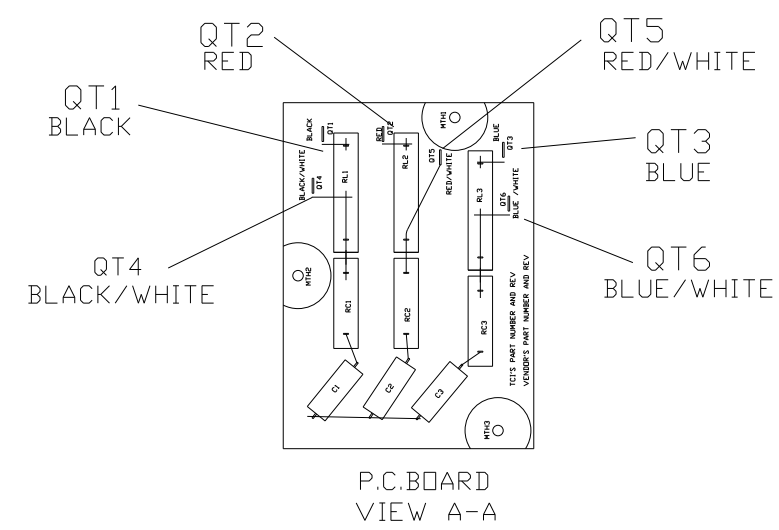
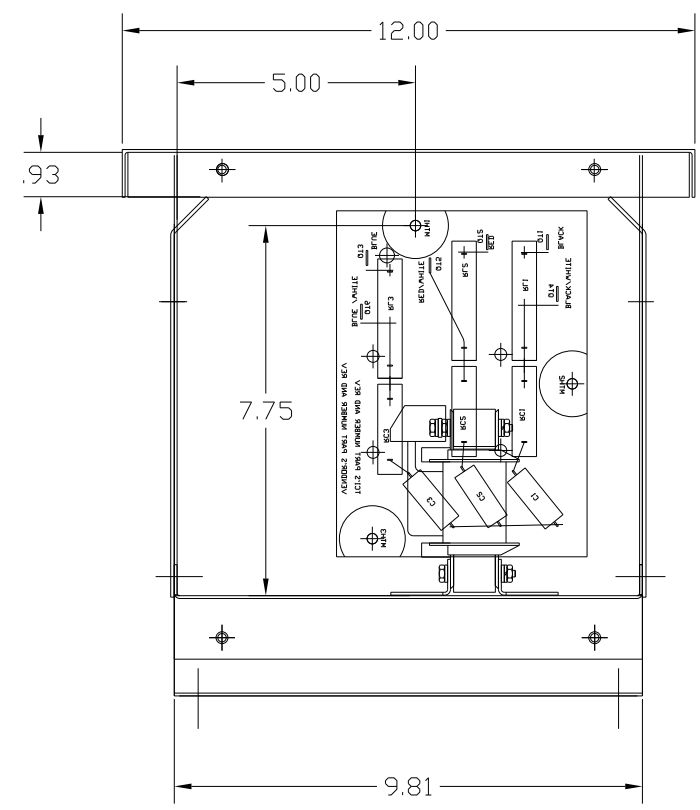
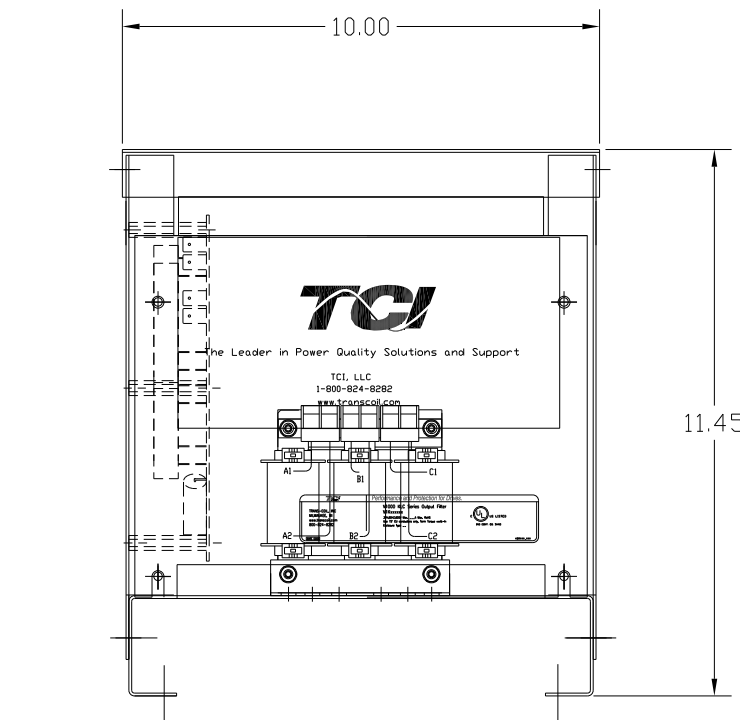


TERMINAL BLOCK SPECIFICATIONS:
 600 V.
 20 AMP
 22-12 AWG
 TORQUE 10 IN-LBS



| SPECIFICATIONS: | |
|-----------------|--------------|
| AMP. | 12 |
| VOLT | 240-600 |
| PHASE | 3 |
| HZ | 60 |
| WEIGHT, LBS. | 25 |
| ENCLOSURE | ENCLOSED, 3R |
| ENCL., COLOR | PEBBLE GRAY |



FINISH:
 VENDOR - LILLY POWDER COATINGS, INC.
 PRODUCT CODE - 312E
 COLOR - PEBBLE GRAY
 POWDER TYPE - POLYESTER-POLYURETHANE
 PAINT SUITABLE FOR OUTDOOR APPLICATION PER UL TYPE 3R
 AND APPLIED PER A UL ACCEPTED DTVV2 COATING PROGRAM.

CUSTOMER IS RESPONSIBLE FOR INSTALLATION TO
 MEET ALL NATIONAL AND LOCAL ELECTRICAL CODES.

| NO | REVISION | DATE | BY |
|----|----------|------|----|
| | | | |

| |
|---------------------------------|
| TOLERANCES (EXCEPT AS NOTED) |
| DECIMAL |
| .XX ± .02 |
| .XXX ± .01 |
| FRACTIONAL |
| ± 1/32 |
| ANGULAR |
| ± 1/2° |

TCI 7878 N. 86th STREET
 MILWAUKEE, WI 53224

V1K12A03 OUTPUT FILTER
 12 AMP, 480/3/60, ENCL., 3R

| | | | | | |
|---------|-----|--------|---------|----------|------------|
| DRN. BY | RJC | DATE | 5/20/10 | DWG. NO. | 104220DG |
| SCALE | -- | APRVD. | | B | SHT.1 OF 1 |