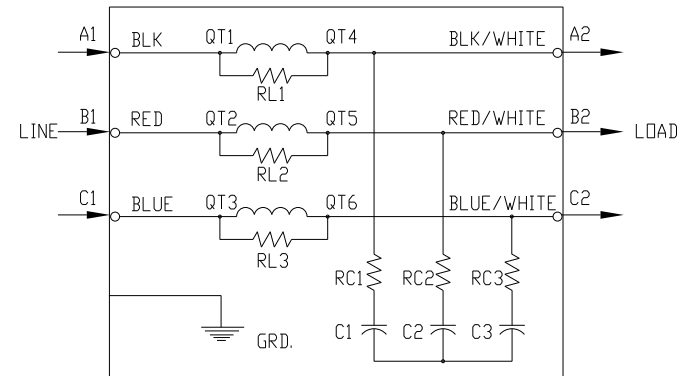
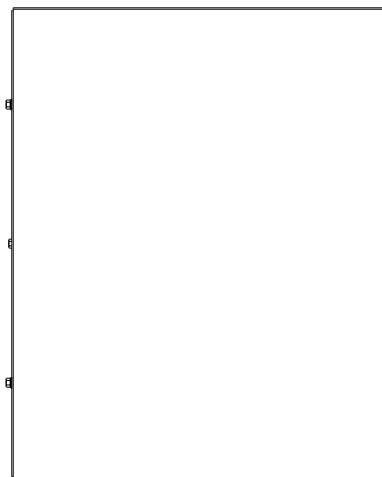
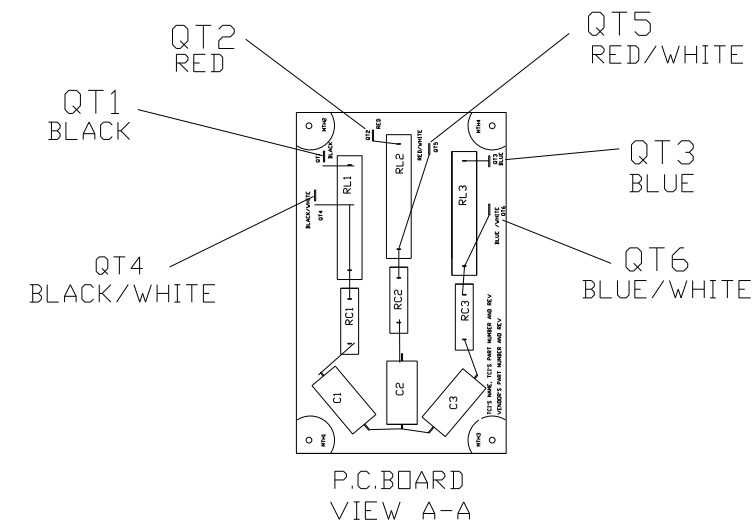


SECTION A-A



SPECIFICATIONS:	
AMP.	55
VOLT	240-600
PHASE	3
HZ	60
WEIGHT, LBS.	56
ENCLOSURE	ENCLOSED, 3R
ENCL., COLOR	PEBBLE GRAY



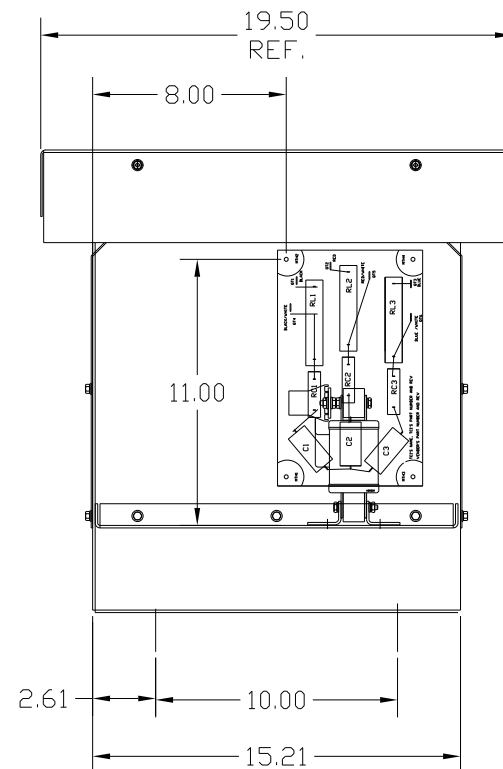
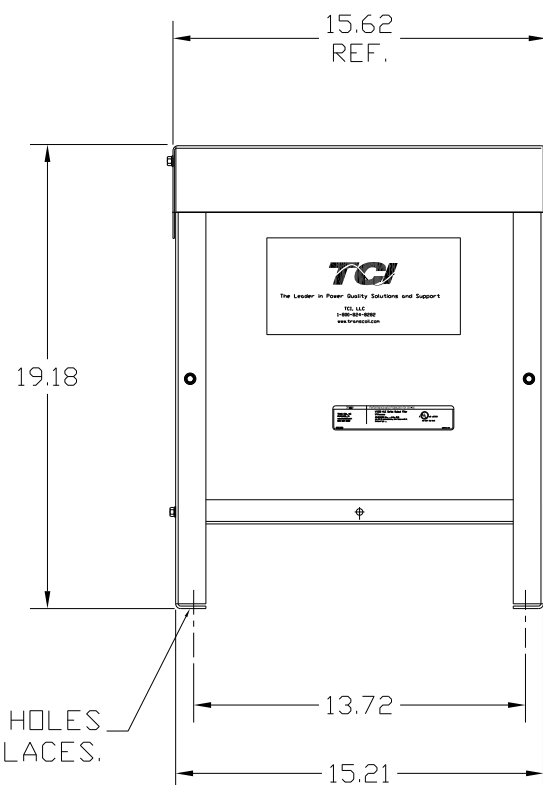
P.C. BOARD VIEW A-A


FINISH:  
 VENDOR - LILLY POWDER COATINGS, INC.  
 PRODUCT CODE - 312E  
 COLOR - PEBBLE GRAY  
 POWDER TYPE - POLYESTER-POLYURETHANE  
 PAINT SUITABLE FOR OUTDOOR APPLICATION PER UL TYPE 3R  
 AND APPLIED PER A UL ACCEPTED DTVV2 COATING PROGRAM.

CUSTOMER IS RESPONSIBLE FOR INSTALLATION TO MEET ALL NATIONAL AND LOCAL ELECTRICAL CODES.

TERMINAL BLOCK SPECIFICATIONS:  
 600 V.  
 85 AMP. COPPER  
 50 AMP. ALUM.  
 WIRE RANGE  
 1 AWG (<7&19 STRAND ONLY)  
 2 AWG TO 22 AWG.  
 TORQUE 35 LB-IN #1-#4 AWG  
 30 LB-IN #6-#14 AWG  
 25 LB-IN #16-#22 AWG

.44 DIA HOLES  
 4 PLACES.



NO	REVISION	DATE	BY	TOLERANCES (EXCEPT AS NOTED)	 7878 N. 86th STREET MILWAUKEE, WI 53224 <b>V1K55A03EX OUTPUT FILTER</b> <b>55 AMP, 480/3/60, ENCL.,3R</b>
				DECIMAL	
				.XX ± .02	
				.XXX ± .01	
				FRACTIONAL	
				± 1/32	
				ANGULAR	
				± 1/2°	
				DRN. BY <b>RJC</b>	DATE <b>6/19/10</b>
				SCALE <b>--</b>	APRVD.
					DWG. NO. <b>B 104254DG</b>
					SHT. 1 OF 1