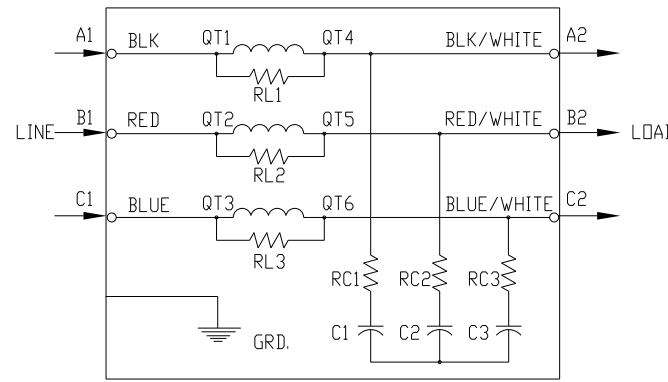
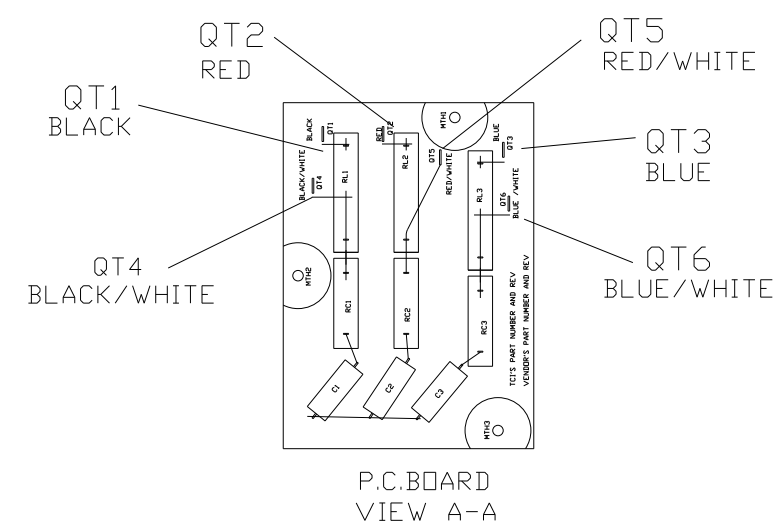
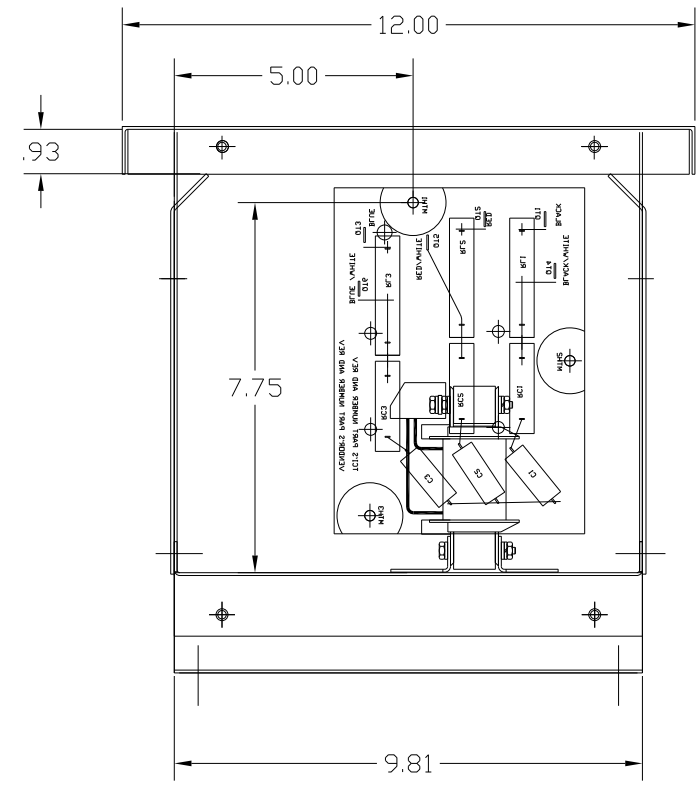
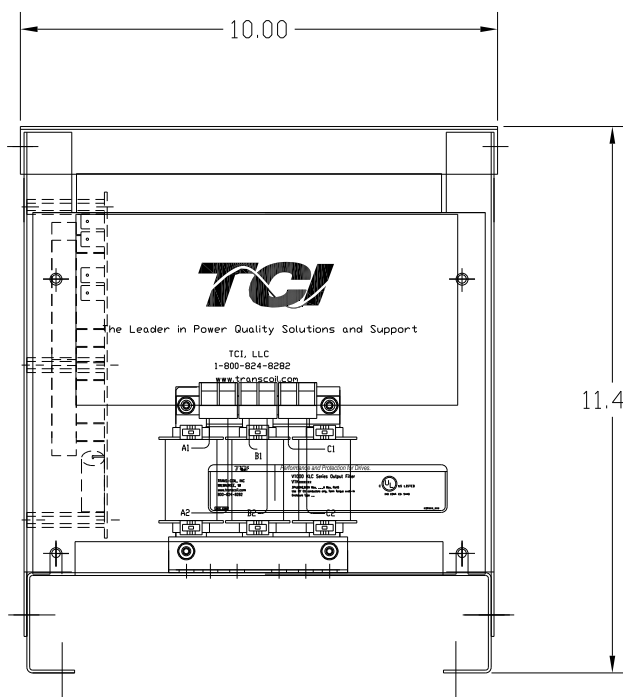


8.81  
 8.25  
 .265 DIA HOLES  
 4 PLACES

TERMINAL BLOCK SPECIFICATIONS:  
 600 V.  
 20 AMP  
 22-12 AWG  
 TORQUE 10 IN-LBS




SPECIFICATIONS:	
AMP.	2
VOLT	240-600
PHASE	3
HZ	60
WEIGHT, LBS.	25
ENCLOSURE	ENCLOSED, 3R
ENCL., COLOR	PEBBLE GRAY



FINISH:  
 VENDOR - LILLY POWDER COATINGS, INC.  
 PRODUCT CODE - 312E  
 COLOR - PEBBLE GRAY  
 POWDER TYPE - POLYESTER-POLYURETHANE  
 PAINT SUITABLE FOR OUTDOOR APPLICATION PER UL TYPE 3R  
 AND APPLIED PER A UL ACCEPTED DTVV2 COATING PROGRAM.

CUSTOMER IS RESPONSIBLE FOR INSTALLATION TO  
 MEET ALL NATIONAL AND LOCAL ELECTRICAL CODES.

				TOLERANCES (EXCEPT AS NOTED)	 7878 N. 86th STREET MILWAUKEE, WI 53224
				DECIMAL	
				.XX ± .02	V1K2A03EX OUTPUT FILTER 2 AMP, 480/3/60, ENCL., 3R
				.XXX ± .01	
				FRACTIONAL ± 1/32	
				ANGULAR ± 1/2°	DRN. BY <b>RJC</b> DATE <b>5/20/10</b> DWG. NO. <b>104241DG</b> SCALE --    APRVD. <b>B</b>
NO	REVISION	DATE	BY		SHT.1 OF 1