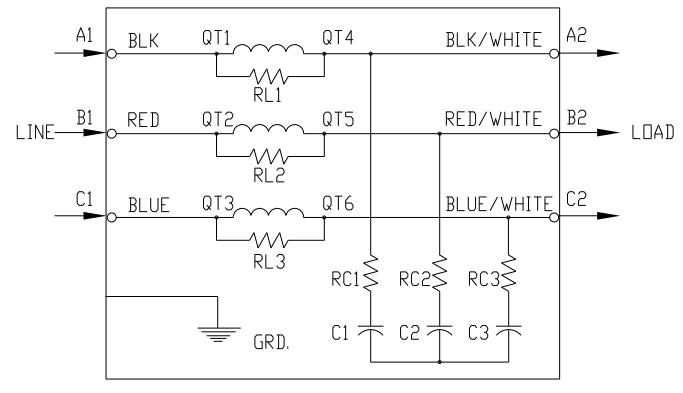
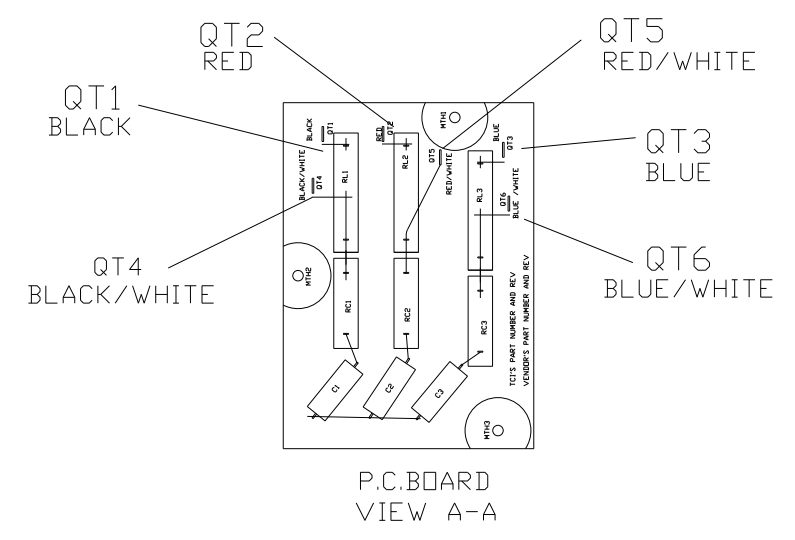
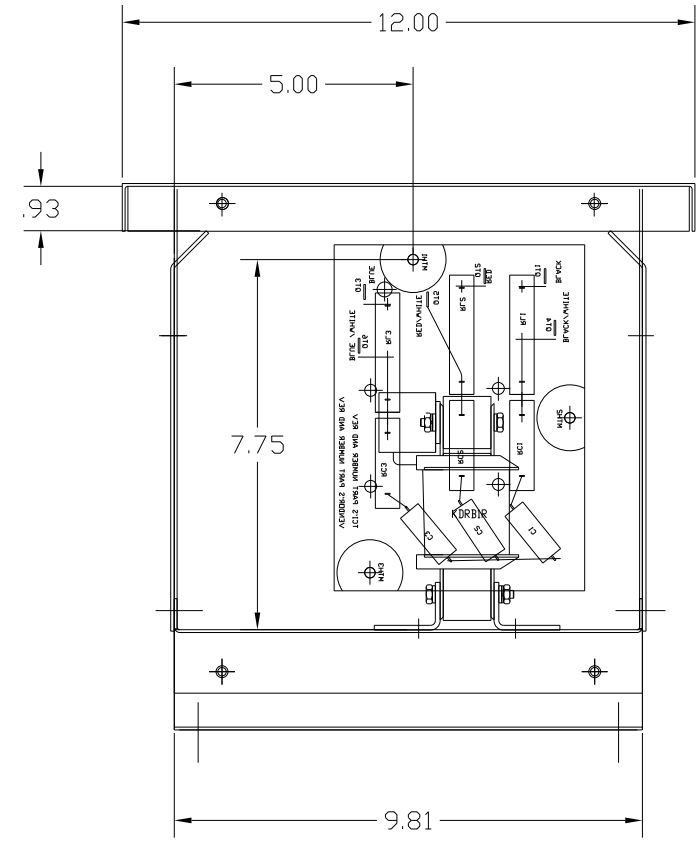
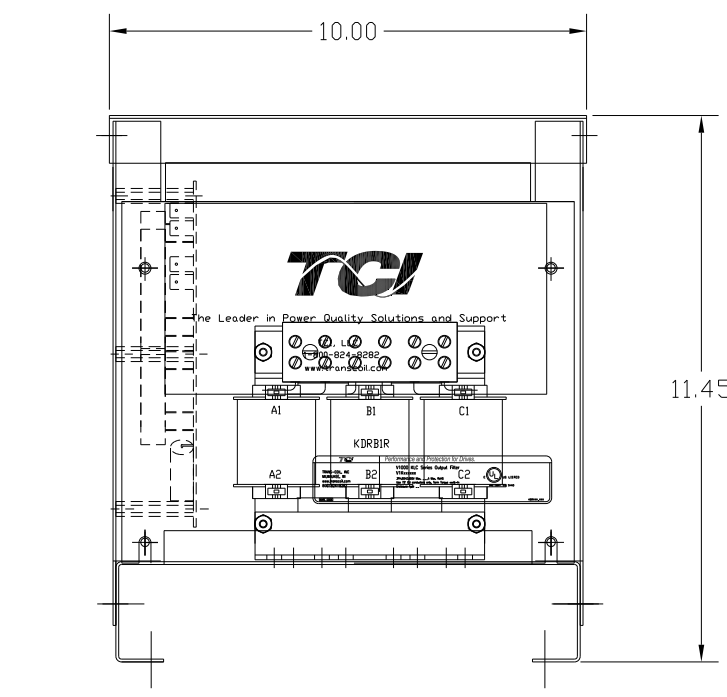


TERMINAL BLOCK SPECIFICATIONS:
 600 V.
 85 AMP
 18-4 AWG
 TORQUE 20 IN-LBS

.265 DIA HOLES
 4 PLACES




SPECIFICATIONS:	
AMP.	18
VOLT	240-600
PHASE	3
HZ	60
WEIGHT, LBS.	25
ENCLOSURE	ENCLOSED, 3R
ENCL., COLOR	PEBBLE GRAY



FINISH:
 VENDOR - LILLY POWDER COATINGS, INC.
 PRODUCT CODE - 312E
 COLOR - PEBBLE GRAY
 POWDER TYPE - POLYESTER-POLYURETHANE
 PAINT SUITABLE FOR OUTDOOR APPLICATION PER UL TYPE 3R
 AND APPLIED PER A UL ACCEPTED DTVV2 COATING PROGRAM.

CUSTOMER IS RESPONSIBLE FOR INSTALLATION TO
 MEET ALL NATIONAL AND LOCAL ELECTRICAL CODES.

NO	REVISION	DATE	BY	TOLERANCES (EXCEPT AS NOTED) DECIMAL .XX ± .02 .XXX ± .01 FRACTIONAL ± 1/32 ANGULAR ± 1/2°	DRN. BY RJC SCALE --	DATE 6/18/10 APRVD.	DWG. NO. 104248DG B
					 7878 N. 86th STREET MILWAUKEE, WI 53224		
					V1K18A03EX OUTPUT FILTER 18 AMP, 480/3/60, ENCL., 3R		
					SHT.1 OF 1		