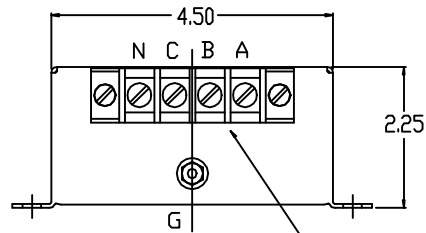
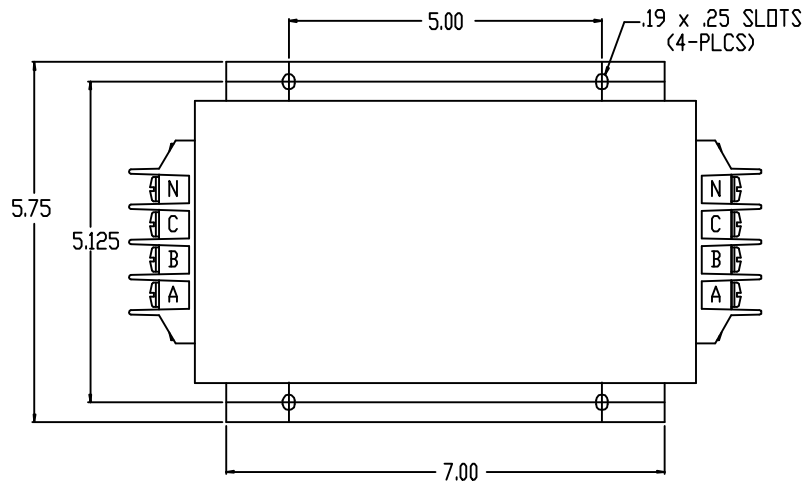
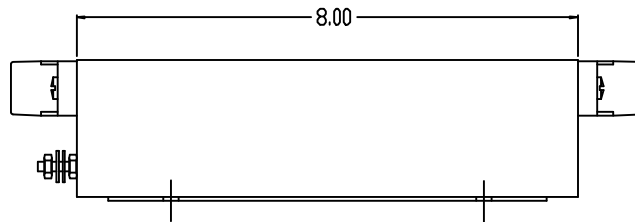


50 Ω INSERTION LOSS

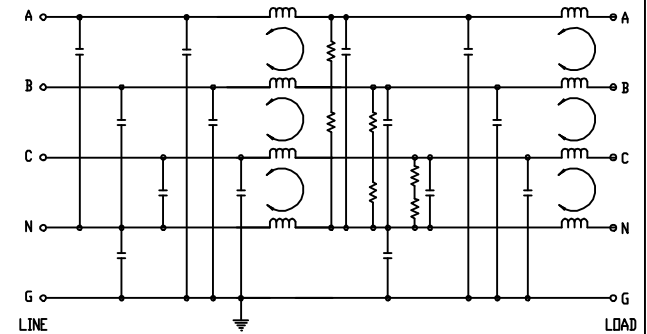
COMMON MODE		DIFFERENTIAL MODE	
mHz	min. I.L. (dB)	mHz	min. I.L. (dB)
.01		.01	
.05		.05	
.15	60	.15	10
0.5	60	0.5	10
1.0	80	1.0	15
5.0	70	5.0	50
10	60	10	40
30	45	30	30
100		100	



TERMINALS:  
A,B,C,N: 10-32 SCREW  
G: 8-32 SCREW



ELECTRICAL SCHEMATIC



WEIGHT: 7 LBS  
POWER DISSIPATION @ RATED CURRENT: 16.0W MAX  
AGENCIES: UL RECOGNIZED UNDER UL 1283

MAX LEAKAGE CURRENT EACH LINE TO GROUND  
5X6mA AT 250VAC 60Hz  
12X6mA AT 600VAC 60Hz

HI-POT(1 MIN) HI-POT(1 MIN)  
L/G 3150VDC A-B, A-C, A-N, A-G  
B-C, B-N, B-G  
L/L 3150VDC C-N, C-G, N-G (10 TESTS)

RATED VOLTAGE: 600VAC MAX, 50-60Hz (3-PHASE WYE OR DELTA)  
RATED CURRENT AT: 600VAC, 45A  
MAX OPERATING AMBIENT TEMPERATURE AT RATED CURRENT: 40°C  
HUMIDITY RANGE: 0-95% R.H.  
INSULATION RESISTANCE: 1000 MEGOHMS MIN AT 250VDC

				TOLERANCES (EXCEPT AS NOTED) DECIMAL	7878 N. 86th STREET MILWAUKEE, WI 53224
				.XX ± .03 .XXX ± .010	
				FRACTIONAL ± 1/16	FILTER SPECIFICATION KRF45CTB
SEE ECD #1792	7-15-99	BW		ANGULAR ± 1/2°	DRN BY BW DATE 07-20-98 DWG. NO. 100283DG
NO	REVISION	DATE	BY	SCALE 1/2"=1"	APRVD. B SHT.1 OF1