

TORQUE WIRE LUGS TO 375 IN-LBS

WEIGHT: 65 LBS
 POWER DISSIPATION @ RATED CURRENT: 70W MAX
 AGENCIES: UL RECOGNIZED UNDER UL 1283

MAX LEAKAGE CURRENT EACH LINE TO GROUND
 60X6mA AT 250VAC 60Hz
 140X6mA AT 600VAC 60Hz

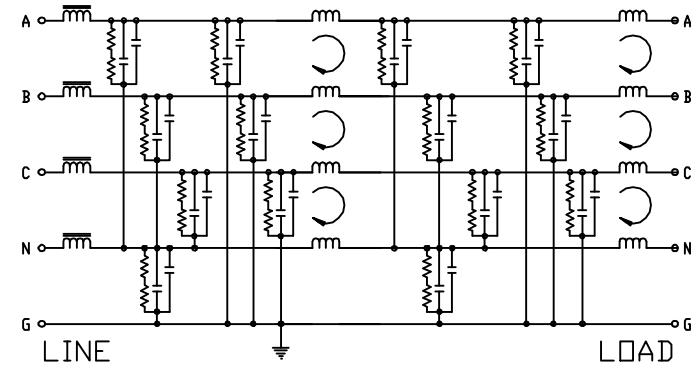
HI-POT(1 MIN) HI-POT(3150 VDC,1 MIN)
 L/G 3150VDC A-B, A-C, A-N, A-G
 B-C, B-N, B-G
 L/L 3150VDC C-N, C-G, N-G (10 TESTS)

RATED VOLTAGE: 600VAC MAX, 50-60Hz
 RATED CURRENT AT: 250VAC, 600A - 600VAC, 600A
 MAX OPERATING AMBIENT TEMPERATURE AT RATED CURRENT: 40°C
 HUMIDITY RANGE: 0-95% R.H.
 INSULATION RESISTANCE: 1000 MEGOHMS MIN AT 250VDC

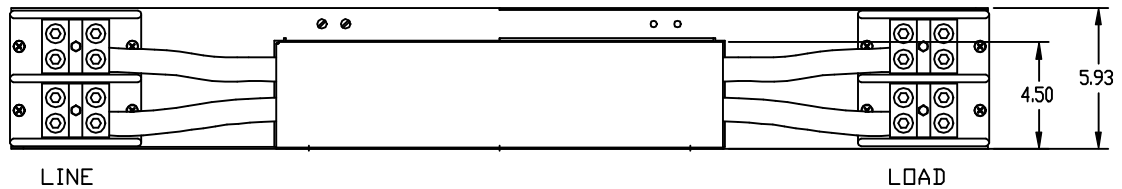
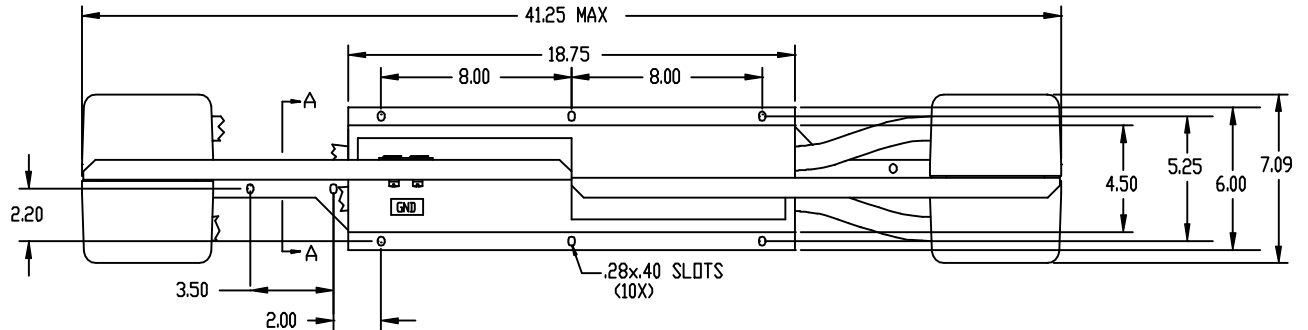
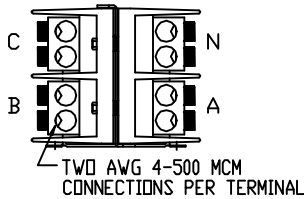
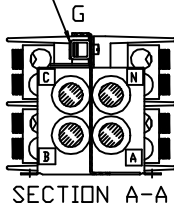
50 Ω INSERTION LOSS

COMMON MODE		DIFFERENTIAL MODE	
mHz	min. I.L. (dB)	mHz	min. I.L. (dB)
.01		.01	
.05	20	.05	10
.15	60	.15	25
0.5	60	0.5	35
1.0	50	1.0	35
5.0	50	5.0	30
10	40	10	25
30	30	30	20
100		100	

ELECTRICAL SCHEMATIC



ONE AWG 6-250 MCM
 CONNECTION FOR
 GROUND



		TOLERANCES (EXCEPT AS NOTED)		TCI 7878 N. 86th STREET MILWAUKEE, WI 53224
		DECIMAL .XX ± .03 .XXX ± .010		
SEE ECD #1887	1/14/2000	BW	FRACTIONAL ± 1/16	FILTER SPECIFICATIONS KRF600CPT
SEE ECD #1792	7-15-99	BW	ANGULAR ± 1/2°	
NO	REVISION	DATE	BY	DRN BY: BW DATE: 06-03-98 SCALE: 1/4"=1' APPR: C
				DWG. NO. 100279DG SHT. 1 OF 1