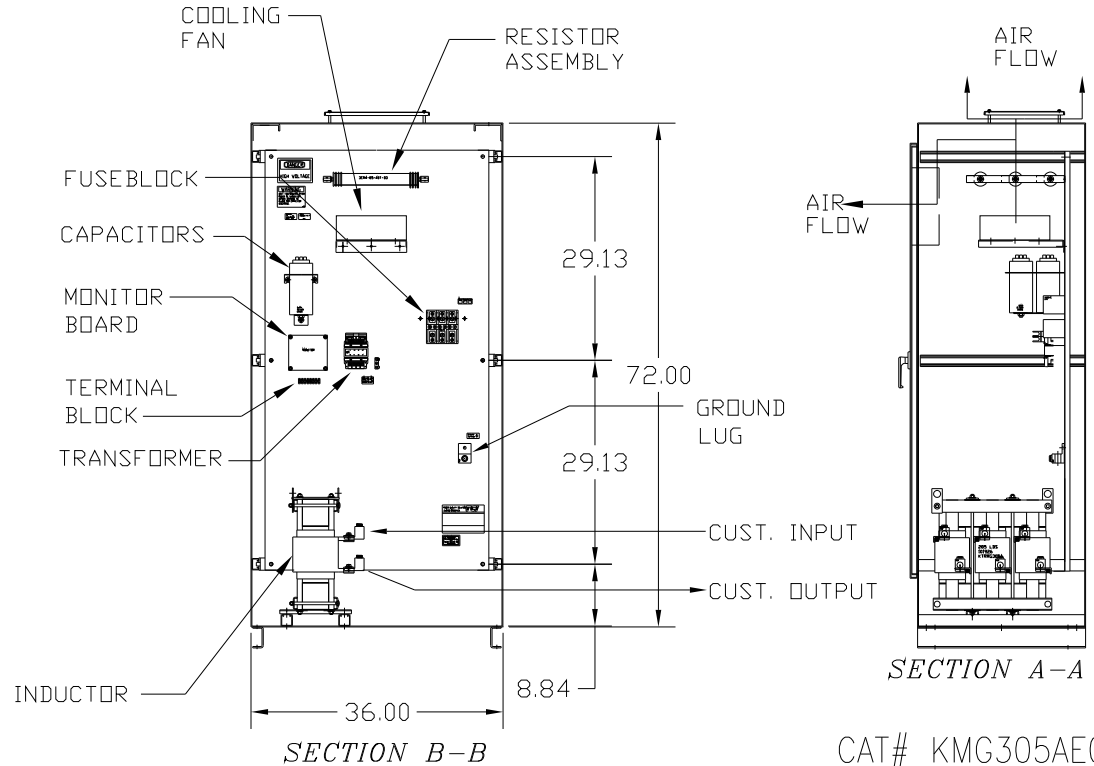
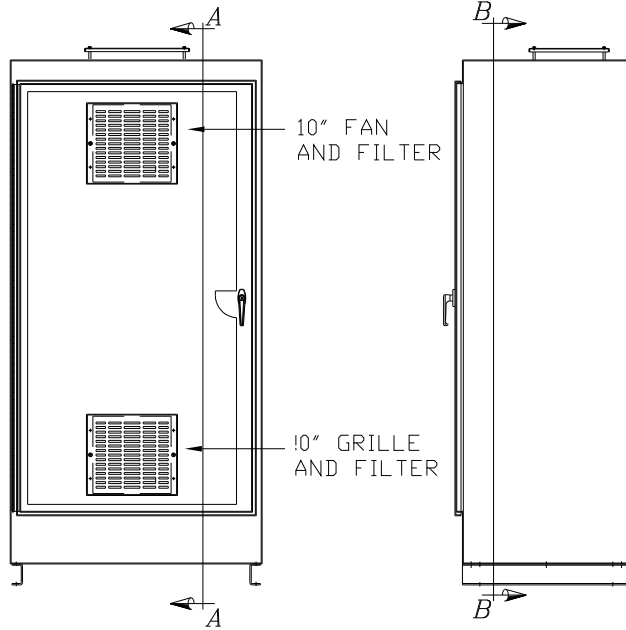


CAT# KMG305AE01
 HP 250 FLA 305
 VOLTS 460/480V
 60 HZ 3 PH

DWG # 101972DG
 ENCLOSURE TYPE 1
 DATE


FOR SCHEMATIC SEE DRAWING P/N 24281-5
 CUSTOMER IS RESPONSIBLE FOR PROPER
 INSTALLATION OF ASSEMBLY IN ACCORDANCE
 WITH LOCAL AND NATIONAL CODES.



GROUND LUG
 WIRE RANGE: (1)600MCM-#4 AWG
 (2)250MCM-1/0 AWG
 TORQUE: 500 LB-IN

LINE CONNECTIONS
 WIRE RANGE: (1)600MCM-#4 AWG
 (2)250MCM-1/0 AWG
 TORQUE: 500 LB-IN

CAT# KMG305AE01

				TOLERANCES (EXCEPT AS NOTED)		 7878 N. 86th STREET MILWAUKEE, WI 53224
				DECIMAL		
				.XX ± .01 .XXX ± .005		
				FRACTIONAL ± 1/32		
				ANGULAR ± 1/2°		DRN BY RJC SCALE --
NO	REVISION	DATE	BY			DATE 1/6/03 APRVD.
						DWG. NO. B 101972DG SHT. 1 of 1

SINEWAVE FILTER-ENCLOSED
 250 HP, 305 AMP, 480 V.