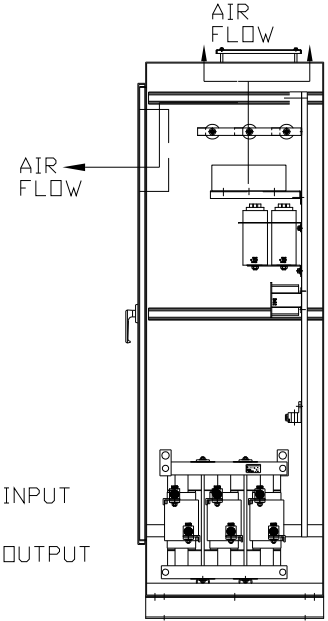
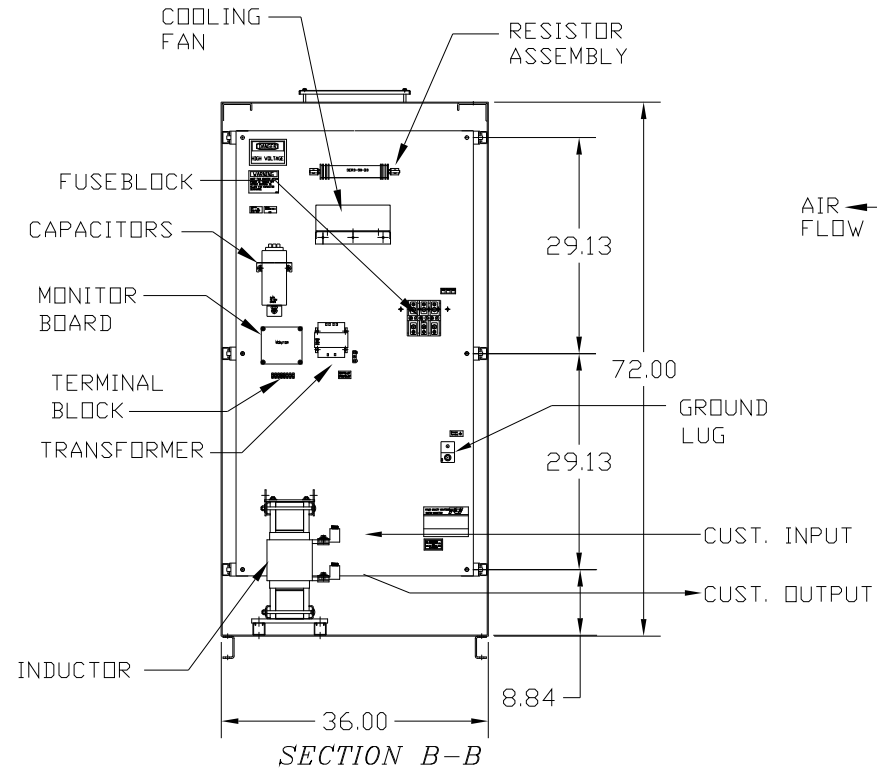
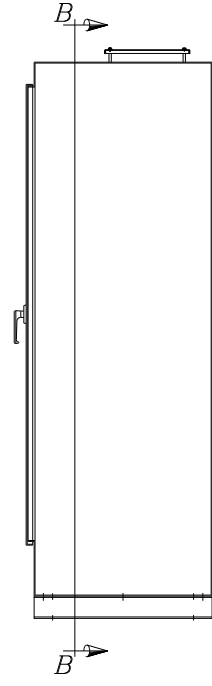
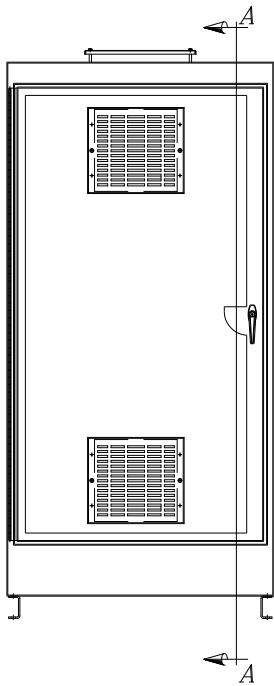


CAT# KMG200CE01
 200 FLA 200
 VOLTS 575/600V
 60 HZ 3 PH

DWG # 102015DG
 ENCLOSURE TYPE 1
 DATE

FOR SCHEMATIC SEE DRAWING P/N 24281-14

CUSTOMER IS RESPONSIBLE FOR PROPER
 INSTALLATION OF ASSEMBLY IN ACCORDANCE
 WITH LOCAL AND NATIONAL CODES.



SECTION A-A

CAT# KMG200CE01

GROUND LUG
 WIRE RANGE: 250MCM-#6 AWG
 TORQUE: 275 LB-IN

LINE CONNECTIONS
 WIRE RANGE: 250MCM-#6 AWG
 TORQUE: 275 LB-IN

				TOLERANCES (EXCEPT AS NOTED):		7878 N. 86th STREET MILWAUKEE, WI 53224	
				DECIMAL			
				.XX ± .01		SINEWAVE FILTER-ENCLOSED 200 HP, 200 AMP, 600 V.	
				.XXX ± .005			
				FRACTIONAL		DRN BY RJC	
				± 1/32		DATE 1/26/03	
				ANGULAR		APRVD.	
				± 1/2°		DWG. NO. B 102015DG	
NO	REVISION	DATE	BY			SCALE --	SHT. 1 OF 1