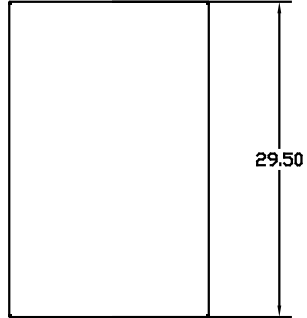
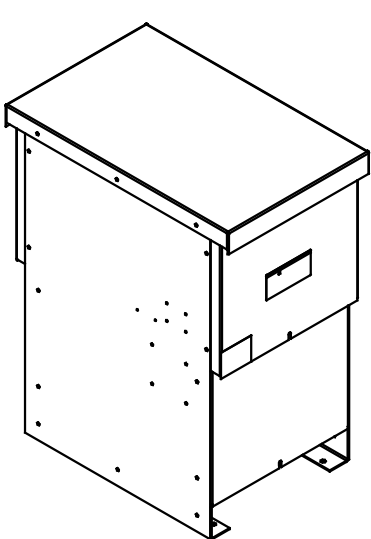


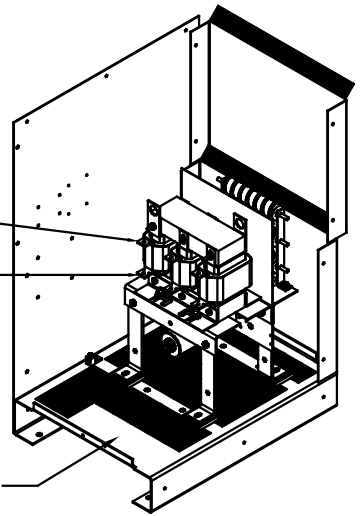
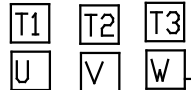
GENERAL PURPOSE, 1/3R, COLOR: GREY.

KMG HIGH PERFORMANCE OUTPUT FILTER
 PART NUMBER: KMG65AG010000
 FLA: 65
 SYSTEM VOLTAGE: 480V
 HZ: 60
 PHASE: 3
 DRAWING#: 103883DG
 SCHEMATIC: 26888
 ENCLOSURE TYPE: 1/3R
MOTORGUARD

215 LBS : APPROX WEIGHT.

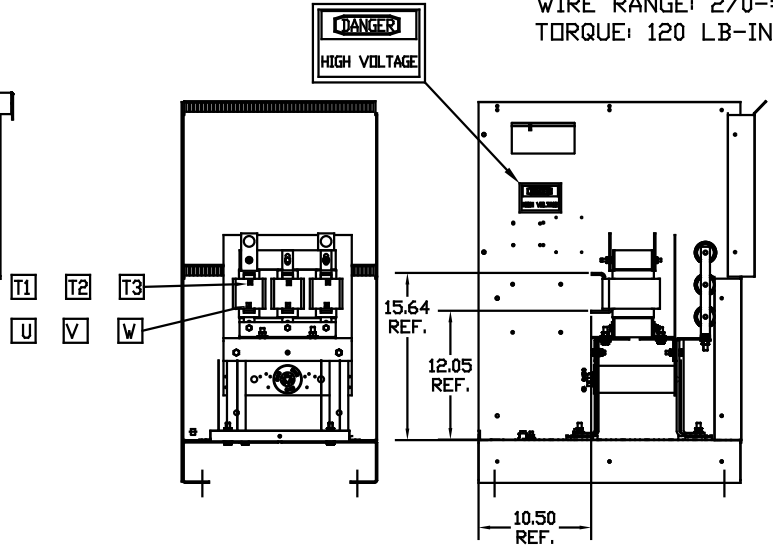
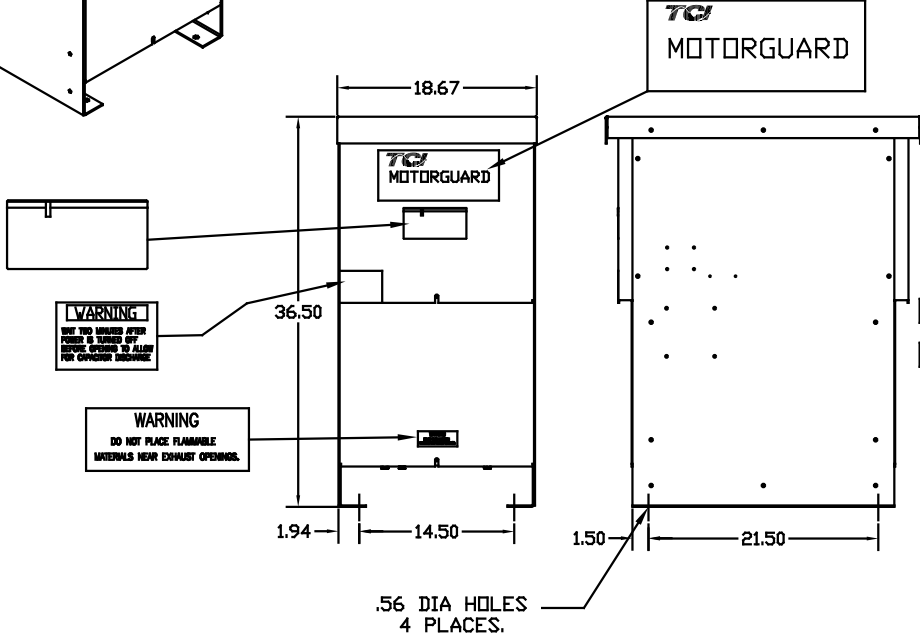


CUSTOMER CONNECTIONS



CUSTOMER WIRE ENTRANCE AND EXIT LOCATION.

GROUND LUG
 WIRE RANGE: 2/0-#6 AWG
 TORQUE: 120 LB-IN



PART NUMBER: KMG65AG010000

FOR SCHEMATIC SEE DRAWING # 26888.

CUSTOMER IS RESPONSIBLE FOR INSTALLATION TO MEET ALL NATIONAL AND LOCAL ELECTRICAL CODES.

				TOLERANCES EXCEPT AS NOTED:	7878 N. 86th STREET MILWAUKEE, WI 53224
				DECIMAL	
				.XX ±.03	KMG, LRC FILTER STANDARD 65 AMP 480/3/80, 1/3R
				.XXX ±.01	
				FRACTIONAL ± 1/32	DRG BY: DSW DATE: 12/02/08 DWG. NO: 103883DG
				ANGULAR ± 1/2°	SCALE: TO FIT APPR: C
NO	REVISION	DATE	BY		SHT. 1 OF 1