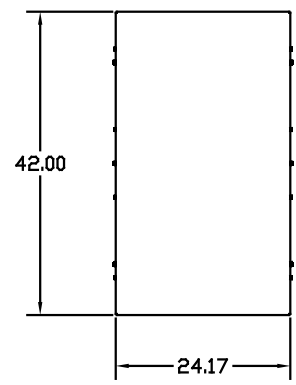


APPROX WT: 755LBS



GENERAL PURPOSE, 1/3R, COLOR: WHITE.

KMG HIGH PERFORMANCE OUTPUT FILTER

PART NUMBER: KMG600AG3R0000

FLA: 600 DRAWING#: 103447DG

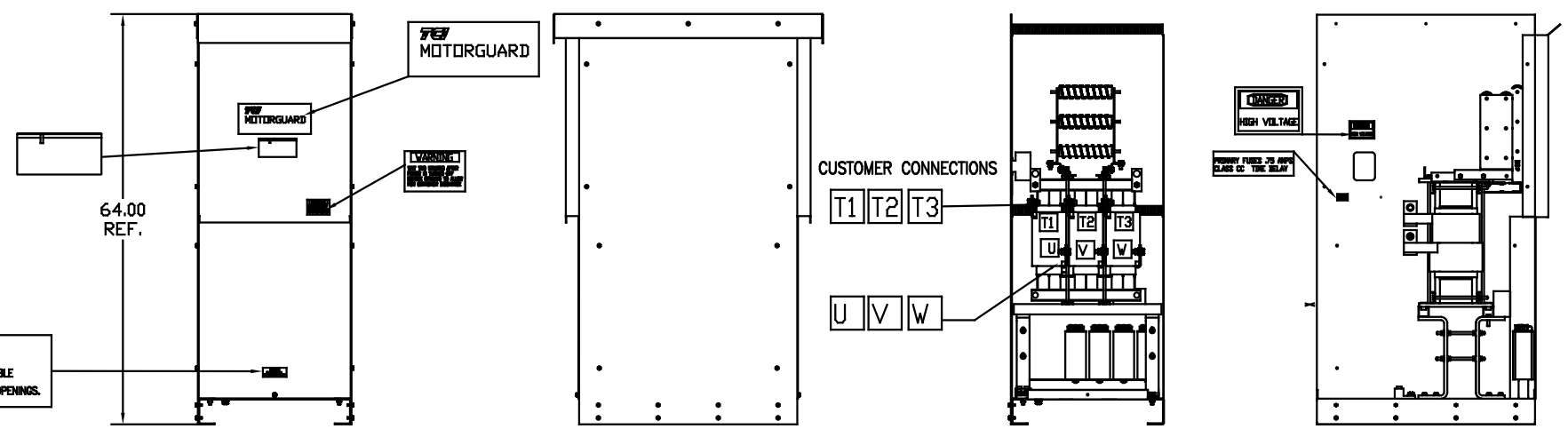
SYSTEM VOLTAGE: 480V SCHEMATIC: 23736

HZ: 60

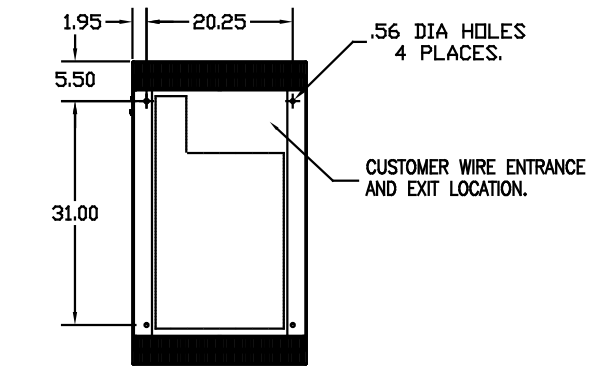
PHASE: 3 ENCLOSURE TYPE: 1/3R

MOTORGUARD

GROUND LUG
WIRE RANGE: TWO 600MCM-2
TORQUE: 500 LB-IN



WARNING
DO NOT PLACE FLAMMABLE
MATERIALS NEAR EXHAUST OPENINGS.



PART NUMBER: KMG600AG3R0000
FOR SCHEMATIC SEE DWG# 26736

CUSTOMER IS RESPONSIBLE FOR INSTALLATION
TO MEET ALL NATIONAL AND LOCAL ELECTRICAL CODES.

| | | | | | | | |
|----|----------|------|----|--|--|---|--|
| | | | | | | | |
| | | | | TOLERANCES EXCEPT AS NOTED | | TCI 7878 N. 86th STREET MILWAUKEE, WI 53224 | |
| | | | | .XX ± .02 .XXX ± .01 FRACTIONAL ± 1/32 ANGULAR ± 1/2° | | | |
| | | | | DRAWN BY: DSW SCALE: TO FIT | | DATE: 08/06/08 DWG NO: 103447DG SHI. 1 OF 1 | |
| NO | REVISION | DATE | BY | | | | |