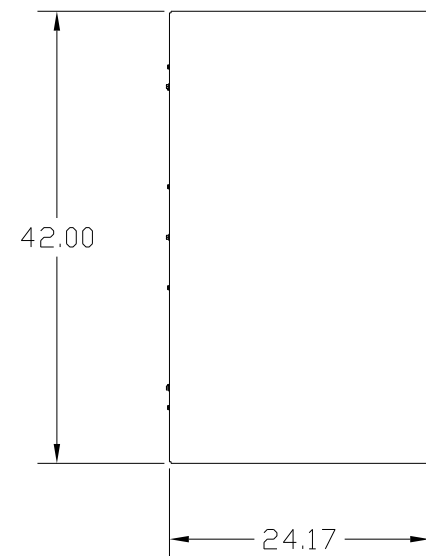


GENERAL PURPOSE, 1/3R, COLOR: WHITE.

APPROX WT: 625LBS



KMG HIGH PERFORMANCE OUTPUT FILTER

PART NUMBER: KMG305AG3R0000

FLA: 305 DRAWING#: 103857DG

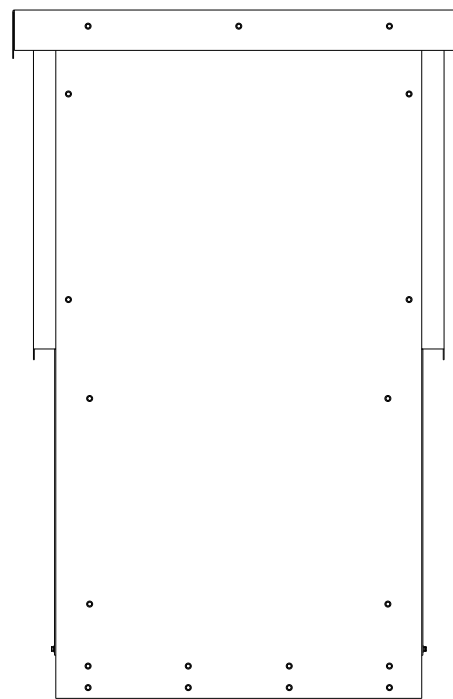
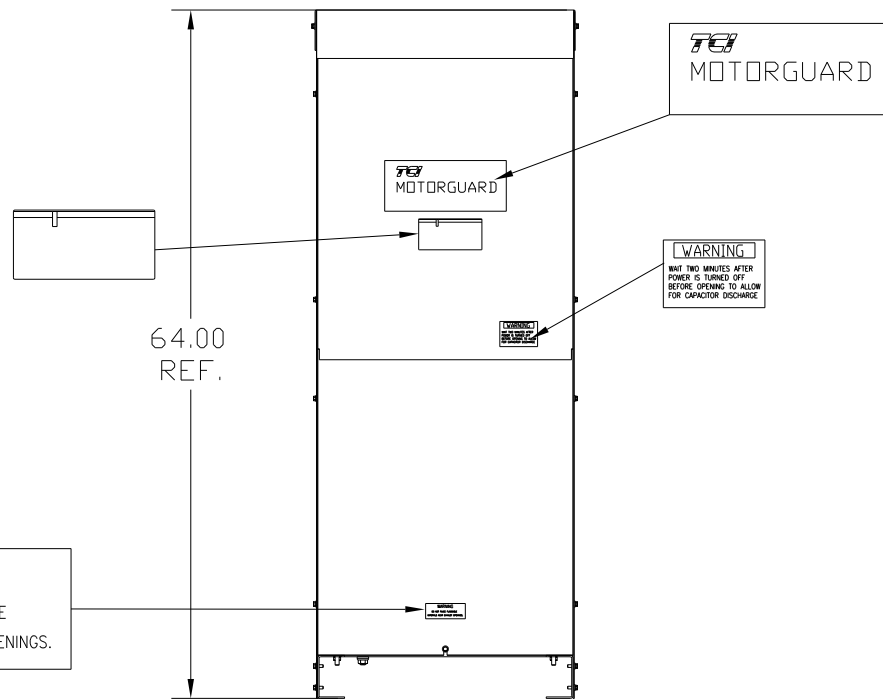
SYSTEM VOLTAGE: 480V SCHEMATIC: 26736

HZ: 80

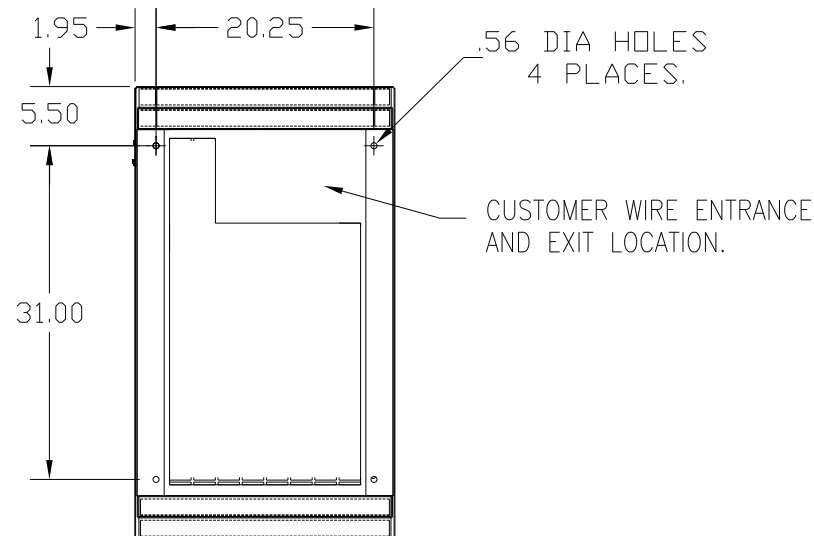
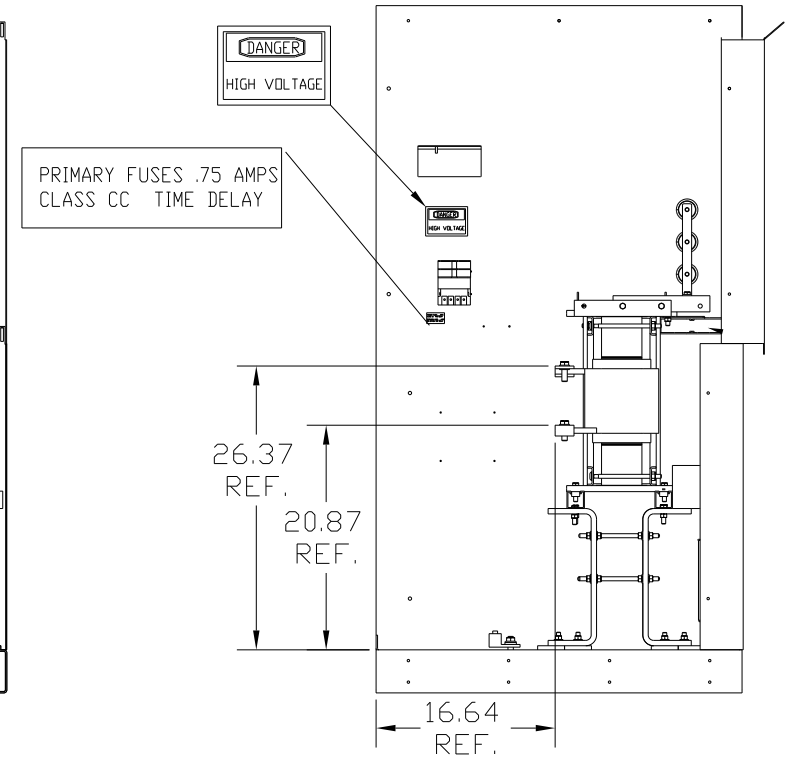
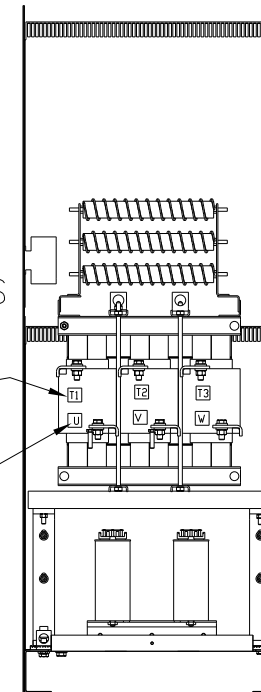
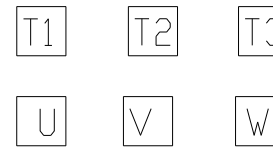
PHASE: 3 ENCLOSURE TYPE: 1/3R

MOTORGUARD

GROUND LUG
 WIRE RANGE: ONE 600CM- #4 AWG
 TWO 250MCM-1/0
 TORQUE: 500 LB-IN



CUSTOMER CONNECTIONS
 (.56 DIA HOLES 6 PLACES.)



PART NUMBER: KMG305AG3R0000

FOR SCHEMATIC SEE DWG# 26736

CUSTOMER IS RESPONSIBLE FOR INSTALLATION TO MEET ALL NATIONAL AND LOCAL ELECTRICAL CODES.

				TOLERANCES (EXCEPT AS NOTED)		TCI 7878 N. 86th STREET MILWAUKEE, WI 53224	
				DECIMAL		KMG, LRC FILTER, STANDARD	
				.XX ± .50		305AMP, 480/3/80, 1/3R	
				.XXX ± .25		DRN BY DSW DATE 10/08/08 DWG. NO. 103857DG	
				FRACTIONAL		SCALE TO FIT	
				± 1/32		APPRV: D	
				ANGULAR		SHT. 1 OF 1	
				± 1/2°			
NO	REVISION	DATE	BY				