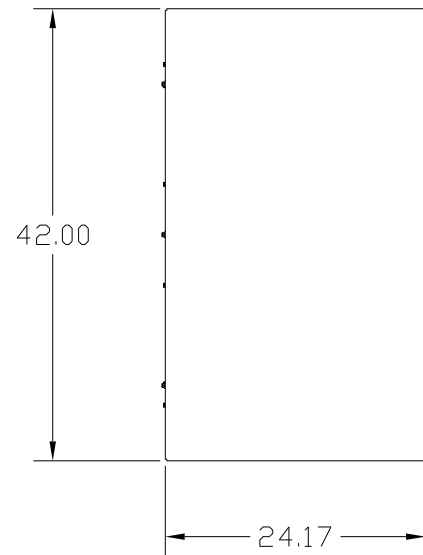


GENERAL PURPOSE, 1/3R, COLOR: GREY.

APPROX WT: 625LBS



KMG HIGH PERFORMANCE OUTPUT FILTER

PART NUMBER: KMG305AG010000

FLA: 305 DRAWING#: 103890DG

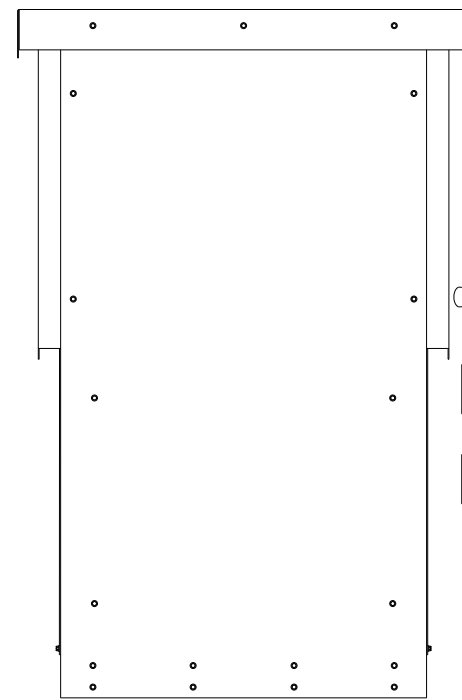
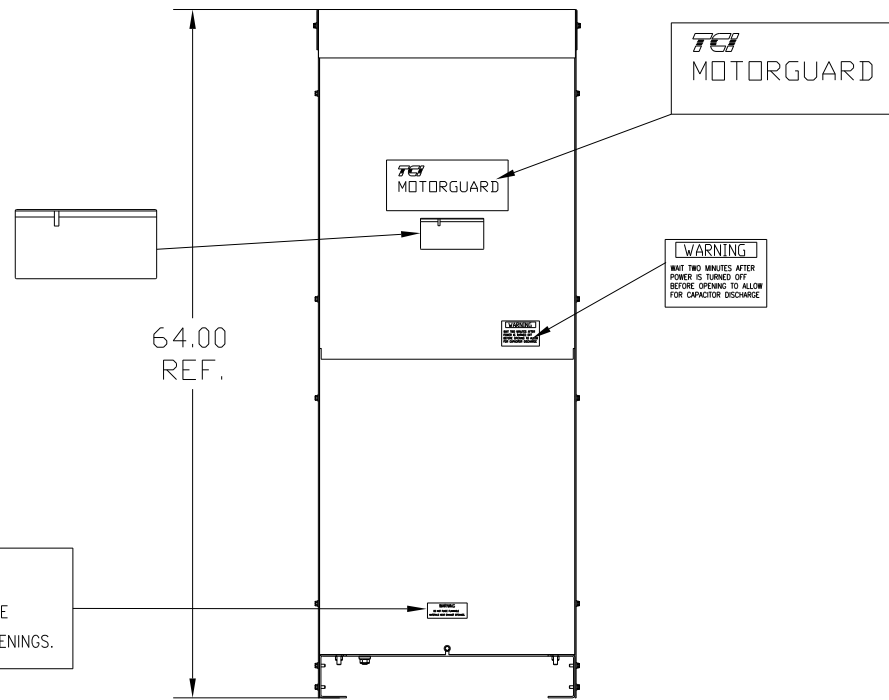
SYSTEM VOLTAGE: 480V SCHEMATIC: 23736

HZ: 80

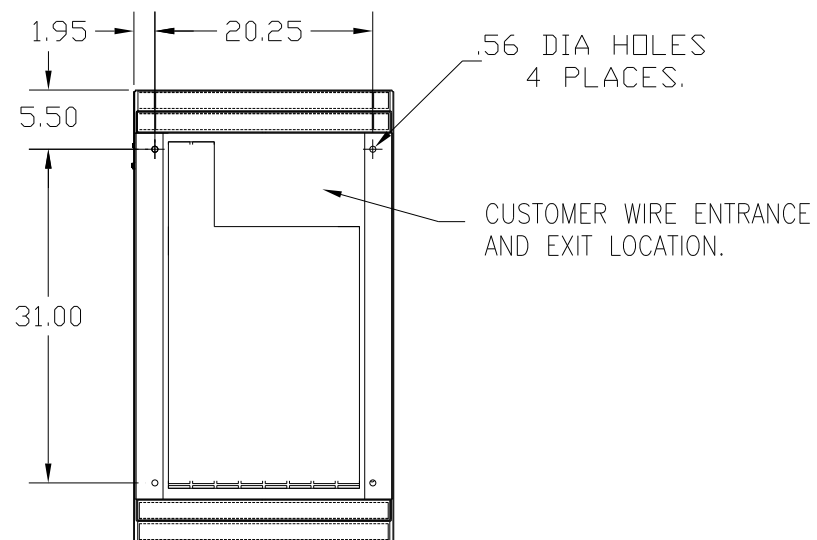
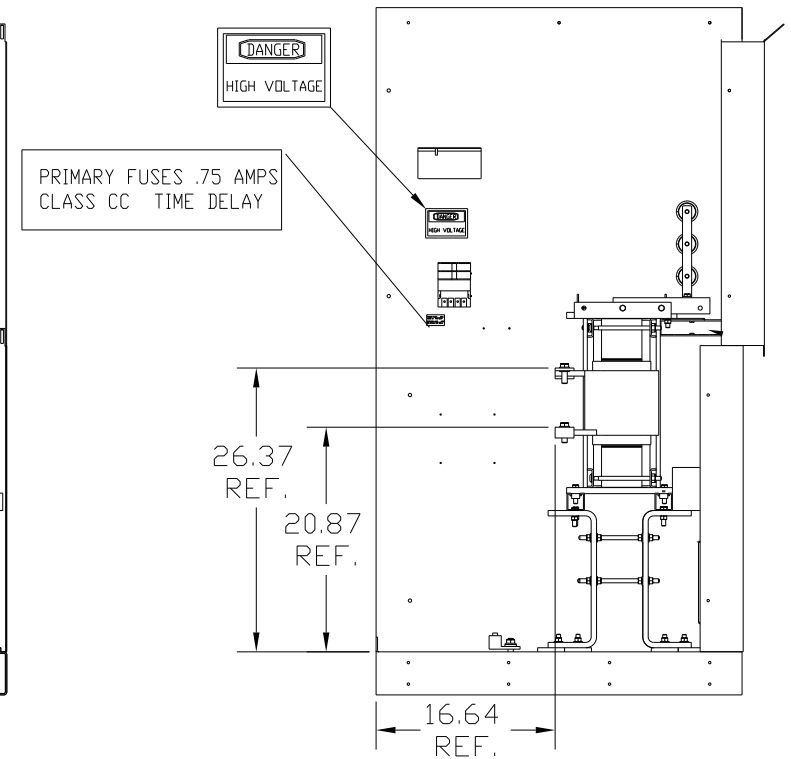
PHASE: 3 ENCLOSURE TYPE: 1/3R

MOTORGUARD

GROUND LUG
 WIRE RANGE: ONE 600CM- #4 AWG
 TWO 250MCM-1/0
 TORQUE: 500 LB-IN



CUSTOMER CONNECTIONS
 (.56 DIA HOLES 6 PLACES.)



PART NUMBER: KMG305AG010000

FOR SCHEMATIC SEE DWG# 26736

CUSTOMER IS RESPONSIBLE FOR INSTALLATION
 TO MEET ALL NATIONAL AND LOCAL ELECTRICAL CODES.

				TOLERANCES (EXCEPT AS NOTED)	7878 N. 86th STREET MILWAUKEE, WI 53224 KMG, LRC FILTER, STANDARD 305AMP, 480/3/80, 1/3R DRN BY DSW DATE 10/08/08 DWG. NO. 103890DG SCALE TO FIT APPROV: D SHT. 1 OF 1
				DECIMAL	
				.XX ± .50	
				.XXX ± .25	
				FRACTIONAL ± 1/32	
NO	REVISION	DATE	BY	ANGULAR ± 1/2°	