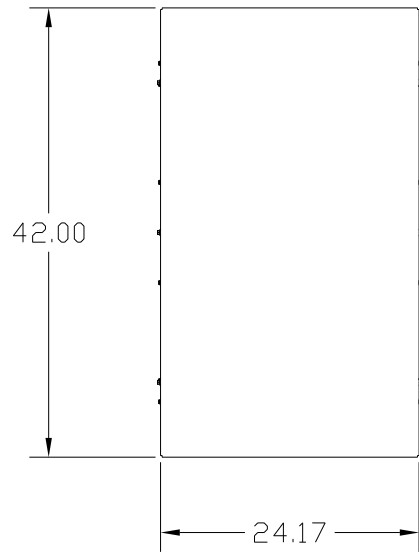


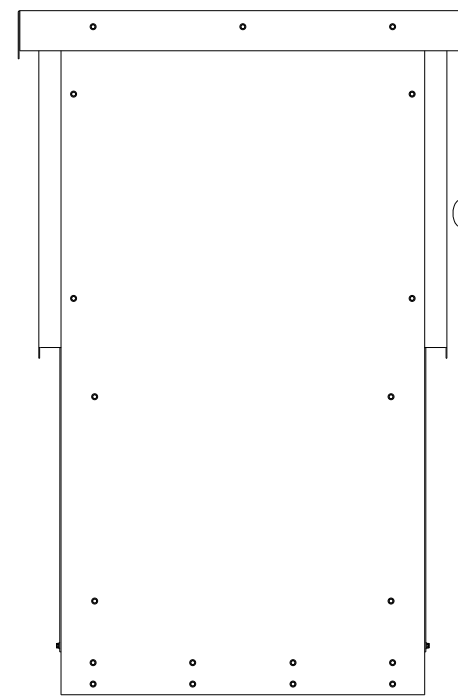
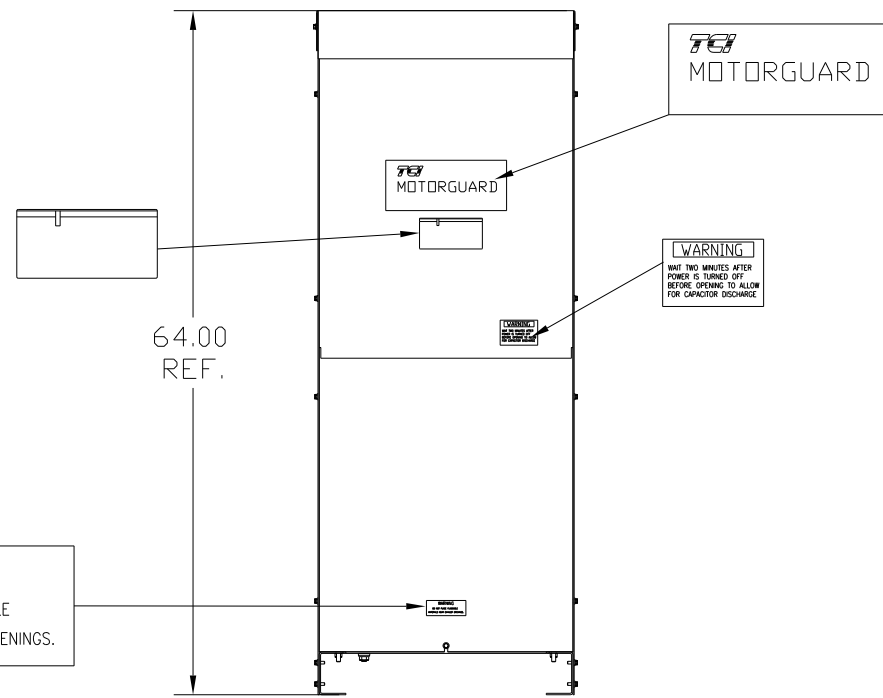
GENERAL PURPOSE, 1/3R, COLOR: WHITE.

APPROX WT: 615LBS

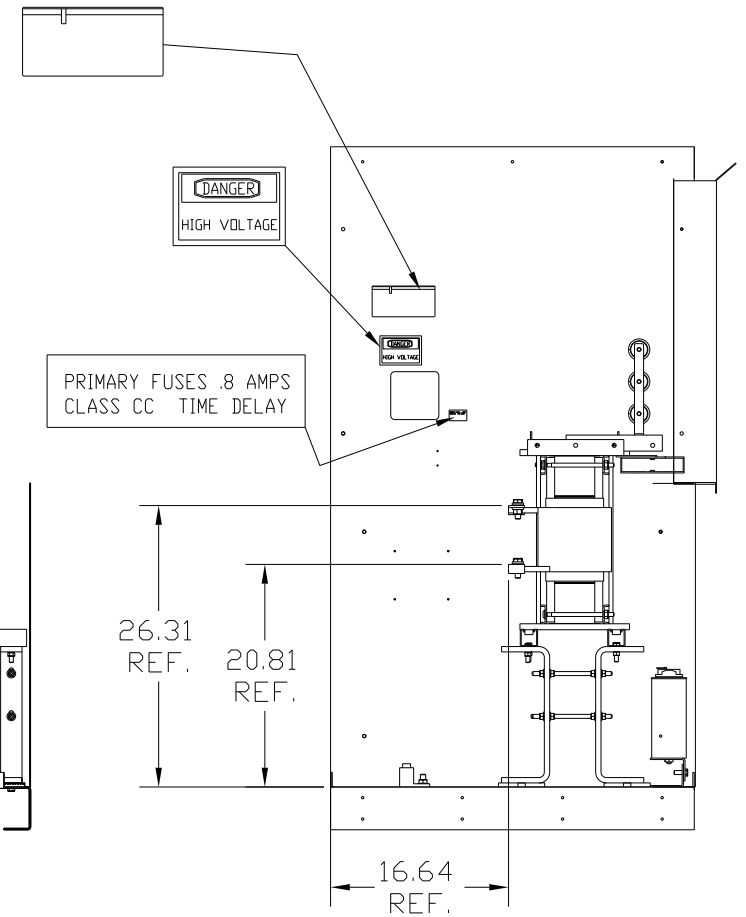
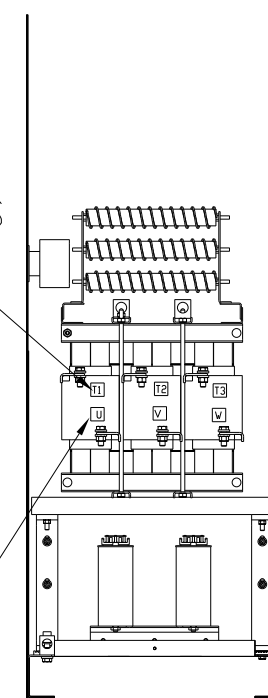
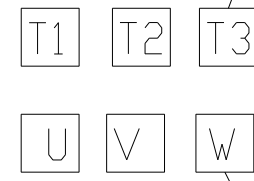
FOR SCHEMATIC SEE DWG# 26941  
 PART NUMBER: KMG250CG3R0000



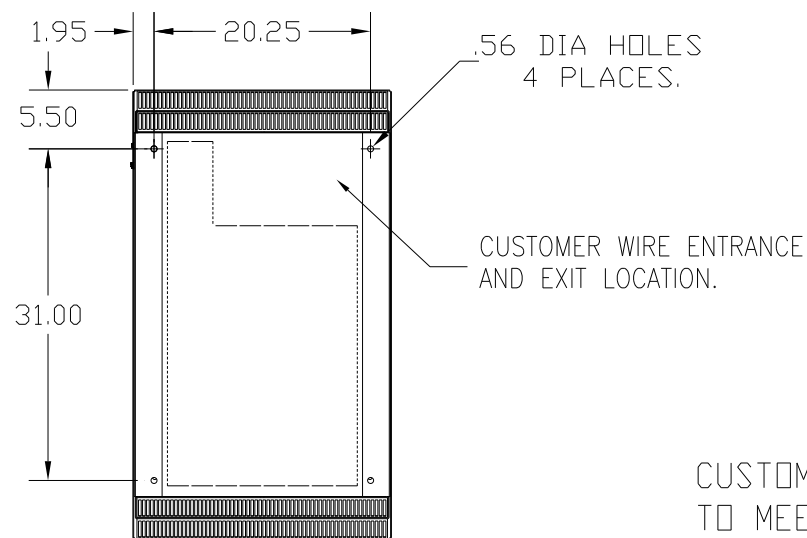
KMG HIGH PERFORMANCE OUTPUT FILTER	
PART NUMBER: KMG250CG3R0000	
FLA: 250	DRAWING#: 103929DG
SYSTEM VOLTAGE: 600V	SCHEMATIC: 26941
HZ: 80	
PHASE: 3	ENCLOSURE TYPE: 1/3R
<b>MOTORGUARD</b>	



CUSTOMER CONNECTIONS  
 (.56 DIA HOLES 6 PLACES.)



GROUND LUG  
 WIRE RANGE: ONE 600CM- #4 AWG  
 TWO 250MCM-1/0  
 TORQUE: 500 LB-IN



CUSTOMER IS RESPONSIBLE FOR INSTALLATION  
 TO MEET ALL NATIONAL AND LOCAL ELECTRICAL CODES.

				TOLERANCES (EXCEPT AS NOTED)		7878 N. 86th STREET MILWAUKEE, WI 53224	
				DECIMAL		KMG, LRC FILTER, STANDARD	
				.XX ± .50		250AMP, 600/3/80, 1/3R	
				.XXX ± .25		DWN BY: DSW DATE: 1/28/09 DWG. NO.: 103929DG	
				FRACTIONAL		SCALE: TO FIT	
				± 1/32		APPRV: D	
				ANGULAR		SHT. 1 OF 1	
				± 1/2°			
NO	REVISION	DATE	BY				