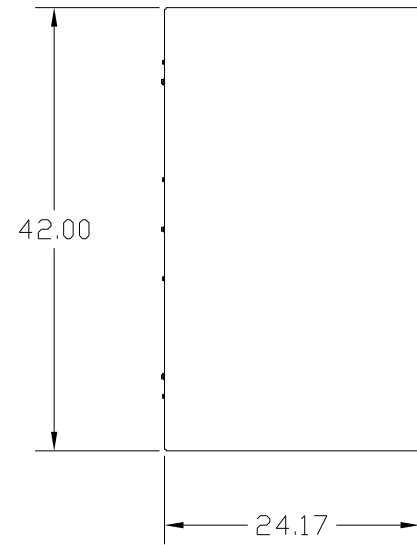


GENERAL PURPOSE, 1/3R, COLOR: GREY..

APPROX WT: 595LBS



KMG HIGH PERFORMANCE OUTPUT FILTER

PART NUMBER: KMG250AG010000

FLA: 250 DRAWING#: 103889DG

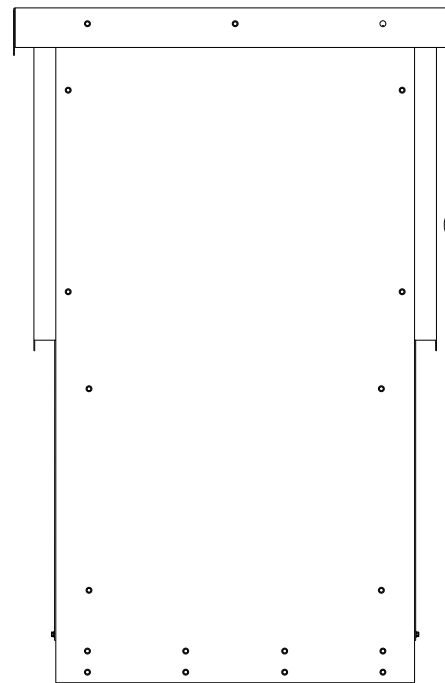
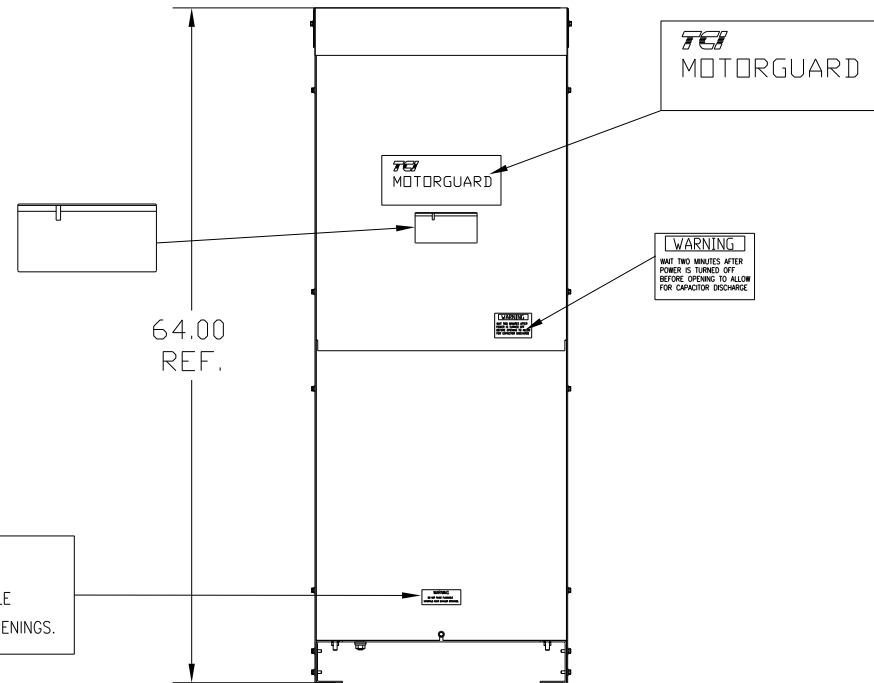
SYSTEM VOLTAGE: 480V SCHEMATIC: 23736

HZ: 80

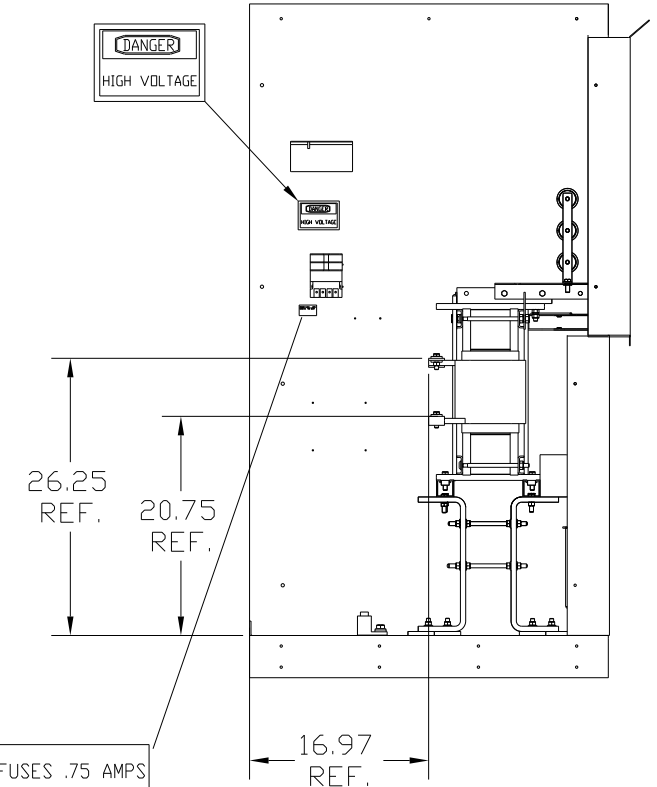
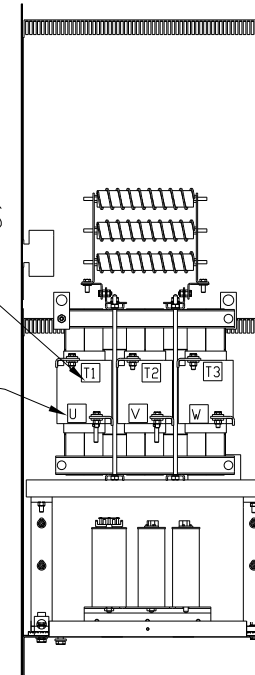
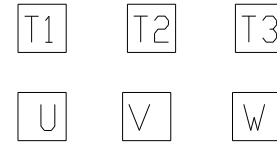
PHASE: 3 ENCLOSURE TYPE: 1/3R

MOTORGUARD

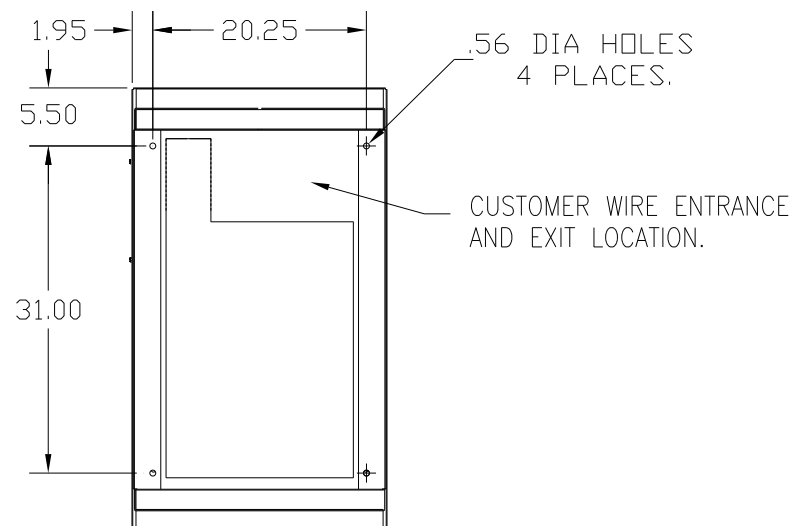
GROUND LUG
WIRE RANGE: ONE 600CM- #4 AWG
TWO 250MCM-1/0
TORQUE: 500 LB-IN



CUSTOMER CONNECTIONS
(.44 DIA HOLES 6 PLACES.)



WARNING
DO NOT PLACE FLAMMABLE
MATERIALS NEAR EXHAUST OPENINGS.



PART NUMBER: KMG250AG010000

FOR SCHEMATIC SEE DWG# 26736

CUSTOMER IS RESPONSIBLE FOR INSTALLATION
TO MEET ALL NATIONAL AND LOCAL ELECTRICAL CODES.

				TOLERANCES (EXCEPT AS NOTED)		7878 N. 86th STREET MILWAUKEE, WI 53224	
				DECIMAL		KMG, LRC FILTER, STANDARD	
				.XX ± .50		250AMP, 480/3/80, 1/3R	
				.XXX ± .25		DWN BY: DSW DATE: 10/08/08 DWG. NO.: 103889DG	
				FRACTIONAL		SCALE: TO FIT APPROV: D	
				± 1/32		SHT. 1 OF 1	
				ANGULAR			
				± 1/2°			
NO	REVISION	DATE	BY				