

GENERAL PURPOSE, 1/3R, COLOR: WHITE.

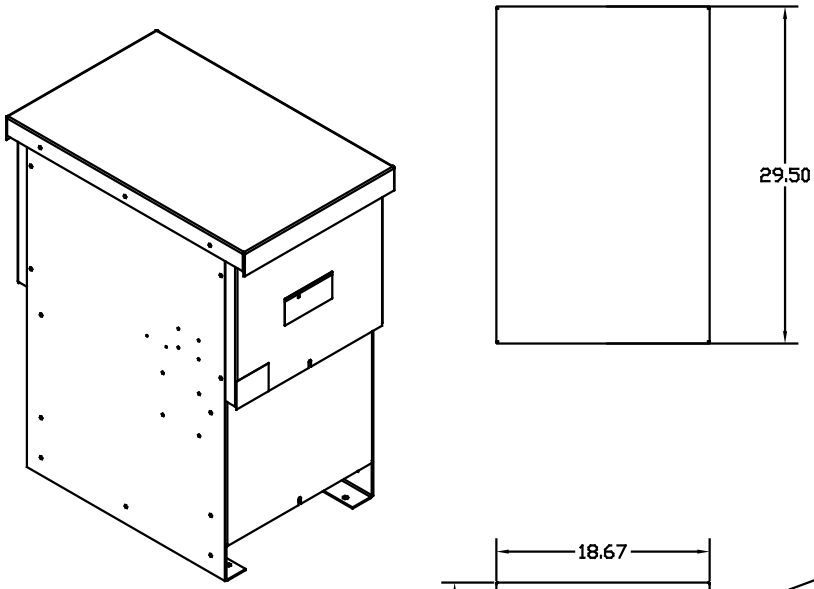
260 LBS : APPROX WEIGHT.

KMG HIGH PERFORMANCE OUTPUT FILTER

PART NUMBER: KMG200AG3R0000

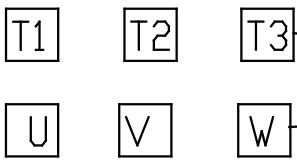
FLA: 200 DRAWING#: 103448DG
 SYSTEM VOLTAGE: 480V SCHEMATIC: 26736
 HZ: 80
 PHASE: 3 ENCLOSURE TYPE: 1/3R

MOTORGUARD

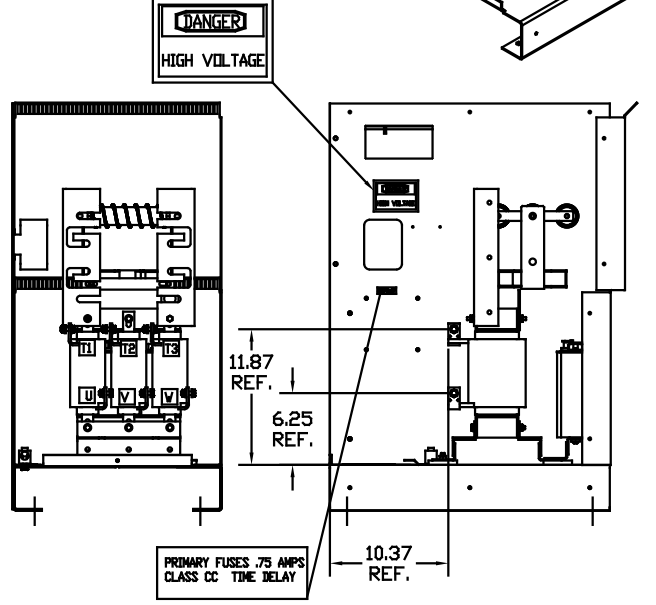
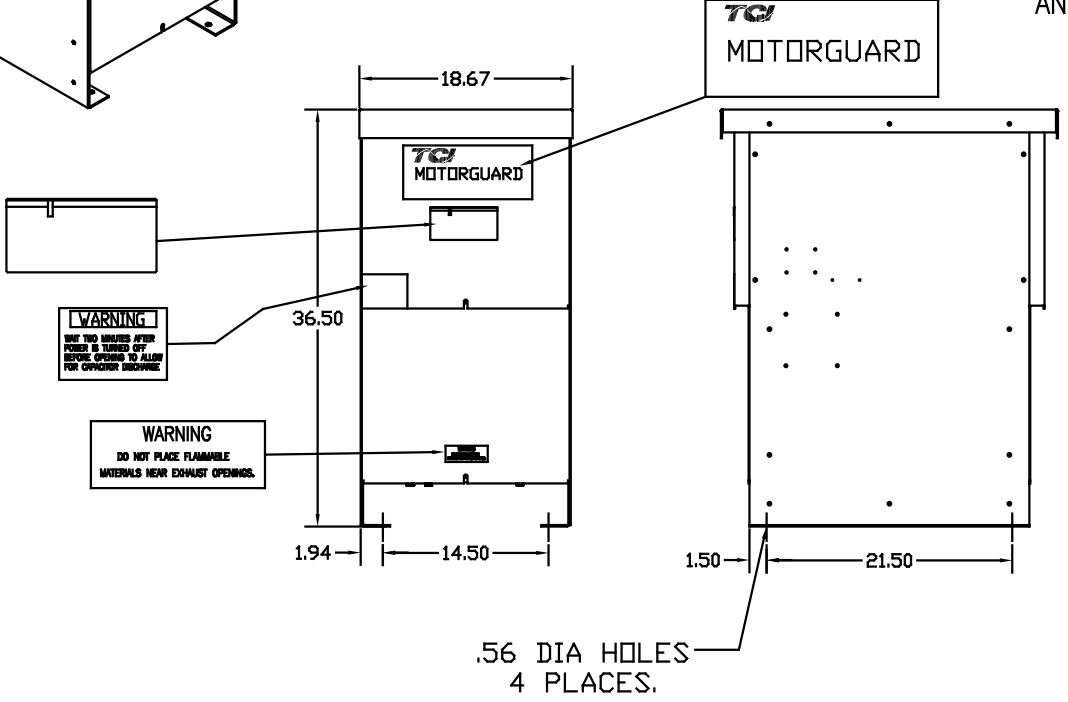
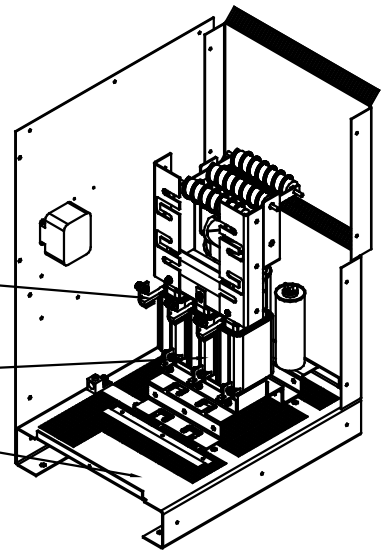


GROUND LUG
 WIRE RANGE: 250MCM-#6 AWG
 TORQUE: 275 LB-IN

CUSTOMER CONNECTIONS



CUSTOMER WIRE ENTRANCE AND EXIT LOCATION.



CUSTOMER IS RESPONSIBLE FOR INSTALLATION TO MEET ALL NATIONAL AND LOCAL ELECTRICAL CODES.

PART NUMBER: KMG200AG3R0000
 FOR SCHEMATIC SEE DRAWING # 26736.

		TOLERANCES EXCEPT AS NOTED		TCI 7878 N. 86th STREET MILWAUKEE, WI 53224	
		DECIMAL			
		.XX ±.03		KMG, LRC FILTER STANDARD 200 AMP 480/3/80, 1/3R	
		.XXX ±.01			
		FRACTIONAL ± 1/32			
B	2605 REMOVE FAN BLK	4/20/09	DSW	DATE 12/23/08	REV. NO. 103448DG
NO	REVISION	DATE	BY	SCALE TO FIT	SHT. 1 OF 1