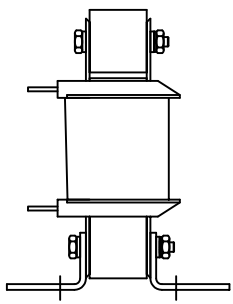
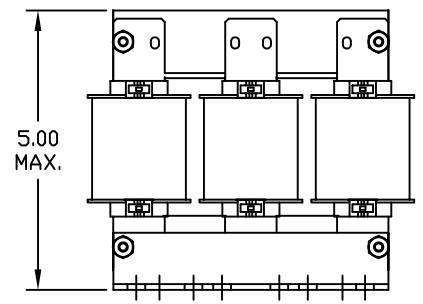


690V	NEC MOTOR HP	CATALOG NO	__AMPS(A)	APPROX WT-LBS	WATTS LOSS
5% Z	3	KLR6EQDV	6	7	28



TCI Performance and Protection for Drives.

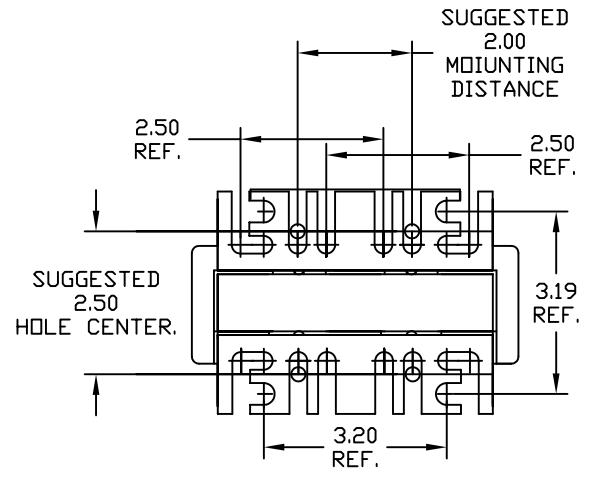
TRANS-COIL, INC
MILWAUKEE WI
WWW.transcoil.com
800-824-8282

KLR Series Line Reactor
CATALOG #
3PH, 50/60Hz, 690V Max, Amps RoHS

UL®
CS US

CE

A1 A2 B1 B2 C1 C2



				TOLERANCES (EXCEPT AS NOTED)	7878 N. 86th STREET MILWAUKEE, WI 53224 KLR SERIES 3 PH REACTOR 690V (FRAME B)	DRN BY DSW DATE 02/07/07 SCALE TO FIT APPRVD.	DWG. NO. B KLR6EQDV.DG SHT.1 OF1
				DECIMAL			
				.XX ± .03 .XXX ± .01			
				FRACTIONAL ± 1/32			
NO	REVISION	DATE	BY	ANGULAR ± 1/2°			