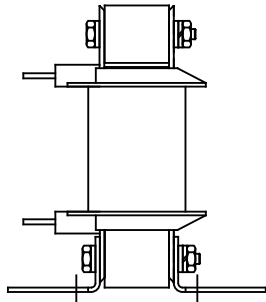
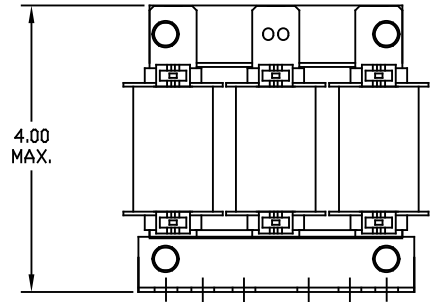
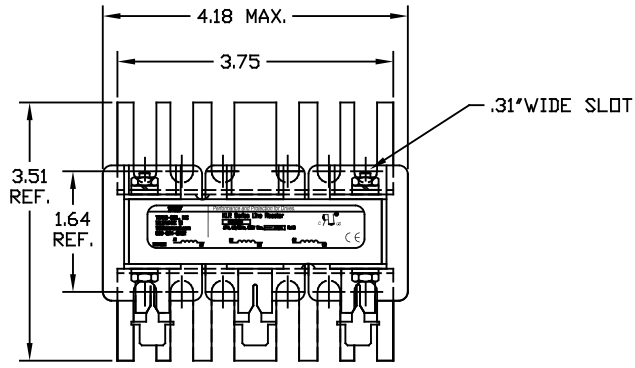


|      |              |            |           |               |            |
|------|--------------|------------|-----------|---------------|------------|
| 690V | NEC MOTOR HP | CATALOG NO | __AMPS(A) | APPROX WT-LBS | WATTS LOSS |
| 5% Z | 1.5-2        | KLR3EQDV   | 3         | 5             | 17         |



**TCI** Performance and Protection for Drives.

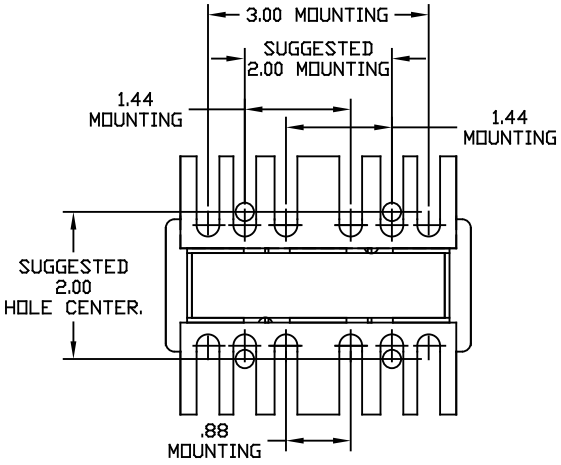
TRANS-COIL, INC  
MILWAUKEE WI  
WWW.transcoil.com  
800-824-8282

**KLR Series Line Reactor**  
CATALOG#  
3PH, 50/60Hz, 690V Max.  Amors  RotHS

TCI<sup>®</sup> US

CE

A1 A2 B1 B2 C1 C2



|    |          |      |    |                             |                  |  |                       |
|----|----------|------|----|-----------------------------|------------------|--|-----------------------|
|    |          |      |    | TOLERANCES EXCEPT AS NOTED: |                  | 7878 N. 86th STREET<br>MILWAUKEE, WI 53224       |                       |
|    |          |      |    | DECIMAL                     |                  |  |                       |
|    |          |      |    | .XX ± .03<br>.XXX ± .010    |                  |  |                       |
|    |          |      |    | FRACTIONAL<br>± 1/16        |                  |  |                       |
|    |          |      |    | ANGULAR<br>± 1/2°           |                  | <b>KLR SERIES 3 PH REACTOR</b><br>690V (FRAME A) |                       |
| NO | REVISION | DATE | BY | DRW. BY<br>DSW              | DATE<br>02/07/07 |  | DRG. NO.<br>KLR3EQDVG |
|    |          |      |    | SCALE<br>TO FIT             | APPROV.          |  | SHT. 1 OF 1           |