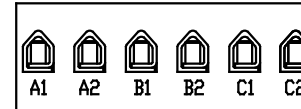
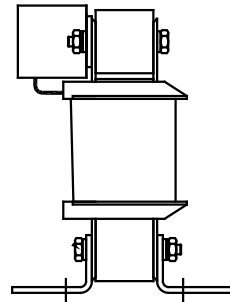
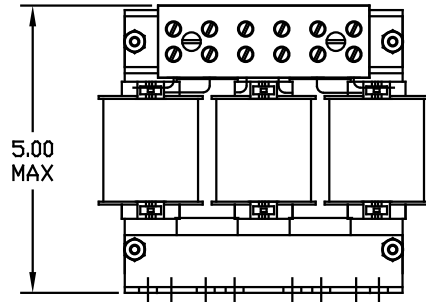
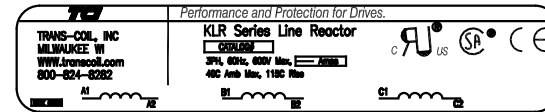
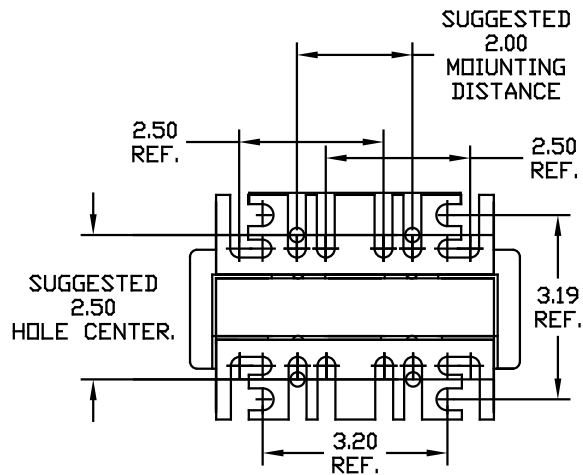


CATALOG NO	VOLTS(V)	__MH±10%	__AMPS(A)	APPROX WT-LBS	TORQUE(LB-IN)
KLR16ATB	14.40	1.38	16	8	20
KLR16BTB	7.20	.689	16	7	20
KLR16DTB	17.25	1.65	16	8	20
KLR16FTB	8.62	.826	16	7	20



NOTE: A1, A2, B1, B2, C1, C2, MARKINGS ON TERMINAL BLOCK. FOR REFERENCE ONLY.

Block Wire Range: #18 to #4 AWG Solid or Stranded, Copper
Tightening Torque: 20 LB-IN



				TOLERANCES EXCEPT AS NOTED		TCI 7878 N. 86th STREET MILWAUKEE, WI 53224	
				DECIMAL		SINE-GUARD REACTOR KLR TB'S (FRAME B)	
				.XX ± .03			
				.XXX ± .01			
				FRACTIONAL		DRN BY RJC	DATE 01/10/94
				± 1/32		SCALE TO FIT	APPRV. B
				ANGULAR		DWG NO. KLR-3DG	
				± 1/2°		SHT. 1 of 1	
NO	REVISION	DATE	BY				