

PERFORMANCE AND PROTECTION FOR DRIVES.

Trans-Coil, Inc.
Milwaukee, WI
www.transcoil.com
800-824-8282

KLCUL Output Filter
KLCUL600A
3PH, 60HZ, 600V Max, 600A Max
Desg # 101248DG Schematic # 25389
Enclosure type: OPEN

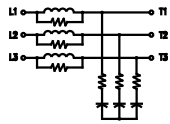
UL LISTED
UL 818, 50, 400

DATE CODE

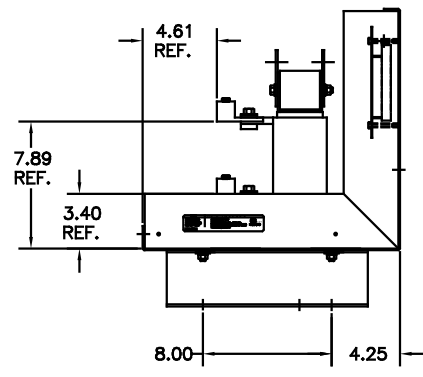
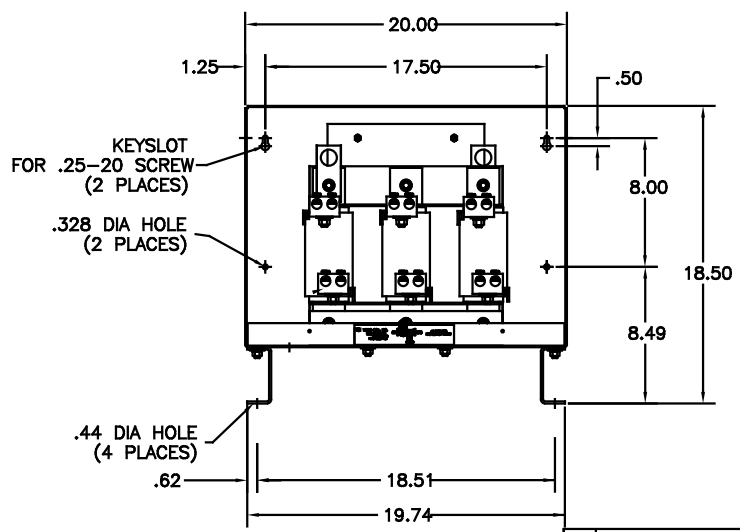
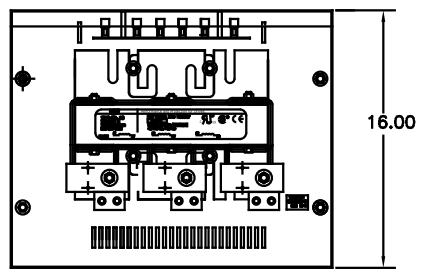
TCI TRANS-COIL, INC.
MILWAUKEE, WISCONSIN
(414) 287-4480
FAX (414) 287-4484

dV/dtGUARD
KLC OUTPUT FILTER

WIRING DIAGRAM



SEE: KLC/KLCUL INSTALLATION GUIDE.
TCI# 25389



NOTE: CABINET
MATERIAL:
BASE: #12GA STEEL
MOUNTING LEGS: #12GA STEEL
FINISH: COLOR, BEIGE.

CUSTOMER IS RESPONSIBLE FOR INSTALLATION
TO MEET ALL NATIONAL AND LOCAL ELECTRICAL
CODES

F	2455 UPDATE SCHEM	10/04/06	DSW	TOLERANCES (EXCEPT AS NOTED)
E	2413, REMOVE GRD.	2/15/06	DSW	DECIMAL
D	2326 UPDATE BOARD	07/27/05	DSW	.XX ±.03
C	2250, CORRECT WEIGHT	08/28/03	DSW	.XXX±.01
B	2233, LABEL UPDATE	05/01/06	DSW	FRACTIONAL ± 1/32
A	#2066 LABEL CHANGE	12/5/2000	DSW	ANGULAR ± 1/2°
NO	REVISION	DATE	BY	

TCI 7878 N. 86th STREET
MILWAUKEE, WI 53224

TCI, KLCUL OPEN OUTPUT
FILTER, 480V, KLCUL600A

DRN. BY DSW DATE 03-30-00 DWG. NO. 101248DG
SCALE 1/8"=1" APPRD. B

SHT. 1 OF 1

CATALOG NO.	KLCUL600A
VOLTS	480
AMPS	600
KLR PART NO.	KLR600BCB
KLR BOARD NO.	24492
APPROX. WT.-LBS	131
LUG WIRE RANGE FOR REACTOR	TWO 600MCM-2, AL. OR CU.
TIGHTENING TORQUE.	500 LB-IN