

PERFORMANCE AND PROTECTION FOR DRIVES.

Trans-Coil, Inc.  
Milwaukee, WI  
www.transcoil.com  
800-324-8282

KLCUL Output Filter  
KLCUL160A  
3PH, 80HZ, 800V Max, 160A Max  
Dwg #: 101234DG Schematic #: 25389  
Enclosure type: OPEN

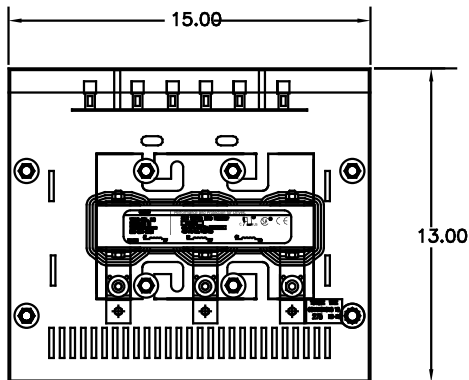
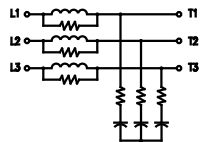
UL LISTED  
CLASS 500E, 508

DATE CODE:

TCI TRANS-COIL, INC.  
MILWAUKEE, WISCONSIN  
(414) 357-4480  
FAX (414) 357-4484

dV/dt GUARD  
KLG OUTPUT FILTER

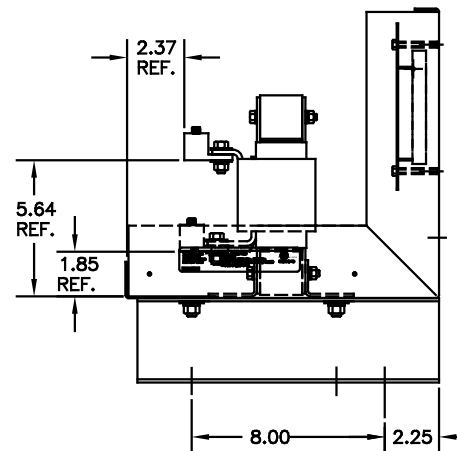
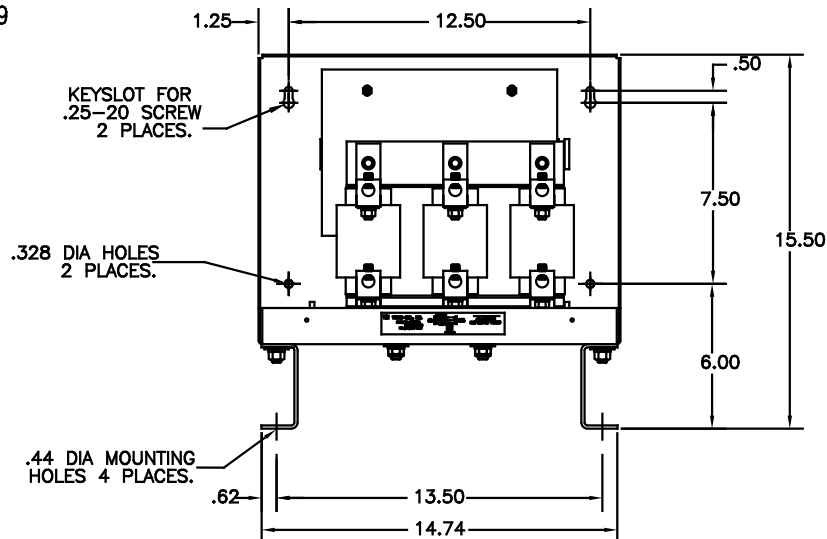
WIRING DIAGRAM



CATALOG NO.	KLCUL160A
VOLTS	480
AMPS	160
KLR PART NO.	KLR160BCB
KLR BOARD NO.	24492
APPROX. WT.-LBS	60
LUG WIRE RANGE FOR REACTOR.	250MCM-6, AL OR CU.
TIGHTENING TORQUE.	275 LB-IN

SEE: KLC/KLCUL INSTALLATION GUIDE.

TCI# 25389



NOTE: CABINET MATERIAL:  
BASE: #12GA STEEL  
MOUNTING LEGS: #12GA STEEL  
FINISH: COLOR, BEIGE.

F	2455 UPDATE SCHEM	10/04/06	DSW	TOLERANCES (EXCEPT AS NOTED)	<p>7878 N. 86th STREET MILWAUKEE, WI 53224</p> <p>TCI, KLCUL OPEN OUTPUT FILTER, 480 V. KLCUL160A</p>												
E	2413, REMOVE GRD.	2/15/06	DSW	DECIMAL													
D	2326 UPDATE BOARD	07/25/05	DSW	.XX ±.03													
C	2250 CORRECT WEIGHT	08/28/03	DSW	.XXX±.01													
B	2233, LABEL UPDATE	05/01/05	DSW	FRACTIONAL ± 1/32													
A	#2066, LABEL UPDATE	11/29/2000	DSW	ANGULAR ± 1/2°	<table border="1"> <tr> <td>DRN BY</td> <td>DSW</td> <td>DATE</td> <td>03/17/00</td> <td>DWG. NO.</td> <td>101234DG</td> </tr> <tr> <td>SCALE</td> <td>3/16"=1"</td> <td>APP'D.</td> <td></td> <td></td> <td>B</td> </tr> </table>	DRN BY	DSW	DATE	03/17/00	DWG. NO.	101234DG	SCALE	3/16"=1"	APP'D.			B
DRN BY	DSW	DATE	03/17/00	DWG. NO.	101234DG												
SCALE	3/16"=1"	APP'D.			B												
NO	REVISION	DATE	BY		SHT. 1 OF 1												