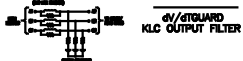


DSW PERFORMANCE AND PROTECTION FOR DRIVES.
 Trans-Coil, Inc.
 Milwaukee, WI
 www.transcoil.com
 800-527-5282

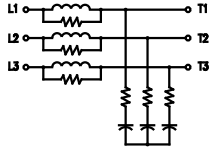
KLCUL Output Filter
 KLCUL130A
 3PH, 80HZ, 600V Max, 130A Max
 Dwg # 101232DG Submodel # 25389
 Enclosure Type: OPH



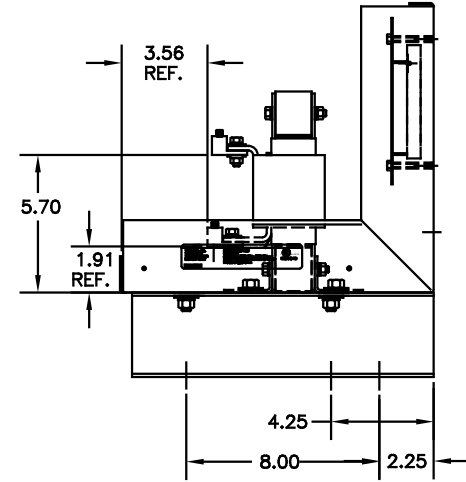
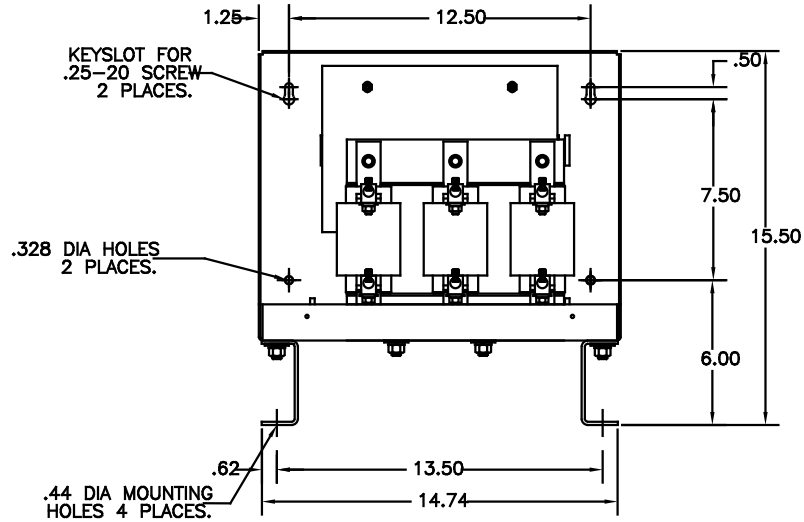
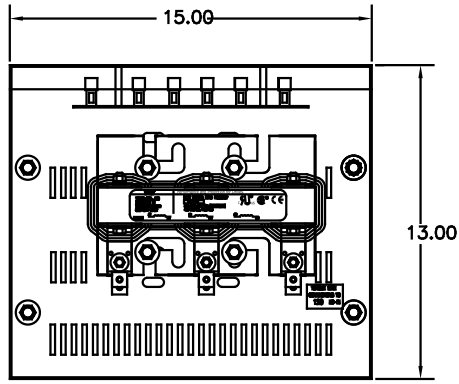
TCI TRANS-COIL, INC.
 MILWAUKEE, WISCONSIN
 (414) 387-4488
 FAX (414) 387-4489



WIRING DIAGRAM



SEE: KLC/KLCUL INSTALLATION GUIDE.
TCI# 25389



NOTE: CABINET MATERIAL:
BASE: #12GA STEEL
MOUNTING LEGS: #12GA STEEL
FINISH: COLOR, BEIGE.

CUSTOMER IS RESPONSIBLE FOR INSTALLATION TO MEET ALL NATIONAL AND LOCAL ELECTRICAL CODES

F	2455 UPDATE SCHEM	10/04/06	DSW	TOLERANCES (EXCEPT AS NOTED)
E	2413, REMOVE GRD.	2/15/06	DSW	DECIMAL
D	2326 UPDATE BOARD	07/25/05	DSW	.XX ±.03
C	2250 CORRECT WEIGHT	08/28/03	DSW	.XXX±.01
B	2233, LABEL UPDATE	5/1/03	DSW	FRACTIONAL ± 1/32
A	# 2066, LABEL CHANGE	11/28/200	DSW	ANGULAR ± 1/2°
NO	REVISION	DATE	BY	



7878 N. 86th STREET
MILWAUKEE, WI 53224

TCI, KLCUL OPEN OUTPUT FILTER, 480 V. KLCUL130A

DRN BY	DSW	DATE	03/17/00	DWG. NO.	B 101232DG
SCALE	3/16"=1"	APPRD.			SHT. 1 OF 1