

Trans-Coil, Inc.  
Milwaukee, WI  
www.transcoil.com  
800-824-8282

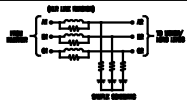
PERFORMANCE AND PROTECTION FOR DRIVES.

KLCUL Output Filter  
KLCUL110A  
3PH, 60HZ, 600V Max, 110A Max  
Dwg #: 101230DG Schematic #: 25389  
Enclosure type: OPEN



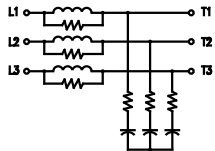
DATE CODE

TCI TRANS-COIL, INC.  
MILWAUKEE, WISCONSIN  
(414) 357-4480  
FAX (414) 357-4484

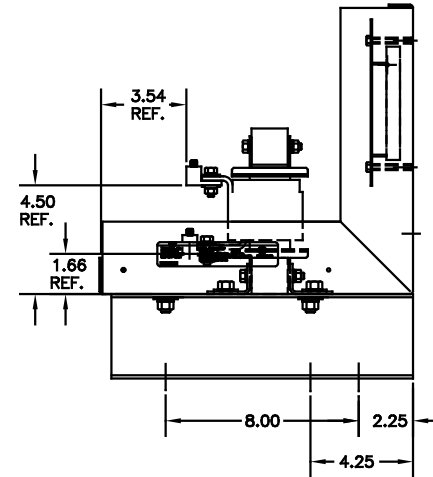
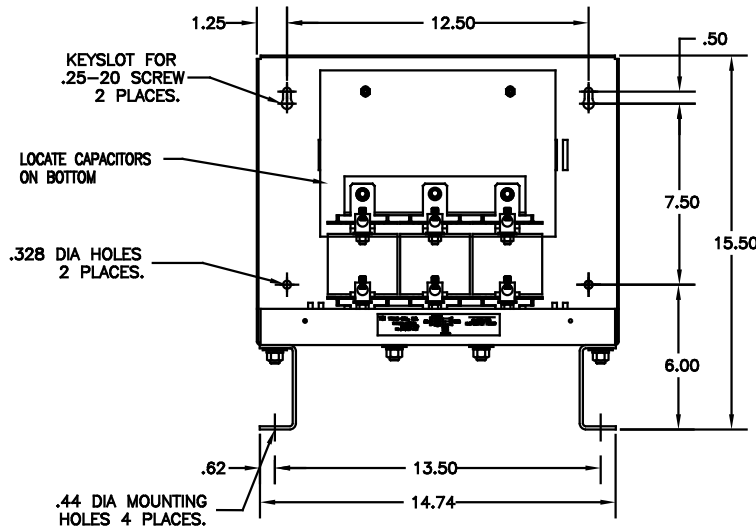
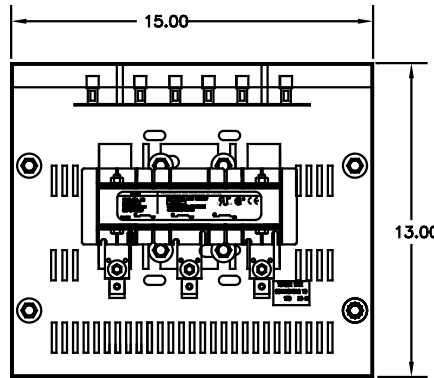


dV/dtGUARD  
KLC OUTPUT FILTER

WIRING DIAGRAM



SEE: KLC/KLCUL INSTALLATION GUIDE.  
TCI# 25389



NOTE: CABINET  
MATERIAL:  
BASE: #12GA STEEL  
MOUNTING LEGS: #12GA STEEL  
FINISH: COLOR, BEIGE.

CATALOG NO.	KLCUL110A
VOLTS	480
AMPS	110
KLR PART NO.	KLR110BCB
KLR BOARD NO.	24492
APPROX. WT.-LBS	46
LUG WIRE RANGE FOR REACTOR.	2/0-6, AL OR CU.
TIGHTENING TORQUE.	120 LB-IN

CUSTOMER IS RESPONSIBLE FOR INSTALLATION  
TO MEET ALL NATIONAL AND LOCAL ELECTRICAL  
CODES

F	UPDATE SCHEM	10/04/06	DSW	TOLERANCES (EXCEPT AS NOTED)	<b>TCI</b> 7878 N. 86th STREET MILWAUKEE, WI 53224
E	2413, REMOVE GRD	2/15/06	DSW	DECIMAL	
D	2326 UPDATE BOARD	07/25/05	DSW	.XX ±.03	TCI, KLCUL OPEN OUTPUT FILTER, 480 V. KLCUL110A
C	2250 CORRECT WEIGHT	08/28/03	DSW	.XXX±.01	
B	2233, LABEL UPDATE	04/30/03	DSW	FRACTIONAL ± 1/32	DRN BY DSW DATE 03/17/00 DWG. NO. B 101230DG
A	#2066 LABEL CHANGE	11/28/200	DSW	ANGULAR ± 1/2°	SCALE 3/16"=1" APPRD.
NO	REVISION	DATE	BY		SHT. 1 OF 1